

PROFESSIONAL DEMOLITION AMERICA

Your Gateway to North, Central and South America

Volume 11 • Issue 4
December 23 - January 24

Reports

VTN Celebrates
Golden Anniversary
page 18

Feature

New Demolition Robots
page 15

Feature

Get a Load(er) of These
page 34

Site Report

Selective Deconstruction
in the City Center
page 49

Site Report

Best Results in Floor
Grinding and Prep
page 52

Reports

Montabert USA's

French Revolution

page 14

Associations

NDA Announces First Class
of Certified Demolition Supervisors
page 8

News

Epiroc Celebrates
Hydraulic Breaker's
60th Anniversary
page 20

News

What's New With
Demolition Robots?
page 24

News

Aquajet Launches Revojet 270
page 28

News

What's the Impression of
Pentrunder's MDU3?
page 48

Reports

Meet the New Von Arx
page 12



OUR KIND OF PLAYGROUND

This is the natural habitat for Brokk's compact giants. With the perfect combination of power, operability and accessibility our demolition robots provide efficient solutions to increase profits.

SEE US AT



Professional Demolition Americas Magazine

Postal address:
Riverbends Publishing, LLC, Pda Magazine,
P.O. Box 552, Nokesville, VA 20182, USA

Phone:
+1 703 392 0150

E-mail Editorial Office:
editorial@pdamericas.com

Web Site:
www.pdamerica.com

ISSN Registration:
ISSN 1650-979X

EDITORIAL STAFF
Senior Editor:
Jim Parsons
jim.parsons@pdamericas.com

Editor-in-Chief:
Jan Hermansson
jan.hermansson@pdamericas.com

Assisting Editor-in-Chief
Anita do Rocio Hermansson
anita.hermansson@pdamericas.com

Editor North America: Jim Parsons
jim.parsons@pdamericas.com

Editor South America: Luiz Carlos Beraldo
luizcarlosberaldo@gmail.com

Editors Europe: André Hermansson
andre@pdworld.com

Vitor Hermansson
vitor@pdworld.com

CORRESPONDENTS
Andrei Bushmarin
andrei.bushmarin@pdamericas.com

Mikael Karlsson
mikael.karlsson@pdworld.com

SALES
Sales Director North & America
Andrei Bushmarin
Phone: +7 921 949 27 81
andrei.bushmarin@pdamericas.com

Sales Director North America
André Hermansson
Phone: +46 70 979 04 03
andre@pdworld.com

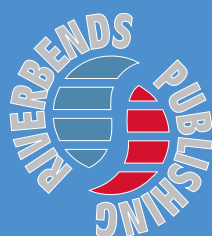
Sales South America
Eduardo Kubrick
Phone: +55 11 999494544
eduardo.kubrick@pdamericas.com

Sales Europe and rest of the world
Phone: +46 8 585 700 46
sales@pdamericas.com

Publisher
Jan Hermansson

Cover Picture:
Pentrunder MDU3.

The magazine Pda, Professional Demolition Americas is published four times per year in North and South America. The annual airmail subscription rate is US\$ 46. All subscription correspondence should be directed to: The subscription department, Riverbends Publishing, LLC, P.O. Box 552, Nokesville, VA 20182, USA. Or sent by e-mail to info@pdamericas.com. Pda is mailed by second class postage. © Copyright Riverbends Publishing, LLC, 2013-2023.



Contents

PROFESSIONAL DEMOLITION AMERICAS

Your Gateway to North, Central and South America

4	<i>Editorial</i> Progress Through Perseverance (And Vice Versa)	11	<i>News</i> Finding Your Comfort Zone Navigating Modern Compact Track Loader and Skid Steer Comfort Features	54	<i>News</i> Antraquip Attachments Help Rehabilitate a New York Canal Lock
6	<i>Associations</i> Growth, Certification, and Advocacy	20	Epiroc Celebrates Hydraulic Breaker's 60th Anniversary		Epiroc to Acquire Black and Decker's Stanley Infrastructure
6	<i>Business</i> Aquajet Hires Application Specialist	21	Recycling is Like Magic	12	<i>Reports</i> Meet the New Von Arx
	Quam Joins Brokk as Parts Manager	24	Scanning for Rebar in Concrete When It's "Everywhere"	14	French Revolution
8	Events Calendar	28	What's New with Demolition Robots?	18	VTN Celebrates Golden Anniversary
	NDA Announces First Class of Certified Demolition Supervisors	40	Aquajet Launches Revojet 270	40	Second Edition of Demtech in India a Complete Success
	JCB Plans New Texas Manufacturing Facility	44	Rotar Celebrates Win at World Demolition Awards	22	<i>Shows</i> World of Concrete Celebrates 50th Anniversary
	Volvo CE Dealer Rudd Equipment Acquired by Ferronordic		ASV Bolsters Attachment Lineup	25	<i>Feature</i> New Demolition Robots
	Tyrolit Acquires Acme Abrasives		Atlas Copco ZBC Energy Storage System Runs Emission-Free Construction Site in Norway	34	Get a Load(er) of these
10	Volvo Construction Equipment Sets Up New Compact Business Unit		Caterpillar to Develop Hydrogen-Hybrid Power Solution for Off-Highway Vehicles	46	<i>Site Report</i> An Unprecedented Hydrodemolition Project
	Lehnhoff at Komatsu Demo Days	45	New Material Handlers from Develon	48	Pentrunder MDU3 in the Field: What's the Impression?
	Volvo CE Celebrates DD25 Electric Compactor and New Training Facility		Jetstream of Houston Offers Next Generation of Pump Design	49	Selective Deconstruction in the City Center
	Leverage the Knowledge of Others to Enhance Strategy and Inspiration	54	A Power Duo for Aerated Concrete Planar Elements	51	Diamond Products PC1505XL Grinder and Groover Clears a Runway for Takeoff
11	<i>News</i> Makinex Launches Portable Power Box		Yanmar Celebrates 30 Years of Zero Tail Swing Excavators	52	Best Results in Floor Grinding and Prep

Progress Through Perseverance (And Vice Versa)

As I write this column in the closing weeks of 2023, Rolling Stone guitarist Keith Richards is defying generations of comedians (and perhaps himself) by celebrating his 80th birthday. Quite a feat for someone who, whether accurately or not, came to epitomize rock n' roll excess of the 60s and 70s.

Now, Richards does admit to experiencing arthritis from time to time, and in recent years has ditched many of the vices that contributed to the premature departure of so many of his peers. Nevertheless, Richards has managed to keep on a'rockin' with his fellow octogenarian mate Mick Jagger and Ronnie Wood, the Stones' relative youngster at age 76.

Call it what you will—a marvel, a miracle, or just plain luck—the fact that Richards and so many others of that generation (a song written by now-78-year-old Pete Townsend) shouldn't really be surprising. Both the concept and actual experience of aging has changed a great deal over the past half-century. The advent of healthier diets and lifestyles has surely played a part, but so too has our approach to and attitude about getting older.

Time was when someone hit age 65 (as I did in 2023), it'd be time to quit work and do what retired people do. No questions asked. But more people (again, me included) see 65 as just another birthday, and like Keith Richards, we just keep going (despite sore knees and increasingly thicker glasses). For some, of course, it's a matter of financial necessity. For others (hand still raised), we simply enjoy doing what we're doing and there's no real reason to stop. I guess that's peak Baby Boomer—we want to have our way, just as our parents assured us would happen thanks to their having taken care of all those nasty things in World War II.

If there's a downside to our desire to keep on keepin' on, it's an inherent assumption that our times and the way we do things are better. Yes, there is comfort in familiar habits and experiences, and I weep at the thought that today's Zoomers may never appreciate the value of reading a good newspaper or experience counting the days before they get a learner's permit for driving a car. Even how we look at aging is different now.

But times do and, indeed, must change. After all, it's changes on multiple technology fronts that have made it possible for us to perform our work more efficiently, to find answers in seconds rather than set aside time for trips to the library, and, yes, to live longer so we can complain about changes that we don't like. Watch any old movie or TV show, and people in their 50s are looking rather elderly. Even 40-something characters may have gray streaks in their hair—assuming they still have any.

Billy Joel (age 74) once wrote, "the good old days weren't always that good, and tomorrow's not as bad as it seems." To be sure, age should be respected. But a lot of us poo-poo'd what our parents and other "grown-ups" said back in the day. Rather than judge and criticize, let's see what the evolving change will bring and, assuming we have the energy, do our parts to make sure the positives leave us little to complain about. There have to be other reasons to make all those noises associated with getting up in the morning, right?

Jim Parsons, Senior Editor
jim.parsons@pdamericas.com



EXHIBITS: JANUARY 23-25, 2024

EDUCATION: JANUARY 22-25

LAS VEGAS CONVENTION CENTER



WHERE LEGENDS ARE MADE



As the industry's No.1 authority, we've stayed true to our mission to support the needs of concrete and masonry professionals. Today, we're working just as hard to deliver opportunities and strategic connections as we did on day one. Join us to see, touch and test state-of-the-art solutions that drive informed decisions and put your business on solid ground for the year ahead.

BUILD A LEGACY OF SUCCESS.



LEARN MORE
ABOUT WOC



VIEW
INTERNATIONAL
EVENTS

REGISTER NOW at worldofconcrete.com





PDa Magazine is pleased to present regular updates from the US National Demolition Association. This column comes from NDA Executive Director Jeff Lambert.

Growth, Certification, and Advocacy

As we begin a new year, I'm excited to share some updates on the NDA's progress and priorities. The last few months of 2023 were quite busy, filled with milestones achieved and exciting initiatives launched.

Member Growth. Our commitment to expanding our reach and amplifying the voice of the demolition industry is paying off. We've identified nearly 2,300 potential member companies, representing 14,000 contacts across demolition, abatement, and scrap recycling sectors. Since launching our targeted campaign in this year, we've welcomed 35 new members. We anticipate a surge in new members and renewals in January and February, as many companies wait until their new fiscal year to make such decisions. We're confident in achieving our goal of doubling our member in the next three years. Our ranks grow stronger every day!

Certification. The NDA's commitment to professional development is taking shape. The Certification Board established the cut score for the Certified Demolition Supervisor (CDS) beta exam, and we were thrilled to announce the first class of CDS designees in December. Twenty-seven individuals will be recognized for their accomplishment at Demolition San Antonio. This landmark achievement signifies a new era of competency recognition in our field.

To be sure you don't miss out on the next window to register for the CDS exam, check our website (www.demolitionassociation.com). We're also gearing up for the development of the entry-level Certified Demolition Technician (CDT) certification. This initiative aligns perfectly with our strategic goals of workforce development and safety.

Safety. The Starting Out Right video series is finally here! These 17 short, engaging videos will be invaluable tools for onboarding new hires and reinforcing key safety concepts. A huge thank-you to John Satterwhite and the dedicated Safety Committee members for their tireless efforts on this two-year project.

Advocacy. We're actively representing your interests on Capitol Hill. In December, the NDA submitted comments to the House Committee on Education and the Workforce regarding proposed changes to the Fair Labor Standards Act (FLSA) regulations. We firmly believe in overtime flexibility that benefits both employers and employees.

Happy Birthday NDA! This year marks our 50th anniversary. And what better way to celebrate than joining your industry colleagues at Demolition San Antonio in March. It will be a convention to remember. I'm brimming with optimism for NDA's future this year, and beyond. We're growing, upskilling our workforce, advocating for your best interests, and building a safer, more prosperous demolition industry.

Thank you for your continued membership and support. If you are not a member, join our ranks. Together, we'll make 2024 a year of even greater achievements.

Jeff Lambert
Executive Director
www.demolitionassociation.org

Aquajet Hires Application Specialist

Brian Gaede, Aquajet's new application specialist will aid Aquajet customers throughout North America by providing on best practices in a variety of applications and providing sales, technical, and customer service support. Gaede joined the hydrodemolition industry early in his career at Midwest Mobile Waterjet, St. Paul, Minnesota. He started as an operator, working with equipment from multiple manufacturers, and later added project management and safety officer responsibilities. Over the course of his 12-year career, he has trained staff on proper safety practices, equipment maintenance and Hydrodemolition techniques in various applications. His hydrodemolition experience will be valuable to new and existing Aquajet customers looking to maximize the potential of their equipment.

"I'm ecstatic to relay what I've learned over the years to help Aquajet customers complete hydrodemolition projects as safely and efficiently as possible," Gaede says. "Hydrodemolition will continue to be more widely incorporated across a range of applications. It's crucial to have adequate manufacturer support from the introductory handshake until the work is complete. I'm excited to ensure Aquajet equipment runs optimally each step of the way."

www.aquajet.se



Bobcat Plans New Manufacturing Facility in Monterrey, Mexico

Doosan Bobcat will build a new manufacturing facility in Monterrey, Mexico, anticipated to begin production by early 2026. The investment, planned for nearly US\$320 million, will expand Bobcat's existing global footprint to create additional production capacity and manufacturing capabilities for selected compact track and skid-steer loader models. The new facility is expected to create an additional 750 jobs in the region.

"As a global company with manufacturing facilities, offices, dealerships and customers across the globe, we have seen tremendous growth and increased demand for our products," says Scott Park, Doosan Bobcat CEO. "We are excited to continue



growing our footprint to meet demand for Bobcat solutions worldwide."

The 721,100-ft² (67,000m²) manufacturing facility is expected to increase Bobcat's North American compact loader production capacity by 20%. The facility will feature areas for welding, painting and assembly, as well as an on-site warehouse and office space. Bobcat will implement state-of-the-art technology with an emphasis on quality, precision and energy efficiency. The Monterrey location will manufacture compact loaders for North American distribution. Bobcat has additional locations across its global footprint that also produce compact loaders.



Quam Joins Brokk as Parts Manager

Dan Quam has joined Brokk, Inc., as parts manager for the company's Monroe, Wash., warehouse. His responsibilities include managing the parts department and overseeing, receiving and purchasing spare parts for both Brokk and Aquajet products in North America. Quam will work with the Brokk team, including Warehouse Manager Noah Acree and Assistant Warehouse Manager Brodie Kohn, to help ensure Brokk delivers on its promise of same-day shipping on all common parts.

Quam previously spent more than three decades with Mi Fluid Power Solutions, a hydraulic/pneumatic parts distributor. He worked his way up from the warehouse and learned all aspects of the business from customer service and purchasing to branch management. In his most recent position in outside sales, he regularly worked with Brokk and gained a deep knowledge of the Brokk and Aquajet brands.

The parts warehouse Quam manages houses an array of standard and specialty parts for all Brokk models as well as parts and accessories for Hydrodemolition robots. This warehouse works in conjunction with Brokk's service centers in St. Joseph, Mo., and Stanhope, N.J., to provide fast, reliable support for customers across North America.

www.brokk.com

AQUAJET

MEET THE NEW AQUA CUTTER 750V

Aqua Cutter 750V is our new "Mean Machine" with breakthrough technology in performance and efficiency. The new patented Infinity system together with the next generation Evolution control system brings out the best possible results from the machine, making you and your new robot an unbeatable team.



WATCH VIDEO >>



Distributed by: **Brokk Inc. | Monroe, WA | 1-360-794-1277 | info@brokkinc.com | www.brokk.com**

GROOVER & GRINDER

Ideal for the surface treatment of roads and airport runways

- + 426 kW / 575 PS + CE certified
- + Grinding shaft speed: 1.315 RPM - 1.900 RPM
- + Grinding width: 127 cm

A cooperation of Diamond Products, TYROLIT and LISSMAC.

LISSMAC

CONSTRUCTION TECHNOLOGY



Now available in Europe!

LISSMAC Maschinenbau GmbH
www.lissmac.com



Event Calendar

WORLD OF CONCRETE 2024

January 23-24, 2024
Las Vegas Convention Center,
Las Vegas, USA

www.worldofconcrete.com

DEMOLITION SAN ANTONIO 2024

US National Demolition
Association Convention 2024
March 6-9, 2024
Grand Hyatt San Antonio
Riverwalk
San Antonio, TX

www.demolitionassociation.org

CANADIAN CONCRETE EXPO 2024

February 14-15, 2024
The International Centre
Toronto, Canada

www.canadianconcreteexpo.com

THE ARA RENTAL SHOW 2024

February 19-21, 2024
Ernest N. Memorial
Convention Center,
New Orleans, USA

www.arashow.org

ISRI 2024

April 15-18, 2024
Mandalay Bay Hotel, Casino
and Convention Center
Las Vegas, USA

www.isri.org

GIC EXPO 2024

April 18-20, 2024
Piacenza Exhibition Center,
Piacenza, Italy

www.gic-expo.it

INTERMAT 2024

April 24-27, 2024
Villepinte, Paris Nord,
France

www.intermat.fr

DEMCON 2024

September 19-20, 2024
InfraCity, Stockholm,
Sweden

www.demcon.se

BAUMA CHINA 2024

November 26-29, 2024
Shanghai Exhibition Center,
Shanghai, China

www.bauma-china.com

NDA Announces First Class of Certified Demolition Supervisors

The National Demolition Association today announced the first 27 individuals to earn the new Certified Demolition Supervisor (CDS) certification. The new certifications will allow these individuals to demonstrate their expertise in demolition and provide them and their companies with a competitive edge in the job market. NDA had 47 individuals participate in the beta test pass/fail exam.

"We are proud to recognize these individuals for their commitment to professional development," said James Milburn, the 2023 president of the NDA. "Earning a certification from NDA demonstrates that these individuals have the knowledge and skills necessary to succeed in today's demanding workplace."

"The CDS certification allows demolition professionals to elevate themselves, their employers, and the demolition industry as a whole by formalizing our minimum requirements to be considered a competent and professional demolition supervisor."

"Congratulations to our first class of Certified Demolition Supervisors. You have earned the respect of your peers in the industry," said Peter Banks, Chair, Certification Board of the NDA, TRM Demolition.

NDA congratulates the following individuals on obtaining the certification:

- Nicholas D. McGarel, Brandenburg Industrial Service Company
- Jay A. Jasinowski, Brandenburg Industrial Service Company
- Brad Adkins, D. H. Griffin Wrecking Company, Inc.
- Ryan Kornder, D. H. Griffin Wrecking Company, Inc.
- Spencer Clark, D. H. Griffin Wrecking Company, Inc.
- Alex Adams, Dickson Company
- Austin Deleon, Dickson Company
- Chris Drea, Dickson Company
- Corey Watson, Dickson Company
- Jess Denatale, Dickson Company
- Andrew M. Collova, Frattalone Companies
- Robert D. Robbs, Hayden Wrecking
- Austin E. Straub, Homrich
- Cody J. Manor, Homrich
- Joseph C. Hopewell, JR Ramon Demolition
- Joseph Ramon, JR Ramon Demolition
- Ryan Medlin, JR Ramon Demolition
- Daniel R. Skinner, Sessler Wrecking
- Kevin C. Sessler, Sessler Wrecking
- Howard Carpenter, Sessler Wrecking
- Nicholas Sessler, Sessler Wrecking
- Juan Gradilla, Milburn Demolition
- Rogelio Tapia, Milburn Demolition
- Michael A. Rutt, Remedial Construction Services L.P.
- Anthony Hiel, Terra Technical Services, LLC
- Gerald Thompson, Terra Technical Services, LLC
- Greg Menen, FERMA CORPORATION

NDA's CDS certification recognizes individuals who have demonstrated competence in all aspects of demolition, including safety, environmental, operations, and people management. This designation promotes safe and quality practice through its ongoing requirements for professional growth in the demolition industry. Testing and application window open now through December 8. NDA encourages demolition contractors to consider employee applications to take an upcoming exam.

demolitionassociation.org

JCB Plans New Texas Manufacturing Facility

JCB is set to expand its North American manufacturing operations with a new 720,000 ft² (m²) factory will begin early next year on a 400-acre site in San Antonio, Texas. Complementing JCB North America's Savannah, Ga., facility, the new plant will manufacture machines largely in the U.S., Canada, and Mexico. Details of the products to be manufactured at the new plant will be announced at a later date.

"North America is integral to the growth and success of JCB's business in the future and the time is now right for JCB to expand its manufacturing presence there," says Graeme Macdonald, JCB CEO. "Texas is a vibrant and growing economy, and the State offers great advantages in terms of a central location, as well as good highway and port access. The city of San Antonio also has a well-established skills base, which makes it a very attractive place to set up a factory."

"The growth we've experienced in the past few years in North America has been extensive and demand for our products continues to grow," adds Richard Fox-Marrs, President & CEO for JCB North America. "The decision to expand our manufacturing footprint will bring us even closer to our customers and will allow us to further capitalize on market opportunities in North America."

JCB has 22 factories around the world, with locations in the United Kingdom, India, Brazil, and China. The company will mark its 80th anniversary in 2025.

www.jcb.com

Volvo CE Dealer Rudd Equipment Acquired by Ferronordic

Ferronordic, an established European-based dealer for Volvo Construction Equipment, Volvo Trucks, and Renault Trucks, is entering the US market with the acquisition of Louisville, Ky.-based Rudd Equipment. The transaction closed on November 30, 2023. With more than 360 employees across 13 locations, Rudd Equipment is the exclusive Volvo CE dealer for the entire states of Kentucky and Ohio, and most of Indiana. Their territory

also includes parts of Missouri, Illinois, West Virginia, Pennsylvania, Tennessee, and Maryland. Ferronordic will continue to offer the full range of Volvo products and solutions under the Rudd Equipment banner.

"This is a transformational transaction for us," says Ferronordic CEO Lars Corneliusson. "We have been looking for opportunities to expand geographically in other regions, mainly in developed markets. Rudd is a good strategic fit for Ferronordic and provides the platform and scale we have been looking for in the US. The acquisition gives us a strong base in a dynamic market that opens potential for further growth in North America."

Rudd Equipment was founded in Louisville in 1952 by Mason Rudd. In 1975, his son Mike, joined the company and over the next 48 years focused on expanding its footprint into neighboring states. Ferronordic does not foresee any major changes to the current organization of Rudd Equipment, with Mike Rudd continuing with the company for an indefinite period.



Tyrolit Acquires Acme Abrasives

At the end of September 2023, the Tyrolit Group acquired Acme Abrasives, a specialized abrasives manufacturer and provider based in Michigan. Acme Abrasives is one of the leading manufacturers in North America for hot pressed grinding wheels. As Tyrolit's seventh manufacturing plant in the US, the acquisition is a strategic move that will further expand the company's product portfolio for the steel and foundry as well as the rail industry. Tyrolit will integrate Acme wheels in its portfolio of grinding and specialty abrasive solutions for industrial clients.

"We have built a successful global economic base that allows us to further pursue our strategic direction of business activities," says Tyrolit CEO Thomas Friess. "The further expansion of our portfolio – especially for crucial industries like steel, foundry, and rail – strengthens our operational competitiveness."

Matthias Kuprian, Tyrolit executive board member for metal industries, notes that the addition of Acme Abrasives enables the company to further utilize its global position.

"Acme has a longstanding commitment to quality and efficiency and therefore perfectly aligns with our values," Kuprian says. "We are excited about the opportunity to serve our partners even better and offer high-quality products and services for a wide variety of specific needs."

www.tyrolit.com

Where Demolition Professionals Build Relationships

The National Demolition Association is your source for success in the demolition industry.

- Industry Networking
- News and Regulatory Updates
- Safety Training
- Best Practices and Standards

JOIN TODAY!
[demolitionassociation.com/
 membership](https://demolitionassociation.com/membership)



Tyrolit Strengthens US Market Position With Acquisition of Acme Abrasives

At the end of September 2023, the Tyrolit Group acquired Acme Abrasives, a specialized abrasives manufacturer and provider based in Michigan.

Acme Abrasives is one of the leading manufacturers in North America for hot pressed grinding wheels. As Tyrolit's seventh manufacturing plant in the US, the acquisition is a strategic move that will further expand the company's product portfolio for the steel and foundry as well as the rail industry. Tyrolit will integrate Acme wheels in its portfolio of grinding and specialty abrasive solutions for industrial clients.

"We have built a successful global economic base that allows us to further pursue our strategic direction of business activities," says Tyrolit CEO Thomas Friess. "The further expansion of our portfolio – especially for crucial industries like steel, foundry, and rail – strengthens our operational competitiveness."

Matthias Kuprian, Tyrolit executive board member for metal industries, notes that the addition of Acme Abrasives enables the company to further utilize its global position.

"Acme has a longstanding commitment to quality and efficiency and therefore perfectly aligns with our values," Kuprian says. "We are excited about the opportunity to serve our partners even better and offer high-quality products and services for a wide variety of specific needs."

www.tyrolit.com

TRP Names Saltzman as Vice President of Sales

Light- and medium-duty trailer manufacturer TRP International recently appointed Ted Saltzman as vice president of sales to lead the company's new business development efforts. This move signals TRP's strategic intent to venture aggressively into the heavy-duty trailer segment while also maintaining its renowned service standards for its existing clientele, including axle manufacturers, boat trailer manufacturers, open and enclosed trailer manufacturers, agricultural implement manufacturers, specialty vehicle manufacturers, and aftermarket component distributors.

TRP is renowned for its depth and breadth of offering in the hub, drum, brake, spindle and leaf spring components for the light- and medium-duty axle space. Its considerable expertise enables TRP to serve the largest axle OEMs in the country, along with trailer manufacturers and the trailer aftermarket distribution channel. Saltzman's

anticipated leadership, combined with the strength of TRP, will help solidify the organization's promising trajectory in the industry, aiming for expansion and deeper customer relations.

Prior to joining TRP, Saltzman held executive sales positions with Hubbard-Hall, a manufacturer of metal finishing chemicals, and Optronics International, a vehicle lighting manufacturer. Over his career, Saltzman has been professionally involved in the Motor & Equipment Manufacturers Association, the Truck Trailer Manufacturers Association and the Intermodal Association of North America.

www.trpintl.com



Volvo Construction Equipment Sets Up New Compact Business Unit

In order to maximize the opportunities in the growing compact equipment segment Volvo Construction Equipment has launched a new Compact Business Operating as an independent entity within Volvo CE, the unit will initially be responsible for compact excavators up to 9t, and compact wheel loaders up to the L50. In addition, the unit will take advantage of the shift to electrification in the compact equipment segment to secure a fully electric line up of productive and sustainable products across the whole compact range.

Volvo CE cites increases population and urbanization that have led to the expansion of the construction sector throughout the globe, with a particularly strong increase in the demand for compact equipment. The segment now represents 50% of the total market, compared to 35% a decade ago, with the growth trend likely to continue.

Thomas Bitter, Volvo CE's Head of Technology, took the helm of the Compact Business Unit in September. He credits the company's pioneering work in electrification and digitalization for positioning Volvo CE as an innovator in compact equipment.

"And now because of compact equipment's ever-growing influence on the market, we are focusing our attention on our compact machine portfolio to provide customers with productive and sustainable products and services," Bitter adds. "The people who join us in this journey will not only develop specialized skills in this important area but be playing an integral role in our wider purpose of building the world we want to live in."

Volvo CE was early in leading the way by making an industry-first move to shift its entire branded compact range over to electric and stop development of new diesel variants, back in 2019.

Lehnhoff at Komatsu Demo Days

For decades, Lehnhoff's quick couplers and attachments for the construction and building machinery industry have been an integral part on German and European construction sites. Now, the German pioneer with more than 200,000 quickcoupler systems sold is crossing the Atlantic to establish itself in the US market as well.

Lehnhoff showed off its capabilities at Komatsu's Demo Days in Cartersville, Ga. The company's SQ series of fully hydraulic quickcouplers impressed visitors with their performance, flexibility, and user-friendliness.

Mounted on the 355 Komatsu PC360 hydraulic excavator, the SQ80V effortlessly changed between hydraulic attachments, such as hammer, grab and pulveriser, as well as the different buckets, such as the Lehnhoff HTL35 or the Lehnhoff HG35 SH, which were also presented.

With a maximum oil flow of 145 gpm (550 lpm) per valve, the full power of the hydraulic attachments can be utilised. Thanks to the symmetrically arranged valve block, even hydraulic attachments can be picked up by 180 degrees, giving users completely new application versatility. And the particularly low-maintenance short-stroke valves make on-site maintenance much easier.

The SQ series' compact, vertical valve system can be used safely and for a long time, especially in tough applications or at narrow angles. The particularly easy maintenance was also impressive during the demonstration. The valves can be replaced in less than two minutes in the case of service.

The concept of the compact, fully hydraulic Lehnhoff quick couplers of the SQ series was enthusiastically received by Demo Days visitors.

Volvo CE Celebrates DD25 Electric Compactor and New Training Facility

Volvo Construction Equipment, in partnership with the Association of Equipment Manufacturers, recently hosted U.S. Representative John Joyce to celebrate the company's first electric asphalt compactor, which was designed and is produced at its Shippensburg, Pa., facility.

The DD25 Electric compactor highlights the equipment manufacturing industry's ongoing commitment to sustainability, encouraging contractors, builders, and operators to build the modern infrastructure needed for a 21st century economy and global marketplace, while reducing their environmental footprint.

Rep. Joyce joined Volvo CE to mark this momentous occasion and noted the positive impact it will have on the local economy in bringing more high-paying jobs to the area.

In honor of the hard work and commitment of Volvo CE's employees in designing and producing this state-of-the-art technology, AEM brought "I Make America," the association's national grassroots campaign, to celebrate the Shippensburg facility's more than 800 employees. "I Make America" partners with member companies in hosting elected officials in facilities across the country and celebrates the grit, dedication, and ingenuity of the equipment manufacturing industry's 2.3 million men and women.

As part of the event, Volvo CE held a ribbon-cutting for the company's new technical training center. Located at the Shippensburg campus, facility will expand the company's capacity and offerings for hands-on training and continuing education through virtual platforms.

Leverage the Knowledge of Others to Enhance Strategy and Inspiration

By John Somers, VP, Construction & Utility Sector, Association of Equipment Manufacturers (AEM)

Everyone has probably heard the saying, "Technology is advancing faster than ever before, and it will never be this slow again."

It's kind of a crazy statement, especially if you take it at face value. But it may not seem as extreme or fast if you're only paying attention to the advancements in your particular industry. What it is, however, is exactly the reason why we all should pay very close attention to what's going on around us and – perhaps more importantly – recognize the value of engaging in cross-industry learning opportunities.

It's no secret the business landscape around us continues to evolve at a rapid pace. With it comes unprecedented challenges and opportunities for organizations as they seek to stay out in front of shifting customer expectations.

One specific way companies are gaining valuable information and insights is by examining what's happening in other industries. Whether it occurs through reviewing successful best practices or adopting fresh perspectives, organizations can leverage the experiences and viewpoints of others to improve strategies and gain new perspectives on innovation.

Consider the farm-to-table movement in agriculture and its emphasis on using locally produced ingredients. Meanwhile, the energy sector is currently exploring something similar, as many utility companies today are looking into decentralized energy generation and distribution. In doing so, utilities can prepare for the reliability and resiliency the future demands, as well as more easily integrated renewable energy generation.

With all that being said, here's what can happen when you start looking outside your own industry to gain insights:

You look further and learn from others. We talk about "silos" internally and how organizations can break them down and foster inter-departmental collaboration. Why not take that a step further and start breaking down the walls that surround our entire industry?

Embracing a more open approach for our industries means typically looking at the on-road industry in order to see what may be on the horizon. Whether it's safety innovations like object detection similar to the parking sensors in your vehicle, or regulations like engine emissions, it's typically impacting on-road vehicles first.

Recently, I was afforded the opportunity to participate in Twistthink's Shared Spaces program, a four-month interactive experience which that together 30 representatives from several different industries, including healthcare, mobility, and industrial. We participated in virtual meetings and learned about multiple different technological advancements and initiatives from each industry. While the presentation portion of each interactive Zoom call focused on one industry, the breakout groups discussed how one trend may affect another and what a challenge in one industry could offer in terms of looking outside the normal field of view and through a different lens.

You develop a learning culture. Organizations would be wise to develop a culture of learning and fully embrace cross-industry inspiration. By encouraging curiosity and exploration, employees can step outside their comfort zones and enter a collaborative environment. With rapid change and constant innovation all around us, businesses cannot (and should not) only engage with their own industries.

I, for one, listen to a lot of real estate and home building podcasts. This may seem like an adjacent industry, but the messages are often more focused on running the business and how to encourage each person to thrive in their role and expand in a market. What it's not about is the actual building process, and it's absolutely fascinating.

www.aem.org



Makinex Launches Portable Power Box

Makinex is adding to its sustainable energy solutions with the launch of its ground-breaking Portable Power Box (PPB).

Global energy consumption is on the rise, impacting the construction industry where energy expenses can exceed five percent of project budgets. With increasing diesel prices, contractors seek alternatives, and the energy-efficient PPB offers a cost-effective easy to use solution.

Makinex's PPB is a blend of efficiency, convenience, portability and durability featuring 6kw of output power combined with up to 15kWh of storage, catering to demanding energy needs. The PPB powers up in just seven hours, boosting on-site efficiency. User-friendly features include a robust frame for easy storage and maneuverability.

Designed for safe use both indoors and outside, the IP44-rated unit provides weather resistance, ensuring reliability and durability for a long operational experience. Other features include compatibility with 240V mains or solar photovoltaic panels, and three 15A and two 5V USB-A outlets.

The PPB has been nominated for the Innovative Product Awards at World of Concrete 2024, a demonstration of its game-changer status.

www.makinex.com



Finding Your Comfort Zone Navigating Modern Compact Track Loader and Skid Steer Comfort Features



Comfort while operating equipment used to be more of an afterthought. That all seems to be changing. Based on a recent survey from a top manufacturer, comfort is the number one factor customers look at today when considering which configuration of a compact track loader or skid steer to purchase. And it doesn't take much contemplation to see why. Manufacturers across the board continue to up the ante with modern comfort features, meaning operators have become accustomed to a certain level of luxury, especially in the last few years. For the construction business owner struggling with employee recruitment and retention, having equipment that is enjoyable to operate could make all the difference in maintaining a strong, reliable crew.

Options for comfort features on modern compact track loaders and skid steers are plentiful. Understanding the options available can help contractors choose the best configurations to maximizing their investment in both comfort and productivity.

Creature Comforts

Inside the cab is where comfort features are most obvious. Most newer models of compact track loaders and skid steers have suspended seats, adding at least a minimal buffer between the operator and the machine's frame. Many manufacturers now offer air ride seats for even better protection for the operator, whether standard or as an option. Some brands take it a step further by adding full adjustability. These innovative sets allow adjusting of recline, slide, weight, and even the four-way arm rest, allowing for a comfortable fit for any body type.

But cab comfort doesn't stop with the seat. The integration of a single-sided lap bar enhances comfort further as opposed to the more cumbersome and restricting overhead lap bar design. A single-sided bar frees up space around the operator's waist and makes entry and exit easier.

Roominess in the cab is primary feature for accommodating multiple operator body types and for comfort during long hours in the cab. While the maximum possible cab space will by necessity be limited by the size class



of the machine itself, some manufacturers use strategic engineering to squeeze in every inch of operator space they can. The resulting cabs make even the smallest sit-in compact track loaders and skid steers far more comfortable than designs where cab roominess was less of a priority.

Visibility and Ergonomics

Ease of operation and visibility play significant roles in operator comfort. Intuitive controls, minimal ergonomic inefficiencies and high visibility can make the operator more productive and less fatigued at the end of the day.

Visibility is one such attribute of a compact track loader or skid steer that can improve operator comfort and safety. More visibility means operators don't have to shift their bodies around as much to get a better view, whether it's of the attachment, proximity to obstructions or other individuals on the jobsite.

Clear visible area is one of the biggest factors of visibility. Some modern compact track loaders and skid steers have floor-to-ceiling visibility, including all-clear sides and frameless doors. These machines rely on advanced engineering, such as high-strength polycarbonate glass and strategic configurations to pull off almost 360-degree visibility while retaining the same level of operator protection as previous designs.



Ride Quality

To work comfortably and effectively for long periods of time, operators must be able to endure the ride. For both skid steers and compact track loaders, ride quality starts from the ground up, and that often means a suspended undercarriage. Suspended undercarriages are becoming more and more popular. But not all suspended undercarriages are the same. One of the most advanced options a contractor could find is known as dual-level suspension, found on some mid- and large-frame compact track loaders. This style of undercarriage features not only the



independent torsions between the undercarriage and the chassis, but also torsions allowing bogie wheels to flex with the track. This configuration keeps more track on the ground, improving operator comfort, traction and machine performance, and keeps more material in the bucket.

Bringing It Home

With so many comfort features and options available on modern skid steers and compact track loaders, it can seem overwhelming for the contractor deciding which machine to bring home. But taking the time to evaluate which features make the most sense for a contractor's business is undoubtedly worth the effort. Elevated productivity, improved employee recruitment and retention, and the simple pleasure of looking forward to starting work in the morning are all available to the contractor willing to navigate the options and invest in the right machine.

www.YanmarCE.com

www.asvi.com

Meet The N

In 2019 he took over the well-known Swiss manufacturer Von Arx. Since then a number of new products and tools for scarifying and shaving has been released. And now Von Arx is rolling out their new line of dust extractors for professional use. Meet Fredrik Åkermark and the new Von Arx.

A product segment that has an extremely strong connection to surface preparation equipment is devices for dust extraction and air cleaning. Machines for scarifying, shaving, grinding or polishing concrete surfaces creates a lot of dust, which is not really good for the environment. Many countries have enacted regulations about how to handle concrete dust, meaning that special dust extraction equipment is required.

It's an area Fredrik Åkermark, owner of Von Arx knows well. He began his career in the 1990s with the Swedish company Bevacelan, which sold Pullman dust extractors in Europe. He went on to enjoy success as the head of Pullman Ermator's operations in the US for a decade before the company was acquired by Husqvarna. Åkermark returned to Sweden and seemed destined to stay with Husqvarna.

But when Swiss scarifiers and shavers manufacturer Von Arx came up for sale in 2019, he couldn't resist the opportunity to acquire the company.

"Von Arx is an old brand that I have come across many times during my years working with dust extraction equipment," Åkermark says.

Following acquisition, Åkermark and his team noticed a growing demand for high-quality dust extractors that could seamlessly complement their scarifiers and shavers. The first effort—the DTF35—debuted at Bauma 2021. The DTF35 is available in both electric and LPG versions with a 33.5-hp (25kW) 480v motor. The cutting width is 13.8 in (35 cm), and the machine can cut up to 1 in (2.5cm) deep. Like all Von Arx self-propelled machines, a hydraulic drive system is used to secure high durability and productivity. Low vibration levels and ergonomic handle design provides comfort and productivity for the operator.

Åkermark shared some insights about Von Arx's new line of dust extractors.

What has driven the development of this line?

Soon after the acquisition of Von Arx in 2019 we learned that our customers wanted to have a reliable, simple, and high-quality dust extractor with our scar-



fiers and shavers. And they wanted to buy them from the same manufacturer, as a package. Due to many other projects, the dust extractors had to stay back but as a professional manufacturer of machines that create dust, it was an obvious decision to do our best to create a good solution for our customers to collect that dust best possible way.

Is there a dust extractor for each Von Arx machine?

Yes, we have five sizes and models of dust extractors sized after each Von Arx scarifier or shaver.

Can you describe your new line of dust extractors?

The dust extractor line is adapted with scarification, shaving, and grinding in mind. For scarifiers, you need high water lift PSI (bar), since the debris is more like gravel and heavy to lift from the floor. And pre-filters with large surface, high air flow CFM for shavers

ew Von Arx

and grinders that produce large amount of finer dust particles. We have found that many vacuum manufacturers put all focus on the use of the vacuum, which is not wrong. But they seem to have forgotten the importance of solutions for when the vacuum is not in use, such as loading, transport, service, and repairs. That's where equipment is most vulnerable.

How have you tested the extractors?

All models have been in field tests for over a year and we have been running them connected to grinders, saws, scarifiers, and shavers. Many times, they have been connected to oversized machines to really push them hard—all with amazing results.

What key features did Von Arx prioritize when designing the dust extractor line?

Our focus has been on creating strong and durable machines that are also simple to operate. Different models were designed to address specific needs, such as high water lift PSI (bar) for effective removal of heavy debris from the floor in the case of scarifiers, and pre-filters with large surface areas and high air flow CFM for efficient collection of finer dust particles generated by shavers and grinders.

How does Von Arx ensure the quality and durability of its dust extractors?

All models are equipped with high-quality two-stage motors that provide excellent air flow and PSI (bar). The extractors feature an efficient semi-automatic filter cleaning system and utilize a dust-free Longopac collection system. They are also designed with robust chassis to withstand rough handling and come with strong, large wheels and casters for enhanced maneuverability. Von Arx's commitment to quality, ensures that our dust extractors can withstand the demands of professional use.

What makes Von Arx dust extractors a trusted choice for contractors?

First Von Arx is a reputable brand known for producing high quality products with operator safety as a top priority. Second, the dust extractors are designed to deliver exceptional performance, with powerful motors and effective dust collection capabilities. And third, Von Arx offers competitive pricing, making the dust extractors an attractive choice for contractors seeking reliable and affordable equipment.

Has Von Arx conducted any independent testing or received feedback from customers regarding the dust extractors?

Yes, independent third-party testing and field testing has been conducted with fantastic feedback from

customers regarding the performance of the dust extractors. The machines have been extensively tested in real world conditions, connected to various equipment such as floor grinders, concrete saws, scarifiers, and shavers. The positive results and feedback received validate the effectiveness and reliability of the dust extractors in capturing dust and debris efficiently.

Any final thoughts about your new role with Von Arx?

Dust extraction equipment is, of course, a little bit where my heart lies. For me, Von Arx high-quality equipment creating dust goes of course hand in hand with my ideas of developing equipment that takes care of the dust efficiently. I am very proud of what we are accomplishing, and I'm lucky to have such fantastic team. Everyone really puts their heart into the work.

www.vonarx.com



FRENCH RE

Montabert USA Brings Famed Demolition Attachment Quality to North America

Montabert USA General Manager Aaron Scarfia wastes no words when asked what distinguishes his company's products.

"We're not the cheapest," he says confidently. "We are the best, and we will last the longest. We build quality products."

It wouldn't be difficult to find users who share Scarfia's opinion. Since its founding in 1921, the French-based company has become widely known for its hydraulic hammers, demolition and drilling equipment—all of which are designed and manufactured for mining, aggregates, demolition, construction, and other applications. In the 1970s, Montabert products made their way to North America through a branding and distribution agreement with Tramac. Montabert subsequently took over US distribution and began marketing the products under its own name.

Deeping its roots in the North American market, Montabert USA was formally established in 2019, followed three years later by the acquisition of Tramac Canada, a move that also included acquisition of the latter's line of crusher-mounted booms.

Scarfia says that market longevity has helped make the Montabert name synonymous with quality.

"For some prospective customers, we still have to explain why Montabert is the best," he says. But for the most part, he adds, "it has not been difficult to shift customers to the Montabert name."

Montabert's pioneering fully variable hydraulic breaker technology has given the company a valuable edge as well, Scarfia adds. Found on the V32, V45, V55, and V65 models, the technology enables the breaker to moderate the frequency and impact force of the blows, based on the harness of the rock. Variable breakers drastically reduce blank firing and the effects of blank firing.

Other companies may offer some form of variability, Scarfia says, "but ours operate at up to 15 speeds or frequencies. No one can duplicate it."



At Conexpo 2022, Montabert USA reintroduced the North American market to its line of silent demolition tools, including grapples, processors, fixed and rotating pulverizers, and scrap

shears. Montabert USA is also the exclusive North American distributor of the Lehnhoff SQ-V fully automatic symmetric Quick Coupler system for 8t to 43t excavators.

EVOLUTION



Core commitment

While all Montabert equipment is manufactured in Saint-Priest, France, "home" for Montabert USA since 2019 has been its 50,000-sq-ft operations facility in Nashville, Ill., which houses product and parts warehousing, distribution, and shipping.

More than 40 dealers distribute the products from 192 locations across the US and Puerto Rico, providing a reach that also includes the Virgin Islands, Cayman Islands, and Bermuda. The latest expansion of the network was announced in September 2023, with the addition of Linder Industrial Machinery, with multiple locations in the southeastern U.S.

While Montabert USA's initiatives have enjoyed success, they have not come without challenges both shared and unique to the manufacturing of construction equipment. The war in Ukraine, for example, has limited access to the high-grade aviation-type steel Montabert uses to build its products.

"Post-COVID demand in the aviation industry had already put us at a disadvantage, as suppliers consider them higher-priority customers," Scarfia explains. "After the steel plant was seized in

Ukraine, every manufacturer in Europe was trying to find a quality steel supply."

But while raw material shortages and higher energy costs have added new supply chain pressures, Scarfia says Montabert absorbed as much of the increases as possible to minimize the impact on our customers.

"It's something that a lot of them have recognized and appreciate," he adds.

Such loyalty is to be expected, given what customers invest in a premium Montabert variable breaker.

"Our customers may pay more up front, but as long as the breaker is properly maintained, it will last a lifetime," Scarfia says. "We see 30-year-old products still at work in the market all the time."

At the same time, he adds, it's important to understand the concerns of cost-conscious contractors. If a customer needs a breaker for a three-year project, for example, Montabert offers affordable gas-fired models that will meet those needs, while also carrying the full Montabert warranty.

Montabert USA's Rebuild Program provides another means for customers to access the com-





ISO 9001:2008
DIN EN ISO
14001:2009
Management
System
www.tuv.com
ID 0091004797



COLLABORATION

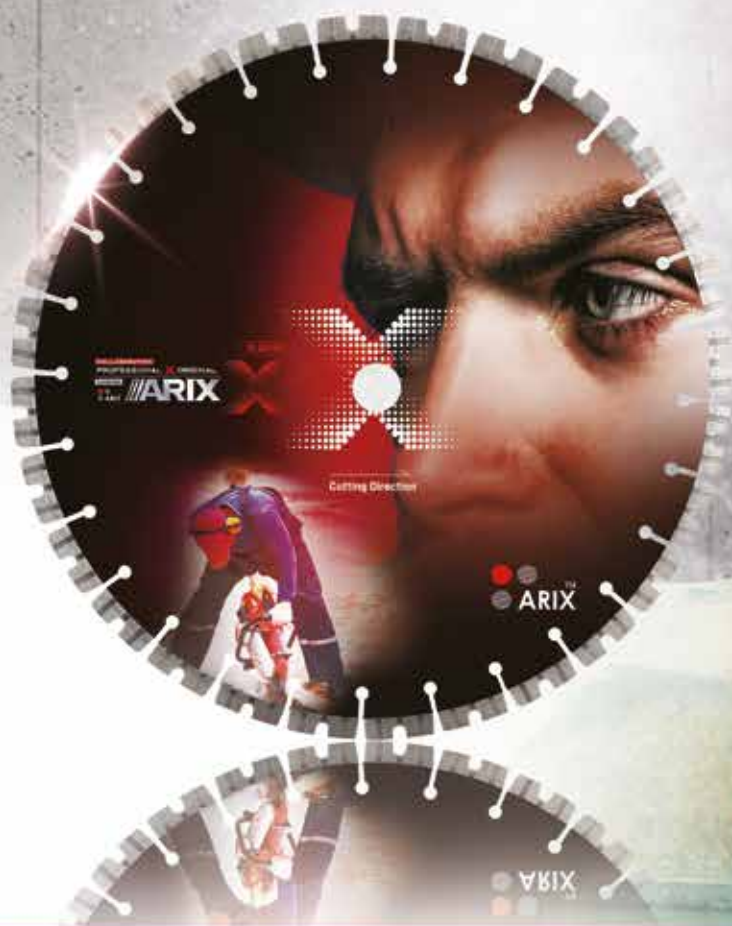
PROFESSIONAL X ORIGINAL

10 SERIES

SHINHAN



ARIX



**SHINHAN
DIAMOND**

Masterpiece
beyond Technology

HEAD OFFICE (Republic Of Korea)

21635, [36B-10L, Namdong Induspark] 375 Namdongdong-ro, Namdong-gu, Incheon,
Republic of Korea

T. +82-1600-4804 | F. +82-32-3414 | en.shinhandia.co.kr



www.arixshinhan.com

pany's famed performance benefits. Scarfia says the company's field representatives are continually on the watch for quality used breaker cores that it can buy back. Most are remanufactured and tested in the Nashville facility, which features an on-site 10-ton crane and a service pit with lift table. A separate remanufacturing operation in Elko, Nevada, opened in 2020, serves the company's western North America customers.

"Customers can buy a remanufactured variable-speed breaker for a fraction of the cost of a new unit, and have the same extended warranty," Scarfia says, adding that the Rebuild Program will eventually be expanded to include drifters and Silent Demolition products.

Breaking new ground

While Montabert products may last forever, at least figuratively, the company is well aware of the dynamics shaping the North American construction market, particularly the scarcity of experienced workers and heightened emphasis on sustainability and environmental protection. Scarfia believes the Lehnhoff Quick Coupler is an ideal way to address these concerns while complementing the many attributes of its other products. For example, the Quick Coupler versatility means contractors need send only a carrier and the needed attachments to a job, reducing and operator



staffing needs.

"From an environmental standpoint, the Lehnhoff Coupler eliminates the risk of dumping hydraulic fluid on the ground every time you change an attachment," Scarfia adds. "The attachment can be switched in one minute, versus an hour with a traditional coupling system, dealing with hydraulic hoses, etc. It's ergonomic, safer, and more productive."

Scarfia says the company continues to eye new additions to its demolition product portfolio. For example, a drum cutter currently in development will have the capability to cut rock, concrete, or hard ground.

But regardless of whatever products the company may develop and offer, Scarfia says Montabert USA is

ready to give prospective customers a firsthand look at their capabilities, wherever they may be.

"We welcome opportunities to hold product demonstrations on a customer's jobsite," he says. "They just need to let us know their application and location, and we will send attachments and personnel for a no-cost demonstration."

These and other efforts, Scarfia adds, are indicative of Montabert USA's fundamental goal, "our commitment to providing the greatest level of customer focus in the industry, combining local expertise and support with globally recognized premium rock breaker and drill attachment products."

www.montabert.com

VTN Celebrates 50th Anniversary

This past June, Italian attachment manufacturer VTN celebrated its 50th anniversary with the slogan “Thinking Out of the Box.” The event included speeches, facility tours, and celebrations honoring the legacy of the family-owned enterprise.

VTN's story began in a small garage in Noventa Vicentina, a small town southwest of Venice. Founder Nerio Vaccaro and a few collaborators started producing buckets on behalf of FAI, an Italian manufacturer of excavators and backhoes which later became Komatsu Italia. By the late 1970s the first exports to France had



begun, and the company was named VTN Benne.

In the late 1980s, VTN crossed paths with what would become its core business when a customer asked VTN to build a grapple—an attachment not produced in Italy at the time. Nerio Vaccaro took up the challenge and created the company's first grapple, soon followed by their first hydraulic crusher. VTN had now set a new direction for itself and consolidated their full commitment to demolition and recycling.

In the 1990s, VTN Europe S.p.A. was established and the production of grapples, hydraulic crushers, and other hydraulic equipment was transferred to nearby Pojana Maggiore.

In 1999, VTN Benne and VTN Europe merged into a single company, and the manufacturing of buckets also moved to Pojana Maggiore. Over the years, VTN Europe has grown into a headquarters with a total area of 129,000 ft² (43,000m²), providing a perfect setting for the 50th anniversary celebration. Attendees included the company owners, numerous employees, collaborators and clients, as well as state officials and Italian and foreign suppliers.

The event began with a letter from the president of the Veneto region, Luca Zaia, congratulating VTN on reaching the milestone of 50 years. Doris Lunardi, VTN's president and Vaccaro's widow, recalled how her family imagined reaching such a milestone when they started out.

“With Nerio's determination, we began an adventure that we pursued together, facing numerous challenges due to limited resources, financial difficulties, and economic crises that often put us in difficult situations,” she said.

Lunardi then went on to acknowledge the contributions of collaborators through the journey; a journey which has also included the involvement of their children Matteo, Antonio, and Elisa in managing the company.

Paola Fortuna, mayor of Pojana and a teacher at ITC Masotto in Noventa, recalled how VTN was among the first companies to believe in the early



VTN president Doris Lunardi thanks the guests at the company's 50th anniversary.



VTN owners and state officials up on the stage at the main plant.

experiments of schoolwork alternation. Visitors were then welcomed to an exclusive tour into the production facilities for tours were led by VTN staff, who explained the various stages of production. The evening concluded with a dinner at Villa Curti in Sovizzo, which dates back to the late 16th century. Doris Lunardi and her family once again took the stage, thanking the attendees as well as showing a video that retraced the company's history.

“It feels incredible to celebrate 50 years,” said Massimo Ballo, VTN's sales manager. “There was a



Massimo Ballo, sales manager at VTN.

Golden Anniversary



demand to customize products on demand, and we were able to. We understood the necessity of the market, and learned from the market as well."

But the most important factor in running a company for this long is the kinship between colleagues

"The reason why it's still working is because

it's a family company," Ballo added. "It's important to stay together, grow old together and find support. You can't do this alone. The team are all on the same page, the suppliers too – everyone here is a friend."

www.vtneurope.com



VTN's production facilities.



The entrance to the evening celebrations at Villa Curti in Sovizzo.



Epiroc Celebrates Hydraulic Breaker's 60th Anniversary

What was once simply an idea in the German city of Essen six decades ago, became a breakthrough product used across the construction and mining industries globally. Originally developed by Krupp Berco Bautechnik, the rig-mounted hydraulic breaker was patented in 1963. The first machine HM 400 was a hit at the Hannover trade show in 1967. From that time onwards, more than 2,000 units were sold.

The breaker was exclusively designed to save time, eventually becoming a cost-effective solution in the construction industry. The demolition and mining operations at that time was all about increasing labor, time, and costs as the pneumatic tools were widely in use. But the hydraulic breaker was a real game-changer as one was enough to replace several pneumatic tools. It was soon known to be a huge time saver that comparatively costed little.



The hydraulic breaker revolutionized the entire construction and mining industry, and today, they become a part of the standard fleet anywhere, be it a small or large-scale project.

In 2002 Krupp Berco Bautechnik was acquired by the Swedish Atlas Copco Group.



In 2018, Atlas Copco announced its split from Epiroc. While the former continued focusing on industrial customers, Epiroc took the lead on mining and construction, including hydraulic breakers.

"The breaker was only the start of the development of other attachment tools such as cutters, pulverizers, grapples, shears, magnets, crushers, screeners, and many others," notes Gordon Hambach, who heads strategic marketing for Epiroc hydraulic attachment tools.

In 2020, Epiroc brought hydraulic breakers into the digital age with Hydraulic Attachment Tools Connectivity (HATCON), an advanced level fleet management system that monitors operating hours, location, and service intervals. The data from HATCON provides a new level of control where utilization is evenly distributed, optimizing transport and increasing uptime with pre-planned service stops has never been easier.

"Epiroc hydraulic breakers are still the market leader in most countries around the globe," Hambach says. "With hundreds of brands in the industry today, the hydraulic breaker still offers a time-saving and cost-effective solution for demolition, utilities, rock excavation and many more applications."

www.epiroc.com



Recycling is Like Magic

The goal of recycling is to reduce the amount of waste sent to landfills and to promote environmental sustainability. Here are some examples of how MB Crusher products makes that happen quickly and efficiently. Let the "magic" begin! In Croatia, a rotating MB-G1200 sorting grapple is used to move and sort waste in a recycling center, because the unit can provide extreme precision. Part of a nine-model range, the MB-G1200 is designed for an excavator with an operating weight between 20t and 33t, so it perfectly fits the client's Komatsu PC210.

All of the MB Crusher sorting grapples are equipped with a load-holding valve that guarantees maximum safety on any construction site. The load-holding valve avoids accidental openings in case of sudden pressure drop of the carrier machine, as well as a silent block, which allows its use even in areas where it is necessary to keep noise under control. The perfect tools where versatility and precision are needed. In Italy, the choice for cleaning topsoil has been an MB-HDS314 padding bucket. A 0.3-in (7.6mm) RE8 Fine Sifting Kit was installed as the soil was used to create a new sports center, allowing the contractor to reuse of the excavated soil directly at the site. This model can fit excavators from 14t to 22t and be mounted on a Caterpillar 315.

There are 10 additional models of



padding buckets, the range starts from 1t machines covering up to 50t. All of the models have interchangeable shafts that can be replaced in a few minutes, along with a shaft holder that allows you to easily insert and align the rotors.

In Brazil, operational costs are reduced by crushing reinforced concrete pillars with a BF90.3 crusher bucket. Once crushed, it will be possible to reuse the aggregates, as the jaw crusher provides regular output and separates the iron. The unit weighs 7,716 lb (3,500 kg) and can be mounted on excavators from 23t to 35t,

www.mbc crusher.com



Advanced handheld metal scanning tools from Zircon detect rebar and other metal deep within concrete to increase worker safety and reduce costs on replacement bits and blades.

A construction site is not a place to take safety risks, but safety is what you risk when you indiscriminately cut or drill into a maze of rebar. When blades or bits hit metal, they can shatter into flying fragments or grab and bind in the material, causing kickback that can result in severe hand and wrist injuries, if not worse. Worker injuries of this nature can lead to project delays and costly worker's comp claims. Damaged concrete, drill bits, or saw blades additionally lead to downtime and unnecessary replacement costs.

It is crucial to identify where rebar is located before drilling or cutting into a concrete structure. One technique is ground penetrating radar (GPR), which can



Scanning for Rebar in Concrete When It's "Everywhere"

locate metallic and non-metallic objects by sending a small electromagnetic pulse into the concrete and analyzing the echoes that result from subsurface objects. Although GPR is quite effective at locating rebar deep within a concrete structure, the equipment requires extensive training and can be very expensive.

Fortunately, handheld metal detectors have been around for decades and are very easy to use at a lower cost and with fewer headaches than GPR. Zircon, a leading manufacturer of sensor technologies, offers several models that can detect rebar in concrete at different depths, so the end user can select the best device to fit their needs.

Zircon addresses the issues of locating rebar in concrete through innovative handheld scanning devices such as the MetalliScanner® MT 7 and the MetalliScanner® MT X metal locators.

The MetalliScanner MT 7 metal detector can be used to locate rebar, pipes, and other metal before sawing or drilling. The scanner can locate metal, including half-inch rebar, up to 6 in (152.4mm) deep. It offers users two scanning modes – Standard and DeepScan® modes – with position accuracy to within \pm half-inch for #4 rebar, which is often used

as a strengthening material in slabs, piers, columns, and walls. The MetalliScanner MT X metal detector is designed to address the difficult task of locating the spaces between rebar in tight grid patterns. In Deep-Scan mode, the MT X can locate rebar or metal pipes up to four inches deep.

The Devil's Slide Tunnel Project

A Zircon metal scanner was put to the test during the construction of northbound and southbound tunnels for a project along California's highly trafficked Highway 1 along the cliffs on the Pacific Coast. The area is known as Devil's Slide, due to mudslides from the steep terrain above the highway that often close sections of the road for months at a time. The two 4,200 ft (1,280m) tunnels are connected by ten mechanical rooms.

In one of the first phases of the project, the construction crew was tasked with installing a ventilation system in one of the mechanical rooms. However, due to the extensive amount of rebar, Zircon's MetalliScanner® MT 6 metal detector, the precursor to its new MT 7, was indicating metal "everywhere." The reason there was so much more rebar was its location

in earthquake country. Given the challenge, the crew contacted a Zircon representative, who came to the jobsite to help troubleshoot the problem. He suggested that instead of focusing the MT 6 on finding metal, the crew should instead focus on the weakest signals to find the gaps in the rebar.

The team proceeded to use the Zircon MT 6 to scan in this manner in the remaining nine mechanical rooms and were successful in drilling to install the ventilation without hitting rebar 99% of the time - a vast improvement. The next phase of the project involved installing Jet Fans, which required the crew to drill into concrete while suspended high in a bucket. The MT 6 allowed for quick scans to determine the ideal locations for the 4.5-in (114.3mm) concrete fasteners.

Because the scanner is lightweight, the crew was able to perform multiple overhead scans quickly. At the project's completion, the crew advised Zircon that it would be beneficial to add a wrist strap to future metallic scanners to facilitate overhead scanning. This feature has been incorporated in the company's current model, the MT 7, along with a pivot handle attachment and optional extension pole.

www.zircon.com

World of Concrete Celebrates

World of Concrete in Las Vegas is a real long-runner and a valued annual international gathering point for, among other things, industries for concrete drilling, grinding and polishing of concrete surfaces, demolition, remediation and more. In January 2024, the fair celebrates a full 50 years.

On January 23-25, 2024, it's time again for the World of Concrete trade show to take place in Las Vegas.

This time it is a little special as the tradeshow celebrates 50 years. It started in 1974, just 12 years later than the German mega show Bauma in Munich, Germany. At that time, World of Concrete was a much more local tradeshow, but would quickly become a pan-American event that also attracted both exhibitors and visitors from the rest of North America and beyond. Today, World of Concrete is almost as much an international tradeshow as an American one, with exhibitors from all over the world, although the American exhibitors dominate.

World of Concrete is a classic construction machinery tradeshow with a strong focus on slightly lighter machines for various types of processing, mainly concrete. Here, you won't find as many manufacturers of really heavy machinery and tools as at Conexpo. What makes World of Concrete unique to PDa Magazine is its strong focus on concrete cutting equipment, light demolition equipment, diamond scrapers, concrete floor grinding and polishing

machines and tools, hazardous concrete dust and slurry handling and collection equipment, cleanup equipment, hydrodemolition, and more.

Construction machinery fair with a strong focus

Few other trade shows can match World of Concrete in reaching precisely these categories of manufacturers and end users of the equipment. World of Concrete is also one of the few tradeshow that is organized annually and also manages to maintain its numbers of both exhibitors and visitors.

While tradeshow once alternated between different American cities such as Orlando, New Orleans, others Las Vegas has been its home for nearly two decades.

World of Concrete's 2020 edition was already in the books when the coronavirus pandemic hit the world. The 2021 show was moved to June with the hope that the pandemic would have calmed down. But the tradeshow was almost the smallest ever with few international visitors. It was then decided to reduce the number of days down to three, which continues for this coming year with more than 1,350 exhibitors booked. The 2024 show will also coincide with the annual meeting of the International Association for Concrete Drillers & Sawers (IACDS).

PDa Magazine will exhibit in the Central Hall booth 4244. Welcome!

www.worldofconcrete.com

shows

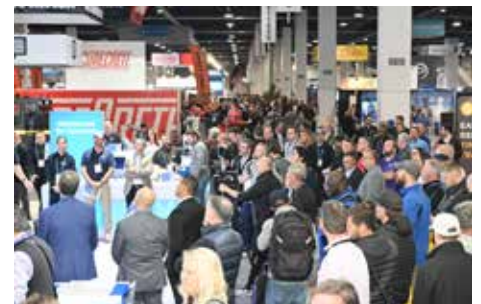
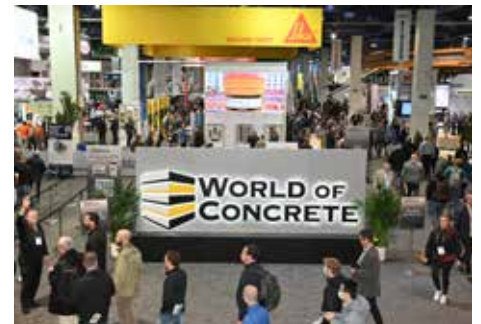
celebrates 50th Anniversary



50 YEARS SOLID WORLD OF CONCRETE®

Selected list of exhibitors at World of Concrete 2024

Advanced Equipment Inc	C5387	E-Z Drill, Inc.	C3333
Ajax Tool Works	S13353	Floorguard Products	S13149
Allen Blasting and Coating	S13826	Fuzhou Bontai Diamond Tools Co.	S11519
Allen Engineering Corp	C4331	Gensco Equipment	N3129
Alpha Professional Tools	S12955	GSSI	N1353
Antraquip Corporation	C7021A	Hatz Americas, Inc.	C3355
Ashine Diamond Tool Co. Ltd.	S11807	Hilti, Inc.	O30800
AUSA	C6677	Hongtai Diamond Abrasive Tools	S13432, S13432
Autec North America	C3028	Husqvarna Construction	O31326
Aztec Products, Inc	S11808	Hyundai Everdigm	C6761
B2W Software	N1545	ICS Diamond Tools and Equipment	O31668
Bartell Global	S10627	Jetstream of Houston LLP	C3215
Bell Trucks America, Inc	C7327	Komplet North America	C6877
Beton Trowel BV	C4862	Liebherr USA, Co.	C6149, N1011
BlastPro Manufacturing, Inc.	S10801, S11727	Lissmac Corporation	C4649
Bobcat Company	C5347	Makinex Construction Products	S12617
Boren, Inc.	O31728	Makita	O30040
Bosch	O30303	MB America	O30327
Brokk	C4005, O32100	Milwaukee Tool	O30458
Buffalo Turbine	S12510	Multiquip	C4804
Canycom USA, Inc.	C4655	National Flooring Equipment	S11326
Carhartt Company Gear	N2023	Norton Clipper	C3415
Cat Diamond Tools	O31652	PDi Magazine/ Pda Magazine	C4244
Caterpillar, Inc	C6061	PR Diamond Products	O31250
Concrete Sawing & Drilling Associ.	C4211	Pulse-Bac Vacuums	S12550
Conjet	N2212	RubbleCrusher	C6851, C6851
CS Unitec Inc	O31720	Runyon Surface Prep Rental	O30913, S12343
Darda GmbH	C6689	Samedia Corp.	O31570
Develon	C7226	SASE	O30761
Dewalt	O30958	Sonmak Diamond Tools	C4849
Diamabrush	O31942	STIHL Inc.	C4631
Diamond	S12348	Superabrasive, Inc.	O31710, S10507
Diamond	S13513	Surface Systems and Instruments,	N1351
Diamond Blade Warehouse	S11627	Syntec Diamond Tools Inc.	S12211
Diamond Products	C4305, O32050, O32157	Terra Diamond / GDM Equipment	C4519
Diamond Speed Products, Inc.	S12533	Terrazzo & Marble Supply Comp	S13146
Diamond Vantage	C3641, C3641a, C3641	Texas Pneumatic Tools, Inc.	S13106
Diapro	S13154	Titan Diamond	S13407
Digga Attachments & Kanga Loaders	C4529, C4623	U.S.SAWS	O31950, S10911
Distar	C3016	Vacuworx	C3327
DITEQ Corporation	C4315, O31961	Wolff Tools	S13017
Dustcontrol, Inc.	S12527	World Diamond Source Inc	S11107
Dymatec USA LLC	O31660	Xiamen Bestop Diamond Tools Co.	S11616
Everything Surface Prep dba US	S10501	XIAMEN M&R DIAMOND TOOLS	S11809
		XIAMEN METOOL DIAMOND	S11508
		Xingyi & High Tech Polishing	O32030
		Xtreme Engineered Floor Systems	S12946
		Xtreme Polishing Systems	S13807
		Youngsun Diatech	C3056



What's New With Demolition Robots



New machines from Husqvarna and Elgo-Plus spotlight the year's developments.

Most people are aware that the remote-controlled demolition robot has its origin in Sweden. The country's brands are still dominant in the global market, with the founder of the concept, Brokk, still having the widest range available. In second place comes Husqvarna which today has five models in the small to medium weight range. Another strong brand is Top Tec from Germany that has been in the demolition robot field almost as long as Brokk, being founded in the early 1970s. Over the years, there have been a number of other small manufacturers such as Demec, Thordab, and Finmac from Finland.

In more recent years, a few other brands have popped up outside Scandinavia. German manufacturer Kiesel formed the company K-TEG and launched the KMD-RD22 in 2017. About the same time, US company Alpine Cutter launched the Alpine Robot RDC. Euro Implementos of Spain launched its

RDC 15.10 in 2018, followed by a number of models from ES Robotics in the UK under the brand name Akula. It is also worth mentioning Hong Kong-based HD Engineering's HD series, as the company was once a distributor of Brokk machines. There are also a number of mainland China manufacturers of demolition robots. That brings us to 2024, with two new models set to join the market.

Husqvarna's DXR 95 to Debut at World of Concrete

The DXR 95 is Husqvarna's lightest and most compact model to date and has been under development for about two years. It is considered by the company to be a major investment. When Husqvarna Construction entered the demolition robot market in the early 2000s, it chose to develop robots in the weight classes that best met the needs of customers. Husqvarna quickly became a worthy competitor to Brokk, which had dominated the market since the company was founded in the early 1970s. "We have worked intensively with this model for a couple of years and it feels great to now launch it and to share in the customers' positive response," says Husqvarna product marketing manager Niklas Tillbrandt.



The company's light demolition director Fredrik Linnell adds that when the actual development work was finished, operators from several countries were invited to test the machine in various applications and

"Everyone who has operated the robot has appreciated the high performance in relation to its size and the user friendliness of the upgraded remote control," Linnell says.

The DXR 95 is intended for operators who want a strong demolition robot with high productivity which



can be loaded onto a smaller transport vehicle and can be driven with high precision in tight spaces. The new machine is completely in line with the other models in the series. The electro hydraulic driven machine delivers 13 hp (9.8kW) of power and up to 3,626 psi (250 bar) of pressure all the way to the tool at the end of the demolition boom. Despite this, the machine weighs 1,300 lb (589kg) which makes it very easy to transport in a smaller van, and it is easy to set up and work with in tight spaces. It is also well balanced and easily handles tilt angles of up to 30° without feeling unstable when working.

The new remote control is very user friendly and intuitive; the operating levers and the various buttons have been ergonomically tested to make the operation of the machine smooth for the operator. It is easy to select and change settings even with gloves on. The remote control has a large bright LCD screen and it is possible to choose between a number of different languages.

The DXR 95 has been equipped with several other important features that prevent unnecessary downtime. These include a heavy-duty arm system with robust friction welded cylinders, automatic hammer lubrication for longer service intervals and protection of vital parts in the tough lower chassis. All components are easy to access and

remove to make service and maintenance quick and hassle free. The DXR 95 also gives the operator more flexibility. Using the remote control, the operator can easily adjust parameters such as water, grease and hydraulic functions to suit the operator's preferences as well as adjust pressure and flow to match the requirements of non-standard tools.

www.husqvarnaconstruction.com

New demolition robot brand from Poland

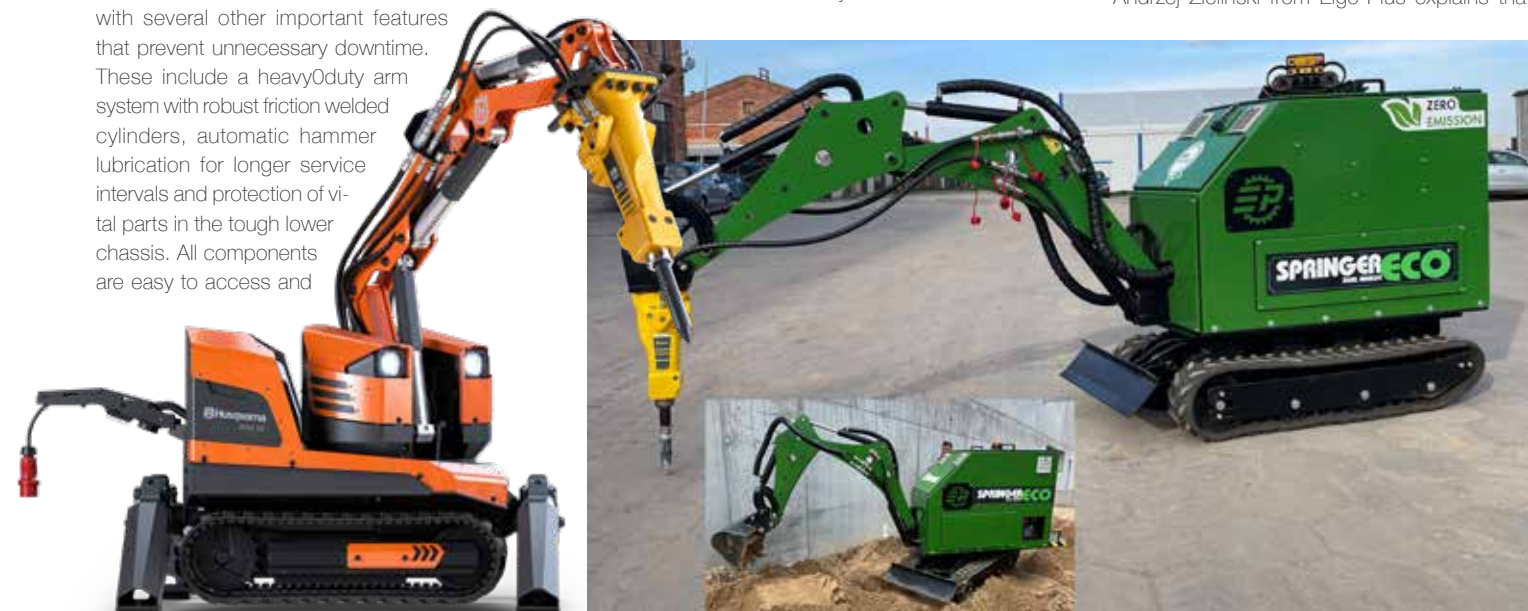
Elgo-Plus mainly manufactures micro and mini-diggers and tracked chassis for various applications, and other equipment produced is characterized by simplicity, reliability, and ease of use. This makes the Elgo-Plus machines very practical for many industries, including gardening, construction, process industry and even mining.

The company's demolition robot is called Springer Eco. It is a multifunctional tool that can be operated on battery power, which is a completely new function to the industry. It has an innovative



battery charging system which is in the process of being patented. The batteries are charged automatically while the machine is connected to a power source, allowing it to work continuously.

Andrzej Zielinski from Elgo-Plus explains that





the company elected to enter the demolition robot market because of growing demand for machines that can perform manual work.

"Therefore, companies are forced to invest more and more into equipment that will speed up and facilitate many works and what is more, make them safer," Zielinski adds.

The latest development is that the radio control and the battery power of the machine has no cable needed during the displacement of the machine or during small jobs. Doing larger projects, the machi-



nes are easily connected to a 400V power outlet and the batteries are charged during work. If connected to 230V, the batteries are charged during parking.

One advantage with Springer Eco is that besides it being a demolition robot, it can also be used as a

360° rotating mini excavator. It can also be equipped with a grapple for heavy lifting or material handling. The machine is delivered with a grapple, a quick hitch, three buckets and a ground frost hook.

www.elgoplus.pl

**EXPERIENCE PRECISION AND
EXCELLENCE WITH SANWA.**

**CRAFTED WITH ADVANCED
DESIGNS FOR CONSISTENT
PROFESSIONAL QUALITY AT
AN ADVANTAGEOUS PRICE.**

**MADE WITH THE BEST IN
THE WORLD - DR. FRITSCH
LASER WELDING MACHINE.**



Sanwa Diamond Tools Pvt Ltd
Plot No. 144, Jigani Bommasandra
Link Road, Jigani Industrial Area,
Bangalore - 560105, India



sanwadiamondtools.com
 info@sanwa.in



Aquajet Launches Revojet 270

Aquajet has introduced the Revojet 270 high-pressure pump, a highly mobile and compact unit designed for smaller scale projects. It's designed to pair with Aquajet's other compact robots for applications such as small parking garage renovation and industrial cleaning.

The new 270 comes with the "Revo" system that provides a wide range of functions for users to control and monitor the Revojet in a safe, user-friendly package. Its features include closed-loop pressure control or rpm control and smart pressure regulating. The Revojet also has a mode that flushes the hoses without any nozzle mounted. Operators can easily set parameters and can see all important information in real time or view history of items such as the alarm list. The trailer unit weighs 7,716 lb (3,500kg), making it light enough to be towed with a pickup or large SUV while a stationary Revojet unit is also available.

The Revojet has a standard configuration of 40,610 psi (2,800bar) and 10 gpm (40 lpm). For operations requiring more power, two Revojets can be parallel operated to increase pump power as a flexible alternative to a larger pump.

The Revo remote comes standard and, to increase flexibility, operators can leave the remote in place on the unit or detach it to control the Revojet from up to 984 ft (300m) away with extension cables. The main power system monitors the battery level and shuts down when critical to avoid discharging them completely. It also offers an adjustable auto shutdown timeout that can automatically turn off the main power after

a certain period of inactivity to save battery life. The main power is also automatically kept on until the engine finishes its shutdown process.

The Revojet's main power system monitors the battery level and shuts down when critical to avoid discharging them completely. It also offers an adjustable auto shutdown timeout that can automatically turn off the main power after a certain period of inactivity to save battery. The main power is also automatically kept on until the engine finishes its shutdown process.

When servicing the Revojet, operators can turn off the pump and remove the ignition key, disabling all system functions except for the work lights to increase user safety. An additional safety offering is the Revojet's flashing status light, which relays information and warnings by changing flash frequency and color.

In addition to the standard radio remote control, the Revo system is compatible with most remotes and high-pressure tools on the market. When the robot is connected to the Revojet, everything works as one unit through the radio remote control. This allows operators to connect multiple pieces of equipment. The Revojet was designed to provide easy access for service and maintenance with two large hatches, one on each side of the machine, allowing workers access for routine resulting in less downtime, so the jobsite gets up and running faster when it comes time for service. For bigger jobs, Aquajet offers several larger pumps.

www.aquajet.se



Rotar Celebrates Win at World Demolition Awards

Rotar's RCC RCC45 Concrete Cutter with Ramplifier technology and fully-integrated Oilquick OQ90, won the Innovation – Tools and Attachments Category at the World Demolition Awards, presented recently in Toronto, Canada.

Suitable for 40t to 70t excavators, the RCC45 Concrete Cutter is designed for primary demolition and has a huge jaw opening and a tremendous cutting power. The Ramplifier technology gives double the power and sits at the top of the market. In a split second it doubles the input pressure to a maximum of 10,150 psi (700 bar).

"It's a team effort and I'm proud of the entire Rotar crew, for all their hard work to bring this innovative piece of equipment to the marketplace," says Rotar commercial director Louis Broekhuizen. "We continually monitor new technologies to create marketing leading equipment for the demolition industry."

Rotar, specializes in attachments for the demolition, recycling and scrap industry, including shears, pulverizers, processors, grabs, concrete cutters, screening/washing buckets and segregator buckets.

The company continually strives to evolve its technology to offer maximum productivity, and ensure their equipment is sustainable and durable, with ease of service and maintenance being a key consideration. All the attachments are manufactured with efficiency in mind, enjoying less fuel consumption and reducing the impact on the environment.

www.rotar.com



Exclusive Diamond Sponsor



www.sdca.se

DEMCON 2024[®]

19-20 September, 2024

9th Edition of the Scandinavian Demolition Show

**Demolition • Concrete Cutting • Recycling • Remediation • Floor Preparation •
Handling of Dust and Slurry • Hydrodemolition • Scrap Handling ... and a Lot More.**

Exclusiv Ruby Sponsor

Pentrunder[®]
CONCRETE CUTTING SYSTEMS

Exclusiv Platinum Sponsor



Gold Sponsors



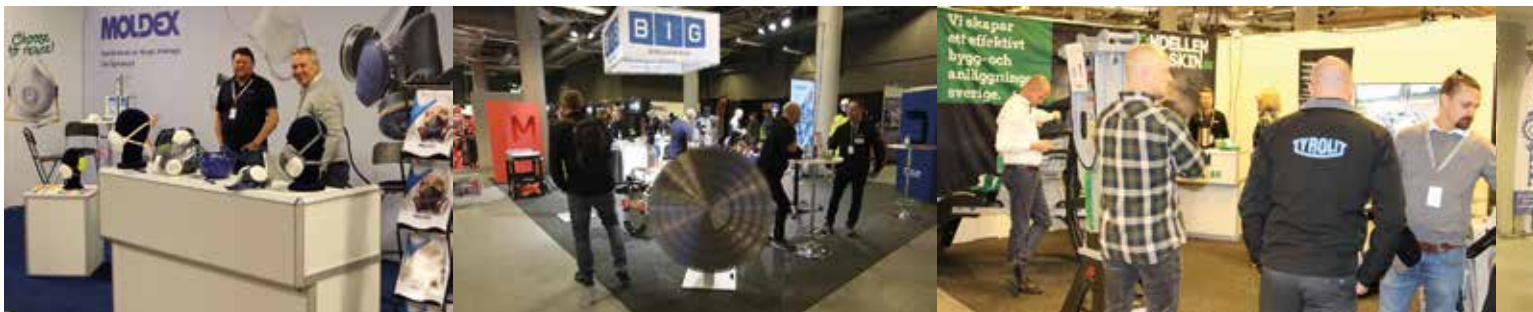
Husqvarna[®]

The Tradeshow is Supported by



Organizer





A new year means it's time to start thinking about trade shows. And while both September and Sweden are both far away, it's not too early to consider participating in the DEMCON 2024 trade show, which will be held = September 19-20 at the Infrafair in Bredden north of Stockholm.

Since the first show in 1998, the show spans the breadth of demolition sectors—concre-

te cutting, demolition, recycling, remediation, grinding and polishing of concrete floors, dust and slurry management, water treatment, and other related services contractors may offer.

"During the roughly 30 years that we have worked with the demolition industry, it is interesting to note that many contractors have embraced so many more techniques than what they originally worked with," says PDA editor-in-chief

Jan Hermansson, who also organizes DEMCON. "Today, offering demolition services or grinding of concrete floors is almost a matter of course.

"At the same time, Hermansson adds, strong competition heightens the need for manufacturers to differentiate themselves with greater know-how, more efficient machines and methods and more efficient tools.

"Suppliers have a challenge to capture this



and DEMCON then becomes an even more important event," he says.

DEMCON's indoor and outdoor exhibit area will feature most of the industry's major manufacturers, with the welcome addition of more diamond tool manufacturers from India. The annual "DEMCON party," scheduled for the evening of September 19, will also include presentation of the Swedish Demolition Awards.

"It's always fun to start preparing for a new DEMCON event and we always start about a year before the fair so now is the time," Hermansson says. He notes that the Swedish demolition industry is still doing well, albeit with a shift to work in the renovation and re-building sectors, which should also prevent overbuilding in the region's housing market.

"The beauty of the demolition industry is

that even if you live in a recession, the jobs don't usually run out," Hermansson says. "Despite a slightly more difficult market situation, I believe that the timing for DEMCON 2024 is good. I hope that the unrest in the world has subsided a bit by the fall of 2024 and that there is a need and willingness to invest. Our contractors still have a fair amount to do, but some may feel the downturn more than others."



SCOP  PUBLISHING

DEMCON c/o S.C.O.P. AB • P.O. Box 786 • SE-191 27 Sollentuna • Sweden • Phone: 0700 300 650 • info@demcon.se • www.demcon.se

www.demcon.se



Get a Load!

What a great time to be in the market for a new compact loader or skid steer! Manufacturers continue to roll out new products with the power that rivals their next-class cousins, yet with efficiency and productivity that keep operating costs comfortably low. The range of electric options is also expanding as well, providing benefits for both sustainability and working in close confines.

Note that while specific machines may not be available in every market, or go by different model names, the descriptions provide a helpful benchmark for comparing products and making wise purchasing decisions. So take a look...and get to work!

Kubota introduces SVL75-3 compact track loader

Kubota's SVL75-3 replaces the popular SVL75-2 model with a wide range of performance, comfort and productivity features. It's powered by a 74.3-hp (55.4kW) Kubota engine that provides higher maximum torque, allowing for quick and efficient work. The SVL75-3 has a rated operating capacity of 2,490 lb (1,129 kg) at 35% or 3,557 lb (1,613 kg) at 50%, an impressive 6,191 lbf (27.5 kN) of breakout force, and a hinge pin height of 122.7 in (3,117 mm). An innovative Advanced Multifunction Valve (AMV) helps ensure smooth movement of all hydraulic functions, allowing operators to run the auxiliary hydraulics,



bucket, and loader arm functions at the same time with a lower risk of stalling. The Electronic Travel Torque Management System constantly monitors machine load to optimally control hydraulic pump output, reducing engine stalls for smoother operation in even the toughest conditions.

Other features include faster two-speed travel and the Advanced Auto Downshift system that automatically downshifts from high to low gear while making turns, immediately providing the maximum amount of torque needed when exiting a turn. Operators also have the ability to change their travel response sensitivity with the choice of mild, normal, and quick track response settings.

The SVL75-3 is equipped with Kubota's new one-piece sealed cab that helps prevent dirt, dust, rain, and debris from entering the operator space while also reducing noise levels. Operators step into a wide cab entrance through a sliding front door that can be opened regardless of the position of the bucket or loader arms. Machine operation is possible with the door open. The one-piece sealed cabin can be tilted up 56.5 in (1,435 mm) without having to lift the boom, providing access to the hydraulic pumps, valves, lines, and hydraulic tank.

www.KubotaUSA.com

ASV's Yanmar-powered RT-40 with dealer-serviceable engine

ASV's repowered RT-40 Posi-Track® loader with a 38.2-hp (28kW) Yanmar engine adds more power to what was already a compact powerhouse. The increased power and convenient serviceability add to the appeal of the RT-40 as a more productive, safer option than walk-behind and stand-on loaders. The repowered RT-40 features a 48.3-in (1,227mm) width, 8.4-ft (2.56m) lift height, and a top speed of 7.1 mph (11.4 kph). The machine also boasts high tractive effort, and exceptional pushing and digging power thanks to ASV's Posi-Power system. The RT-40's quick-attach fits a variety of attachments and works with an optional adaptor plate for full-sized or walk-behind/stand-on loader attachments. An idler wheels full-metal-face seal package increases the ROC to 1,008 lb (457.2 kg). In addition, the loader's compact size allows it to be conveniently towed behind a half-ton pickup truck.

The RT-40 comes standard with variable auxiliary



hydraulic flow and can operate efficiently at a high auxiliary circuit flow rate. Labor-intensive belt servicing is eliminated thanks to a direct-drive pump, which, along with the machine's large line sizes and hydraulic coolers, transfers more flow and pressure directly to the attachment to help prevent power loss.

The RT-40 is tested to operate at full load 100% of the time in ambient temperatures ranging from 40 to 118°F (-40 to 47.7°C). The machine offers a safer and more productive alternative to similar-sized walk-behind and stand-on skid-steer loaders. Its cab features rollover and falling object protection, sheltering operators from outside elements with available enclosed configurations, and eliminating the fatigue that comes with standing.

With 10.8-in (274mm) of ground clearance—higher than any walk-behind or stand-on loader, as well as many larger machines—the RT-40 can easily travel over rocks, logs, stumps, and other obstacles with less risk of getting hung up.

www.asvi.com

er) of These



and MCL8—the series presents versatility and agility. The MCL2 and 4 models have a 25-hp (18.6kW) engine, while the remaining models come with a 49-hp (36.5kW) engine. Each machine in the MCL series offers easy transportability between jobsites with low

on the MCL6 and MCL8 models. The MCL4+ and MCL6+ models come standard with a short boom, which offers a better tipping load, whereas the other four models come with a long boom that maximizes tipping height. Long or short boom, the MCL series machines yield multi-functionality through compatibility with a wide range of attachments. The optimum height-to-width-to-length ratio ensures agility on any jobsite. Each machine has a 45-degree articulation that keeps the front wheels traveling in the same path as the rear wheels while driving. A 10-degree oscillation allows a strong follow-up and maximum traction wherever the machine might travel, including on uneven ground.

www.mecalac.com



Mecalac launches multifunctional compact loader line for North American market

Mecalac has launched a new product line of robust compact loaders to North America. Comprised of six models—MCL2, MCL4, MCL4+, MCL6, MCL6+,

transport weight, which ranges between 3,836 and 6,283 lb (1,740 and 2,850 kg) and minimal width—ranging from 3.3 to 4.3 ft (1.0 to 1.3 m) depending on tire selection. The easy transportability appeals to contractors hauling multiple pieces of equipment as well as rental fleets handling pickup and delivery.

Mecalac's M-Drive and speed control features—standard on the MCL6 and MCL8 models, and optional for the MCL2 and MCL4 models—allow the loader to function as a tool carrier, providing control of rpm by hand throttle and speed via a foot pedal. This enables more precise and controlled operation of a wide variety of hydraulic attachments.

Each model in the MCL series has an option for auxiliary hydraulic lines on the boom and at the rear of the machine, as well as 12V 3-pole plugs. This feature further enhances versatility by allowing the ability to use hydraulic attachments on either end of the machine. The series maximizes attachment possibilities with 7.9 gpm (30 lpm) flow on the MCL2 and MCL4 models and 15.9 gpm (60.2 lpm) flow

Also from Mecalac, the AX1000 offers stability, intuitive operation, and heavy-duty performance

Mecalac's AX1000 articulated loader combines heavy-duty performance with self-stabilizing maneuverability and a sleek design, plus a monoboom that provides greater boom rigidity and strength, resisting the twisting that can occur with the traditional two-arm setup. Combining large, tinted windows with the unique monoboom design, the AX1000 eliminates the two loader arms obstructing the operator's view and allows clear visibility to the left and right in addition to straight ahead. Along with enhanced safety, the added visibility boosts productivity.

The AX1000 also offers greater stability because the machine's pivot joint is offset at a positive angle. As the machine articulates, the center of gravity is transferred to the rear, so it can re-level itself, greatly reducing the risk of the machine toppling over.

The AX1000 has a standard bucket volume of 1.3 yd³ (1 m³), a 75-hp (56kW) engine, and a lift capacity



of 9,038 lb (4,100 kg). Further, the AX1000 maintains lifting power from the ground to its highest point whereas other articulated loaders reach maximum lift capacity midway through the cycle. Mecalac also updated the AX 1000's interior features to deliver an enhanced riding experience. The ergonomically laid-out pilot controls condense multiple functions from the auxiliary hydraulics into one joystick. The cabin includes a multi-position comfort seat, glove box with ample storage space and a powerful three-stage ventilation and heating system.

www.mecalac.com

Yanmar introduces first compact track loader

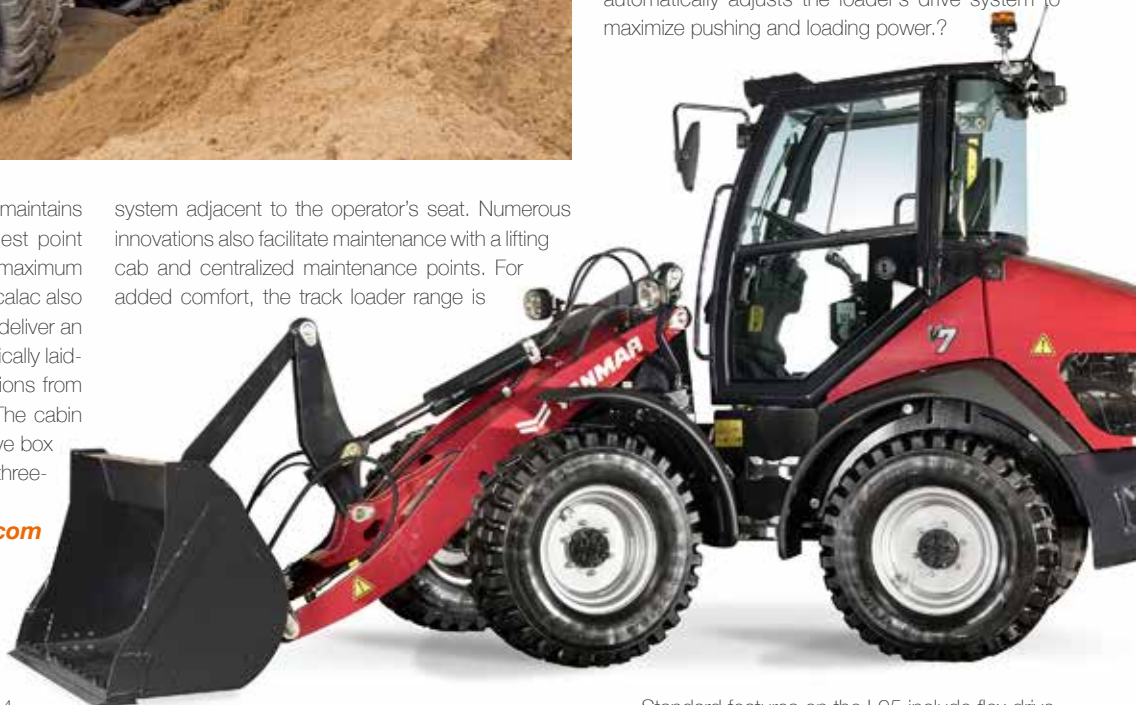
Yanmar Compact Equipment's TL100VS is the first machine in the company's compact track loader line. It features a Tier 4 Final Yanmar diesel engine; a torsion axle suspended undercarriage with a pivot link system at the rear axle and large line sizes. Features range from error detection and notification to real-time operational status updates and daily work reports. Bar-tread tracks offer ride quality and vibration resistance, and increase traction in extreme conditions. Yanmar also launched the construction-grade TL65RS, TL75VS, and TL80VS machine.

Manitou/GEHL updates compact loader lineup

Manitou/GEHL used Conexpo 2023 to launch three all new "V Series" compact skid steer loaders and three "VT Series" compact track loaders. These new models have a capacity of 2,100 to 2,750 lb (953 to 1,247 kg). Breakout force is now 12% higher on average, compared with the previous range, while the tank capacity is increased by 14%, allowing users to enjoy greater productivity.

All models are vertical lift and feature a new lift arm design, as well as keyless start requiring only code activation, LED lighting, and a patented Pilot joystick

system adjacent to the operator's seat. Numerous innovations also facilitate maintenance with a lifting cab and centralized maintenance points. For added comfort, the track loader range is



equipped as standard with the patented IdealTrax system, ensuring automatic track tensioning and extending the life of the tracks. Numerous options (additional LEDs on the sides, high hydraulic flow, rear camera, etc.) are also available to meet the requirements of each user. The operator's station has been redesigned with an improved version of Manitou/GEHL patented folding door, as well as a new window and roof design for better sightlines.

www.manitou.com/www.gehl.com



Bobcat unleashes its most powerful compact wheel loader

Bobcat's new L95 is the company's largest and most powerful compact wheel loader. The L95 provides exceptional material-handling capabilities with large bucket capacity, high lift height, swift travel speeds, and maneuverability to accomplish more.

With a standard bucket capacity of 1.2 yd³ (.9 m³) and 10.5 ft (3.2m) of lift height, the L95 excels at material handling and other jobs that require high maneuverability. Its electronic hydrostatic transmission delivers easy direction changes, efficient acceleration, and effortless speed control that helps operators tackle tough tasks on jobsites. A powerful combination of transmission and horsepower management automatically adjusts the loader's drive system to maximize pushing and loading power.?



Standard features on the L95 include flex drive, automatic ride control, high-flow auxiliary hydraulics, and an advanced attachment control mode. The advanced Tier 4, turbocharged engine delivers high-torque performance and excellent efficiency, while achieving emissions compliance without the use of



a diesel particulate filter (DPF) or selective catalyst reduction (SCR). Operators will also appreciate the engine's reliable, cold-weather starting and a variety of features that make maintenance and service more convenient. Bobcat compact wheel loaders come standard with the Power Bob-Tach System, allowing operators to share buckets, forks, angle brooms, snow pushers, grapples, snow blowers, augers, and other compatible attachments with other Bobcat equipment for even greater versatility.

www.bobcat.com

Also from Bobcat, a preview of the world's first all-electric skid-steer loader

At Conexpo 2023, Bobcat unveiled the S7X, a prototype for the world's first all-electric skid-steer loader. Like the T7X, the S7X is powered by a 60.5-kWh lithium-ion battery, features electric drive motors and utilizes ball screw actuators for lift and tilt functions. Together, the battery and electrical powertrain generate incredible performance characteristics, with instantaneous torque that is as much as three times greater than traditional loaders. The S7X balances sustainability and performance with zero emissions and is equipped to outperform its diesel-powered equivalent, all while offering operators a smooth and comfortable experience with minimal vibration and nearly silent operation. The machine can operate for up to eight hours on a single charge depending on the application, giving most operators more than a full day's work when breaks and downtime are considered. A full charge takes approximately ten hours. To bring the S7X to life, Bobcat partnered with Moog, Inc., a worldwide developer of motion control components and systems for industries ranging from aerospace and defense to construction. Bobcat also collaborated with Moog through its work on the T7X. Bobcat has yet to announce when and where the S7X will be made available.

www.bobcat.com

Wacker Neuson's new compact track loader promotes exceptional visibility and productivity

Though the smallest model Wacker Neuson's line-



up of compact track loaders, the new ST27 is an excellent pound-for-pound fighter in the compact medium frame size class. Weighing in at only 7,350 lb (3,334 kg), this machine is easily towable and with a rated operating capacity of 1,890 lb (857.3 kg) at 35%. Combine the ideal operating weight with a 74-hp (55.2kW) Kohler KDI 2504 turbocharged engine, and the ST27 offers an attractive power-

creating a better view to the rear. Additionally, the dedicated track frame design allows for a lower profile loader arm orientation, vastly improving side visibility. The ST27's cab fully tips forward with the loader arms down, providing complete access to all maintenance components. The machine is engineered to be user-friendly with a simple, open design and efficient layout that requires less time



to-weight ratio. The compact design, measuring 60-in (1,524mm) wide and under 80 in (2,032 mm) in height, makes it the perfect fit for working in tight spaces with low overhead clearance. The design also offers a reach at dump height of 36.5 in (927 mm), making it is easier to dump material into the center of a dump box while also keeping the loader farther away from the vehicle or trailer being loaded. The vertical lift, ST27 offers a hinge pin height of 120 in (3,048 mm) and dump height of 94.3 in (2,395 mm).

Enhancing the driving experience is a standard auto-shifting two-speed drive system that can be active or disabled based on the application. The system automatically senses the operators need to shift. The auto feature engages in and out of the two speeds based on joystick input, and eliminates the need for the operator to make manual shifts.

The vertical loader arm linkage is designed to maximize visibility to the rear. The shape of the rear linkage aligns with the cab posts in the operator's line of site in order to minimize visual obstructions,

on daily service checks and more time on the job.

www.wackerneuson.com

John Deere expands P-Tier compact wheel loader lineup

John Deere has expanded its Performance Tiering offerings with the shift from L-Series to P-Tier for the 244, 324, and 344 compact wheel loader models. The new P-Tier compact wheel loaders will carry over all L-Series features while also introducing new productivity-enhancing qualities as standard features.

Ride control, previously an optional upgrade on L-Series models, is now standard on all P-Tier compact wheel loaders. Ideal for customers moving materials over long distances, or on hard surfaces, ride control cushions boom movements during transport, acting like a shock absorber to help minimize material spillage. This feature is applied with a flip of a switch in the cab, and can be set to automatically engage and disengage at a predetermined speed.

In addition, P-Tier compact wheel loaders feature Articulation Plus™, which enables rear-wheel steering



to increase full-turn tipping load and improve maneuverability. This steering system combines 30 degrees of standard articulation with an additional 10 degrees of rear-wheel steering. Designed to provide increased ease of use for operators when utilizing attachments, the upgraded combined creep control and throttle lock found within the attachment assist controls package allows users to run their machines with higher rpm and lower ground speeds with overall fewer manual inputs. An enhanced pause and resume function means that reactivating the feature after a change in direction or switch to neutral is seamless as well.

An additional feature now offered on P-Tier compact wheel loaders is an optional auto-reversing fan, which is an easy-to-use solution for customers operating on sites with an abundance of debris or dust. Additional options include attachment assist controls, which include integrated three-pin electrical controls for attachments and combined creep control and throttle lock.

www.deere.com

Case's new mini track loader brings more maneuverability and muscle to small jobs

With an operating capacity of 1,000 lbs (454kg) and a super compact profile that can easily maneuver through yard gates, tree groves and other tight areas, the new TL100 mini track loader gives contractors a powerful, cost-effective option for upleveling productivity on small jobs. The 24-hp (17.7kW) machine also features a 14-pin electrical connector and a common industry interface (CII) for maximum attachment flexibility and performance. With more than 40 attachment options available, the TL100 can handle the work of multiple laborers on jobs like digging, earth moving, setting fence posts, grappling brush, and grading.

The CASE TL100 comes with a lower cost of ownership than the typical machine, and thanks to its compact size, this stand-on machine is easy to

transport from site to site, easy to get on and off, and causes minimal disruption to the ground. And the construction-grade build brings a new level of toughness and power to subcompact equipment, empowering crews to work more efficiently than ever with less manual work.

www.CaseCE.com

Meet the new line of small articulated loaders from CASE

Case's small articulated loaders are some of the most versatile machines on the market. The six-model line features power ranges from 24 to 74 hp (17.7 to 44.4 kW), operating capacity from 1,500 lb to more than 3,000 lb (680 kg to more than 1,360 kg), options for diesel or fully electric, and a full range of more than 110 powerful attachments.

Several of the small articulated loaders, including the SL12TR model releasing this fall, feature a telescopic arm to provide an extra-long reach for loading trucks or moving material into tough-to-reach places. And where lifting capacity is a priority, Case will offer more rugged models with traditional Z-bar loader linkage that can handle heavier loads.

In 2024, Case will launch the all-electric SL22EV that delivers the same power as its diesel counterparts and can be fully charged in one hour. This electrified machine provides a low noise, zero-emissions solution for getting work done in a broader range of environments, whether it's indoor work where air quality is paramount or a close-quarter residential neighborhood where contractors need to keep noise levels down.

www.CaseCE.com/SMAT

New Holland debuts small articulated loaders

New Holland Construction's new five-model line of small articulated loaders increases operator produc-

tivity with impressive lifting capacity, and tipping load features. The ML12 showcases a lifting capacity of 2,425 lb (1,100 kg) tipping load capacity of 2,205 lb (1,000 kg), and lifting height of 85.4 in (2,169 mm). With a narrow width of 36.2 in (919 mm), the 25-hp (18.6kW) ML12 also features an electro-hydraulic controlled differential, hydrostatic 4-wheel drive, standard lift path, and a common instrument interface (CII) mechanical attachment coupler. With the same horsepower and width as the ML12, the ML12T excels with its telescopic reach arm loader and lifting height of 111 in (2,819 mm). This extended lift allows operators to load and unload materials from large trucks, while the extended reach provides more flexibility in dumping, leveling and grading tasks. Multiple tipping load paths of up to 1,650 lb (748 kg), depending on loader position and 2,646-lb (1,200 kg) operating weight works well in light construction scenarios such as moving light debris and pallets.

Displaying a 3,086-lb (1,400kg) lifting capacity and 3,307-lb (1,500 kg) tipping load, the ML15 can carry heavier materials, including steel, lumber, and concrete items. The 26-hp (19.3kW) engine and 3,472-lb (1,575 kg) operating weight support a cab that features a safety entry bar, non-suspension vinyl seat, armrests, and exterior mirror features to create a comfortable driving experience. The ML22X model is New Holland Construction's first electric-powered small articulated loader. When fully charged, the 24.9-kW lithium-ion battery powers the machine for up to six hours, depending on the task. Multiple charging options are available to meet the various needs of operators. The on-board charger fully charges the battery from 0 to 100% in approximately 8.7 hours, while the fast-charge connector provides a full charge in less than two hours. The lifting capacity of 4,850 lb (2,200 kg), tipping load of 4,528 lb (2,054 kg), and lifting height of 96.5 in (2,451 mm) ensures smooth and strong loading, moving and hauling capabilities for



the operator. Finally, the ML23 showcases a 96.5-in (2,451 mm) lifting height, 4,982-lb (2,260kg) tipping load, a 4,850-lb (2,200kg) lifting capacity, and 26 hp (19.3 kW) at 2,300 rpm. The easy transportation and loading of the ML23 makes it a go-to machine for contractors that move from job to job quickly.

www.newholland.com

Cat's new 255 and 265 compact track loaders increase lift height, tilt, and lift breakout forces

The all-new, next-generation Cat® 255 and 265 compact track loaders feature new 74.3-hp (55.4kW) engines that maintain horsepower across a wider rpm range and boast significant torque increases – gains of

13% for the 255 and 43% for the 265. A redesigned engine compartment mounts the engine and cooling package lower into the frame for improved stability, giving the operator confidence in handling heavy loads and throughout all aspects of the work cycles.

Compared with the Cat 259D3 model, the new 255 loader delivers 36% more tilt breakout, 26% higher lift breakout force, and a 24% increase in rated operating capacity. Height to the B-pin for the 265, compared to the 289D3, increases by 7.6 in (193 mm), resulting in a maximum lift height of 11 ft (3.35 m) for easier truck loading. The 265 also delivers 19% higher tilt breakout force and 22% higher lift breakout force. The

closed-center auxiliary hydraulic system allows the 255 and 265 to operate all Cat Smart Attachments, including the Cat Smart Dozer Blade, with the standard auxiliary hydraulics provided.

Reengineering of lower machine components results in a stronger and stiffer undercarriage for improved machine stability and less pitching when filling the bucket with material. Its torsion suspension undercarriage delivers better operator comfort, track wear, and material retention, while the stiffer design results in smoother graded surfaces.

Both the Cat 255 and 265 compact track loaders

feature a larger cab design with 22% more overall volume and 26% additional foot space. A range of new mechanical and air-ride suspension seat options are available, including a high-comfort seat that is both ventilated and heated. New auto temperature control plus vent outlet positioning above the operator helps the new HVAC system quickly cool the cab's interior.

Featuring a low entry point, entering and exiting the 255 and 265 loaders is much easier. The operator can open the cab door without the lift arms being fully lowered to the frame stops. Visibility is improved via the lower engine mounting, a 59% larger rear window and bigger top window that provides a 15% increase in viewable area.

Technical specifications

	255	265
Gross power (hp/kW)	74.3/55.4	74.3/55.4
Engine torque (lb-ft/Nm)	221/300	280/380
Operating weight (lb/kg)	9,628/4,367	10,492/4,759
Rated operating capacity @35% (lb/kg)	2,499/1,134	2,822/1,280
Hydraulic pressure-standard (psi/kPa)	3,500/24,130	3,500/24,130
Hydraulic flow-standard (gpm/lpm)	23/86	23/86

Yanmar's new V7 compact wheel loader features premium capabilities and speed

Yanmar Compact Equipment introduces the all-new 47.6-hp (35-kW) V7 compact wheel loader to the North American market. The 9,370-lb (4,250-kg) machine fills the gap in the Yanmar wheel loader line between the V4-7 and the V8 and features a low operating weight, comfortable cab area and high bucket capacity. Its compact design, intuitive controls and high travel speeds maximize performance and efficiency for operators in landscaping, rental, municipalities, snow removal and other applications.

The V7 features a 0.92 yd³ (0.7 m³) bucket capacity, with optional light material bucket brings that bucket capacity to more than a full cubic yard. The compact wheel loader also includes a powerful Tier 4 Final Yanmar engine allowing for a lifting capacity of 7,981 lbf (35.5 kN). In addition, the V7 features approximately 40 degrees of articulation and includes a newly designed articulation oscillation joint allowing oscillation in the center of the wheel loader instead of the rear. This maximizes ground contact with all four wheels for optimal tractive force. Ergonomic joystick controls simplify machine operation. Creep mode allows for precise attachment control while Automatic Ride Control with Limited Slip Differential improves convenience and efficiency. Operators can easily access relevant machine information and options via a color display. Bright LED lights improve work area visibility while optimizing power consumption. Hydraulic quick couplers allow fast attachment change-out. Contractors can lift loads without the need for constant readjustment of the load angle thanks to the V7's parallel kinematics which keeps material level as its raised and lowered

www.YanmarCE.com



Second Edition of Demtech



While some countries are struggling with high inflation and the threat of a recession, India is going the other way. A good example of the country's economic confidence and performance was the second edition of the Demtech 2023 tradeshow held in the end of September.

In 2019, the Indian Demolition Association (IDA) was formed and the first edition of the Indian tradeshow Demtech took place with support from PDa and PDI magazines. Due to the Covid 19 pandemic, it would be a four-year wait before the second edition could take place. But on September 28-29, 2023, the second Demtech convention and tradeshow was held at White Petals in Bengaluru, with more than 500 attendees and 45 exhibitors.

A complete success

"The second edition of Demtech was a complete success," says Mohan Ramanathan, IDA founder and former chairman. "At the first edition, all exhibitors had very small stands, but this time all had full-size booths showing their products. Outdoors we had a demo area. This proves that the Indian

demolition industry is in search of avenues to network, connect and grow. While the first edition was a pathbreaker, the second cemented the fact that the demolition, recycling, and remediation industry is ready for such events."

The first day of the event began with the inauguration by Demtech's principal guest, K. Subramanian, executive vice chairman of Afcons Infrastructure Ltd. After the traditional lighting of the lamp to commence the event, welcome addresses were delivered by Ramanathan, an executive with Advanced Construction Technologies India, and Jan Hermanson, editor in chief of PDa and PDI magazines.

Ramanathan returned to the dais with Kate Bester of Jet Demolition of South Africa to moderate the keynote lecture, "A perspective on the



Mohan Ramanathan founder and first chairman of the Indian Demolition Association, a driving force behind Demtech India.



The Husqvarna Construction Product's booth in the exhibition area.



Demtech India also included a two-day tradeshow. More than 40 companies exhibited.

in India a Complete Success



Some of the delegates on stage on the second day of the conference and exhibition.

past, present, and future status of demolition and recycling in India and worldwide." A second keynote lecture was given by Anurag Sinha, EIL, who spoke on "C&D waste management for businesses, community and environment." A sponsor presentation was carried out by Torsten Ahr, vice president of Epiroc, representing Epiroc Mining India Ltd.

The day continued with a case story presentation from Jigar Cheda of Edifice Engineering and Joe Birkman of Jet Demolition. Another keynote lecture, "Engineering challenges behind demolition of high-rise structures," was given by Dr. Anil Joseph, Geo Structures, Kochi, India. The day continued with a panel discussion on why demolition companies should decarbonize.

Other first-day highlights included a sponsor presentation from Edifice Engineering, and a key-



IDA Committee members and PDa Editor-in-Chief.



The Epiroc booth in the exhibition area.



The chief guest of the event, K. Subramanian, executive vice chairman, Afcons Infrastructure Ltd.

note lecture from Arun Kumaron the latest updates on BIS Codes in demolition and recycling. Kannan Paulthurai from PK Unique Projects Pvt. Ltd shared an interesting case study that was followed by a sponsor presentation by Ashish Markande from Hilti India Pvt. Ltd. Shriram Matte from Matte Associates described a case study examining challenges in bridge demolition jobs.

A special presentation on laser welding of diamond tools, was given by Arthur Becker, Dr. Fritsch, India. Another special presentation on controlled demolition with right power and diamonds, was given by Johnson Periera from Lissmac. The final keynote lecture, "Offshore structures- decom-



Shriram Matte, Matte & Associates, was elected new chairman of IDA at the convention.



missioning, demolition & restoration," was given by Ramalingam Iyer, followed by a sponsor presentation from Anand Singh from Volvo CE. If this sounds like a lot of presentations, it's because a transit strike scheduled for the next day threatened complicate access to Demtech, resulting in the addition of many Day 2 events to the opening day schedule. Nevertheless, attendees still had plenty of energy to enjoy dinner and cocktails that evening.


The strike had only a small effect on Demtech's second-day attendance, which began with a large panel discussion on the future of demolition in India, moderated Hermansson. The discussion proved to be very popular and brought many interesting questions and ideas on the table.

The day continued with a recap of the event and the introduction of IDA's new slate of officers, headed by incoming chairman, Shriram Matte. Attendees were presented with certificates and mementoes of Demtech 2023, with the final order of business being the singing of India's national anthem, "Jana Gana Mana" ("Thou Art the Ruler of the Minds of All People").

Speaking on behalf of IDA, Ramanathan offered a special thanks to the event's attendees and sponsors. The next event is tentatively scheduled for November 2024 in New Delhi.

www.demtech.in






ANTRAQUIP[®]

CORP

Experienced, Innovative & Reliable


HIGH PERFORMANCE, DELIVERED

ROCK CUTTING



CONCRETE REMOVAL





FOR MORE INFORMATION CONTACT US +1 (301) 665-1165 • www.antraquip.net • info@antraquip.net

THE ULTIMATE DEMOLITION DEMOLITION ATTACHMENT

CONTROLLED DEMOLITION • REINFORCED CONCRETE CUTTING • MAKING THE AQ DEMOLITION SERIES THE ULTIMATE ATTACHMENT



NOT JUST DEMOLITION

It's safety, education, training, and more...



Visit demolitionassociation.com/membership for more information.

ASV Bolsters Attachment Lineup

ASV, an industry-leading brand offering all-purpose and all-season compact track loaders and skid steers, introduces new attachments. The new branded tools include several versatile options for forestry, construction, landscaping and snow clearing. They include a low-flow mulcher, stump grinders, angle brooms, a teleboom, a long floor bucket, a cold planer and a v-blade. The attachments are tested and optimized for ASV machines. Additionally, buyers benefit from the ability to purchase both the attachment and machine from ASV dealers.

Each attachment was chosen and carefully matched to ASV machines for maximum compatibility. ASV backs the attachments with a two-year warranty. Parts and support are available directly through the company.

www.asvi.com



Atlas Copco ZBC Energy Storage System Runs Emission-Free Construction Site in Norway

Atlas Copco's ZBC 250-575 energy storage system has been delivering the necessary energy to reline 1.5 miles (2,400 m) of pipeline at a residential neighborhood near Oslo, Norway.

The power grid available on site would not have been enough to cover the load profile of the worksite, which comprises the daily use of two electric excavators, among other machinery. To make up for that deficit and comply with strict local and national environmental regulations, instead of relying on more traditional diesel-driven alternatives, a battery-based energy storage system manages the energy input provided by the grid and a hydrogen fuel cell, making sure the load demand is covered.

STEG Entreprenør and Hafslund, one of Norway's largest power generators, decided to include Atlas Copco's ZBC energy storage system to solve the challenge posed by the limited grid on site. Not having to pay for fuel, the electricity required to power the equipment has a lower cost, enabling significant savings during operation. In addition, due to their low noise levels, operators can extend the working hours, beginning earlier in the morning and closing later into the night if needed, improving the projects' productivity.

"Having an energy storage system on-site has allowed us to extend the workday and reduce the working week to just four days," says Jan Erik Schanche, project manager for STEG Entreprenør. He adds that while electric machinery is a must for working in Norway's residential areas, "we have discovered that it is also the most profitable approach if you have a steady power supply."

STEG Entreprenør is also employing Atlas Copco's new fast Z Charger to feed the two biggest loads on site - the



electric excavators taking care of the pipe relining. The Z Charger boosts the charging rate by increasing the voltage, so the electric machinery charges quickly. Meanwhile, the energy storage system's ECO Controller™ makes sure there is enough energy to cover these peaks in the demand when it's time to recharge. Making this innovative fast charger part of the solution has increased productivity on site, safeguarding the operational goals and deadlines the end customer had. The Z Charger, with a rated power of 160kW, can charge electric machinery and vehicles seven times faster than an ordinary wall box, and 42 times faster than a regular wall charger.

Although there are quite a few applications for Energy Storage Systems, Atlas Copco's Lithium-ion range is ideally suited for the construction industry. The models are light and compact, taking up only 10 to 20 square feet, and can work with renewable sources of energy, like solar or wind. They can supply power for 12 hours depending on the demand and take only 1.5 hours to recharge. And, in addition to enabling end users to comply with environmental regulations, they offer significant business advantages that translate into a low total cost of ownership.

"Compared to a more traditional worksite, this project is way more sustainable over time," Schanche says. "We are not only eliminating fuel consumption and emissions; having an Atlas Copco energy storage system on-site gives us major energy and economic savings from day one."

In total, by using Atlas Copco's ZBC energy storage system to charge the electric machinery working on site, the ten-month pipe relining project in Kruttkerveien has saved nearly 4,000 gallons (15,100 liters) of fuel and the equivalent of 40 tons of CO₂, compared to the use of regular machinery. That's equivalent to the amount of carbon dioxide absorbed by more than 1,500 trees in one year.

The construction site of tomorrow will consume much less energy than construction sites of the past. Diesel consumption and the associated air pollution will drop significantly as construction companies turn to energy storage solutions. The Scandinavian countries are leading the transformation of the industry, and renewable energies and practical cutting-edge solutions like energy storage systems already play a crucial role in this new reality.

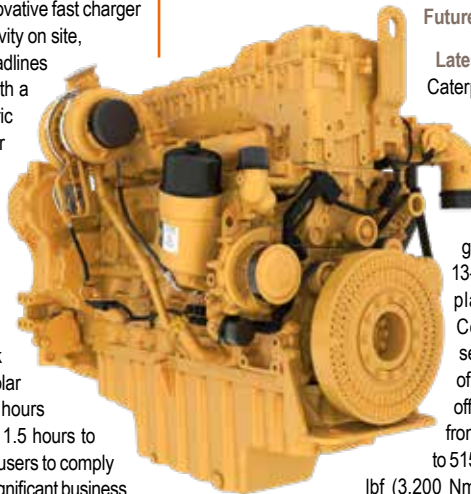
Caterpillar to Develop Hydrogen-Hybrid Power Solution for Off-Highway Vehicles

Caterpillar has announced the launch of a three-year program to demonstrate an advanced hydrogen-hybrid power solution built on its new Cat C13D engine platform. Starting in the first

quarter of 2024, Caterpillar will develop a transient-capable system for off-highway applications. The project will demonstrate how state-of-the-art control systems and electric-hybrid components can help hydrogen-fueled engines meet or exceed the power density and transient performance of traditional diesel engines.

Caterpillar will serve as the prime contractor on the project, providing engine research and development as well as system integration. As the project progresses, other industry and academic collaborators will be brought into the program to provide additional specialist expertise. The initiative will be delivered at Caterpillar facilities in Chillicothe, Ill., and San Antonio, Texas.

With research commencing in 2024, the project is supported and partially funded by the U.S. Department of Energy's Vehicle Technologies Office through the Office of Energy Efficiency and Renewable Energy. It is included among 45 projects across 18 states and Washington, D.C., receiving funding to advance research, development, demonstration, and deployment in several areas critical to reducing greenhouse gas emissions in the transportation sector.



Future Fuel Readiness of Caterpillar's Latest Engine Platform

Caterpillar's hydrogen-hybrid demonstration project leverages the performance, packaging, and fuel flexibility engineered into the new 13-liter Cat C13D engine platform. Unveiled at Conexpo 2023, diesel-powered versions of the Cat C13D engine offer eight power ratings from 456 to 690 hp (340 to 515 kW) with up to 2,360

lbf (3,200 Nm) of peak torque. It provides up to a 20% increase in power and

up to 25% more low-speed torque over the previous generation of Cat diesel engines in its power class. The inline, six-cylinder Cat C13D enables the use of renewable liquid fuels such as 100% HVO, B100 Distilled Biodiesel, and even up to B100 Standard Biodiesel by working with the local Cat dealer. In addition to using hydrogen, its core architecture is designed for the future development of spark-ignited natural-gas capabilities.

Available for early OEM pilots in 2025 and scheduled for production in 2026, the Cat C13D engine is targeted for a wide range of off-highway equipment, including rock crushers, screeners, and grinders; trenchers; agriculture tractors, harvesters, self-propelled sprayers, and woodchippers; material-handling equipment; and large industrial pumps.

www.cat.com

New Material Handlers from Develon

Develon has launched the company's new 24t DX230WMH-7 and 25.6t DX250WMH-7 Stage V compliant material handlers. Both are designed to carry out the toughest tasks across a wide range of material sorting and handling applications such as those in the handling of scrap metal and other solid waste, recycling, demolition and in the forestry industry. As a result, both machines are built with front and rear stabilizers, and a boom and arm specifically designed for material handling tasks.

These new material handlers are equipped with the latest generation Develon 6-cylinder, turbocharged DL06V



water-cooled diesel engine, providing an output of 189 hp (141 kW) at 1900 rpm. Reducing environmental impact is paramount to Develon, so the engine has extremely low emissions as exhaust gases are purified by Selective Catalytic Reduction technology, a diesel oxidation catalyst, and a Diesel Particulate Filter (DPF).

A standard feature is the hydraulic cab riser, which gives the operator better all-around visibility of the attachment and work area. When combined with the rearview camera display in the cab, the operator has excellent visibility of the job site.

A special Develon-developed system, Smart Power Control (SPC), improves machine efficiency while maintaining productivity through variable speed control and pump torque control, automatically adjusting RPMs according to the load being handled. The SPC can be used with all four work modes available on the Develon DX230WMH-7 and DX250WMH-7 material handlers, helping the operator manage the balance of fuel consumption and machine power to the working conditions.

Customers can also choose between straight arm and gooseneck arm configurations, depending on the application and preference. The DX230WMH-7 has been designed for standard loads, while the DX250WMH-7 includes a longer front and an additional 1.2t counterweight to ensure high stability to deal with heavier loads. The wide axle and front/rear outriggers also contribute to the high stability of both machines.

Jetstream of Houston Offers Next Generation of Pump Design

Jetstream of Houston, LLP offers its 5200Q Series UNx™ Bareshaft pump, the next generation of Jetstream pump design. Designed to pair with engines up to 700 hp (522 kW), the 5200Q offers maximum flow capabilities of 25.6 gpm at 40,000 psi (2,758 bar), making it the most advanced and efficient waterblast pump of its size in the industry. With its big water capabilities, high horsepower and UNx technology, the 5200Q Series provides unprecedented power, efficiency and versatility along with maximum uptime to large-scale industrial cleaning operations. Jetstream will highlight the 5200Q and other equipment innovations at World of Concrete booth C3215.

One of the key advantages of the 5200Q Bareshaft pump is the



quintuplex design for reduced pulsation and vibration. With five plungers, pressure spikes are lower, allowing for a more consistent, smoother pressure profile compared to a standard three plunger design. The 5200Q comes with interchangeable UNx fluid end technology, which allows converting lower to maximum pressure in minutes. This provides flexibility to complete all functions on a jobsite and run a full variety of tools with a single unit.

The pump part commonality of the 5200Q Series with its predecessor as well as its simple design — which incorporates fewer overall parts than the competition — makes the machine easier to service. It boasts internal gear reduction, a crankshaft supported by four bearings and a fully integrated precision gear drive with a shared oil sump. When required, maintenance on the 5200Q Series can be completed without the use of any special tools right on the jobsite, reducing downtime for changing out packing, univalves and plungers to just five minutes.

Equipped with a pressurized and filtered oiling system with active cooling as well as a high-temperature and low-pressure shutdown system, the 5200Q Bareshaft pump offers top-tier safety. Additionally, a standard locking rod box cover protects both the operator and equipment while also boosting serviceability and dual rupture discs provide pressure relief protection to prevent injury. The Jetstream 5200Q Series is available as a bareshaft pump or as part of a full integrated trailer waterblast unit.

www.waterblast.com

A Power Duo for Aerated Concrete Planar Elements

With large bricks, walls grow in no time at all, but handling the hundredweight blocks is tedious and also dangerous - if you don't have the right helpers. For the necessary work steps - moving and cutting to size - LISSMAC has two specialists in its range in the form of the LMK 220 mini crane and the MBS 760 masonry band saw, which enhance their capabilities when working together on the construction site.

The LMK 220 grabs the bulky components with its stone gripper and lifts them electrically to a height of 13 ft (4m), where the bulky load can be positioned precisely with a light hand in a working radius of 11.5 ft (3.5m).

The particular strength of the compact mini crane is the rapid moving of medium and large-sized masonry blocks - sand-lime bricks XL (KS XL) and aerated concrete panels (PPE). The stable construction at the tip of the boom can handle a payload of 441 lb (200kg) plus 44 lb (20kg) for the gripping tool. Even under maximum load, the ball bearing slewing ring enables smooth rotation and ensures a long service life.

The slimline LMK 220, which is easy to maneuver, is also useful in confined spaces and on false ceilings with low permissible load-bearing



Perfect combination: Mini Crane LMK 220 with MBS 760 band saw for moving medium/large-sized masonry bricks.

capacities. In addition to its nearly 1t dead weight, there is a 882-lb (400kg) ballast in the form of 16 swiveling weight plates with 55 lb (25kg) each. This means that rust has no chance of weakening the masonry crane, which is designed for the toughest operating conditions. For transport, the LMK 220 can be dismantled into easy-to-transport individual parts with little effort. The hand-operated hydraulic pump is particularly practical, as it helps to assemble and dismantle the tents in a short time and with little effort.

Optimal System Partner: MBS 760 Masonry Band Saw
LISSMAC's smallest mini crane and largest masonry band saw combine to create a productivity booster for masonry work with large-format elements (PPE). On the hook of the LMK 220, the planing elements float safely and accurately onto the robust roller table of the MBS 760, which can handle cutting heights of up to 30 in (760mm) and cutting lengths of up to 27.5 in (700mm). The heavy components can be positioned extremely precisely on the smooth-running roller table for precision cutting. The 1.1 kW 400 V motor provides the power for fast cuts through the large-format stones.

The durable direct drive of the saw band impellers reduces maintenance work and operating costs. Optimally dimensioned saw band rollers guarantee a long service life of the saw band even under continuous load. Thanks to the wheel set, the MBS can be easily moved by one person. The constant and optimal saw blade tension of the saw blade tensioning force automatic ensures the best possible cutting accuracy and at the same time reduces the risk of the saw blade breaking. A quick-release lock opens the saw table with just one hand movement, which speeds up saw blade changes.

www.lissmac.com



An Unprecedented Hydrodemolition Project

The Fort McHenry Tunnel is a unique structure that connects the harborside Locust Point and Canton areas of Baltimore. It stands out because it crosses under the Patapsco River just south of historic Fort McHenry. The four-tube tunnel is a vital link in Interstate 95—the main North-South interstate highway on the East coast—that spans eight lanes and sees more than 100,000 vehicles pass through each day. With large structures like the Fort McHenry Tunnel comes considerable ongoing maintenance. A current project involves removing and replacing two 4-in (101.6mm) conduits buried in a mile-long wall in the ventilation plenum below the roadway. The conduits house 15,000V cable that powers the tunnel facility. The scope of the work also includes 26,000 ft³ (736m³) of concrete rehabilitation to the underside of the roadway slab and side walls supporting it.

Hydrodemolition was specified for the project due to health and safety requirements in the tunnel beneath the river. Dust from impact demolition—such as jackhammering—poses several serious risks. First, flammable material is prohibited and could cause flames to quickly spread in the event of a fire. Second, giant fans force air through the tunnel during traffic jams and emergency situations, such as a car fire. If there was a layer of dust when the fans kicked in, it would cause whiteout conditions with silica-laden dust. These situations could be disastrous for everyone in the tunnel. With hydrodemolition, there is no dust due to using water to remove the concrete.

The Maryland Transportation Authority set out to choose a contractor for what would prove to be a daunting task. The contractor would need to employ Hydrodemolition methods to remove a large amount of material in the ventilation plenum that was a cold, windy, dirty environment. Freyssinet, Inc. was awarded the project with a bid of nearly \$30 million. Freyssinet's portfolio highlights extraordinary projects across several continents. The Fort McHenry Tunnel job stands on its own, however. Not only is the worksite beneath the tunnel roadway in a cold, dirty, wet, environment, but being restricted to working at night throws more obstacles into the mix, such as limited access to the worksite and difficulty obtaining supplies not already on hand. Ceilings of the workspace only stretch around 6 ft (1.8m) tall at their highest point, making powerful but compact equipment a necessity. Campbell formed a fleet of Aquajet machines featuring three Aqua Cutter 410As to tackle the daunting project. With its compact size and electric motor, the 410A is the ideal Hydrodemolition robot for a limited-access, underground setting like the Fort McHenry Tunnel. The 410A's hydraulic and articulated arm features two rotating joints and three extensions that allow the hood to tilt and remove concrete



All photos courtesy of Freyssinet USA.

on the tunnel wall and overhead roadway deck. The 15-man crew uses the Aqua Cutters to remove portions of the wall 30 in (762mm) tall and approximately 12 in (305mm) deep for a total distance of 4 miles to access the cables and conduit. Each shift, they remove about 6 cubic yards (162 cubic feet) of concrete and replace the conduit and rebar each shift. The final step is to finish the repair with shotcrete. Two robots run during the shift while the third is rotated out for maintenance. To get the Aqua Cutters into the worksite, Freyssinet lifted them in with a crane through access hatches into the pump room at the bottom of the tunnel structure. They had to remove the hoods and cutting heads to navigate the narrow passages, stairways and doors with 1 in (25.4mm) of clearance. With the challenges getting equipment in and out of the tunnel, routine maintenance is performed inside the tunnel and can be completed during the shift without affecting production. Crew members are typically spread more than 1,000 feet apart during a shift in the name of safety. The shape of the tunnel creates challenging angles on the work surface. It's a semicircle that turns vertical at the walls with only two short flat spots on each end—like working in a pipe cut in half, creating an angle on which the robots travel. Freyssinet built a rail system to ensure the robots stay on track during operation.

The Key to the Operation

Freyssinet performs hydrodemolition in the tunnel below the roadway during 10-hour overnight shifts, six of which



are dedicated to Hydrodemolition. The other four hours are used to set up, tear down and move the mobile operation. The road is closed during the shift and then reopens to traffic in the morning.

As a result, they must move any equipment positioned on the roadway, including a tool trailer, debris trailer, two high-pressure pumps towed by a semi, a 5,500-gal (20,819-liter) tanker truck, a concrete pump, a 500-gal (1,829-liter) water trailer, four generators, a flatbed truck loaded with concrete and their Aquajet EcoClear water treatment system. The EcoClear is a self-contained unit in a 20-foot Conex container that is mounted on a lowboy trailer. This setup allows the crew to pack up and drive off at the end of each shift. All hoses for the water and power run through 4-in (101.6mm) fresh air vents from the roadway down to the tunnel basement.

Hydrodemolition projects generally require methods of collecting and treating the water used in the process. Throughout the six-hour work shift, the 410As each push out 42 gallons (159 liters) of water per minute. Campbell purchased the EcoClear specifically for this task. The EcoClear features a compact footprint and user-friendly operation and treats wastewater on-site with minimal monitoring.

The Freyssinet crew made a surprising discovery about the EcoClear once they had their system up and running. Their water source stems from the tanker truck. Without recycling water, the crew would use about six tankers per shift, but they're only using about one. This provides not only considerable time savings, but also cost savings in both water and fuel consumption. The EcoClear recycles the water five times during the work shift. Work on the Fort McHenry Tunnel began in April 2021 and has an expected completion date of June 2026.

www.aquajet.se



www.demcon.se

19-20

September, 2024

InfraCity, Stockholm
Sweden



DEMCON 2024[®]



Exclusive Diamond Sponsor



Exclusive Ruby Sponsor

Pentrunder
CONCRETE CUTTING SYSTEMS

Exclusive Platinum Sponsor



Gold Sponsors



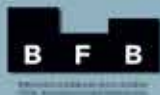
Svenska Demoleringspriset/Swedish Demolition Awards
Anmälan/Application: www.demcon.se



Supported by:

Official Show Magazines

Organizer:



Pentruder MDU3 in the Field: *What's the Impression?*

Pentruder's new MDU3 field tested by the pro Andreas Trönnberg.

Many readers have probably seen Andreas Trönnberg's Facebook posts in the Concrete Cutting Nutters Association (CCNA) and other groups about different jobs he has done. Trönnberg, who joined the Swedish concrete cutting company Göteborgs Hålmetod in 2016, was already well-known in the industry. He started when he was only 15, as school wasn't really his thing. Figuring out new solutions and solving problems soon became a passion.

"I loved the fact that no project was the same and I realized soon that even if it's hard work, you need to do it with some finesse to be both effective and develop your skills," Trönnberg explains. "Let's just say I spent my fair share of hours learning from others and the experiences they've shared, both online and out on the field. Now, after almost 20 years, I have reached the point where I'm the one sharing my experiences in hope that others might also learn from the jobs I've done."

Over the years, Göteborgs Hålmetod has taken on a lot of high precision cutting and drilling projects and this has become one of its strengths. The company uses several brands of gear in the workshop, from smaller to bigger machines, but the way it has made good use of the Pentruder Core drills stands out. The Pentruder MD1 heavy duty core drill, both with hydraulic and electric feed is the company's go-to machine for bigger and tougher jobs, and the "NTGRA MDU" is the first option when many holes have to be drilled fast.

With a new Pentruder core drill planned to hit the market in mid-2024, Trönnberg was the obvious person to test the new MDU3 in the field. And the invitation to take part was too good to pass up.

"I absolutely love the old MDU NTGRA and there is no other machine that has ever been able to compete with it according to me," Trönnberg says. "To get the chance to test the new Pentruder MDU3 and see what it's capable of was like asking a kid if he wants to meet Santa at Christmas."

The new MDU3 means three different machines

The MDU3 is actually three different machines within the new Pentruder HFI core drill generation. The MDU3-30 is for core bits up to 11.8 in (300mm) with a 200-1,800 rpm range, and 44.3 lbf (60Nm); MDU3-60 is for core bits up to 23.6 in (600mm) with a 100-900 rpm range and 88.5 lbf (120Nm); and the MDU3-100 is for core bits up to 39.4 in (1,000mm) with a 50-450 rpm range and 147.5 lbf (200Nm).



"We know that the previous MDU NTGRA was very well liked among our Pentruder users," says Pentruder marketing communications director Elin Skantz. "However, we had quality issues with parts from one of our key suppliers of motor drives and therefore that machine couldn't live up to our quality standards and we had to stop selling it."

Skantz adds that since sales of MDU NTGRA ended, there has been a high demand from customers for a replacement. "We have been working hard for years with the development of the HFI-system with the RS2 wall saw being the first machine in the new platform," she says. "We knew from the beginning of the MDU3 project what sort of machine we wanted to develop, and after a close collaboration between our designers and engineers we are now able to launch three MDU3 core drilling machines at once."

The drill rig for the MDU3 is based on the same tracks as for the Pentruder wall saws. Together with the BTS-4 base plate, it is a very sturdy yet easy to mount system. The TStrack system also offers a wide variation of core drilling accessories for stitch or line drilling, a pivoting head, angle feet, and other features.

"This is it!"

The test took place on a cold and snowy morning in November at old hydroelectric plant undergoing renovation outside the Swedish city of Borlänge, where all Pentruder machines are designed, produced, and assembled. Here, concrete is old and full of aggregate. Drilling was undertaken both manually and with the auto feed, as well as with small and larger drill bits.

Although the Pentruder team cautioned Trönnberg that certain features such as the auto-feed, software and carriage had yet to be finalized, he was not disappointed in the least. "Let's just say it cuts like a warm knife through



butter," he says. Indeed, he adds, the MDU3 behaves a lot like the older hydraulic core drills, but with the advantages of modern technology and with the power of a proper HF motor

"It reacts instantly on whatever the drill encounters in the concrete, yet the reactions are very soft," he says. "I love the new display that shows the cutting performance, depth, and how much power the motor is using, which means that in the future I can choose the best suitable segments for the drill bit on tougher jobs."

The machine software shows great promise as well. "You can set the desired cutting depth, turn on the water, press play and then just sit back and watch the MDU3 do the work," he adds. "And when it has reached the set depth, it stops and starts pulling out. These new features together with the fact that you can use the same tracks for drilling and wall sawing, and the range of different drilling accessories, is a dream combination." In sum, Trönnberg says the MDU3 will be "the machine" for any core drilling challenge.

"It won't matter if it's a normal-sized hole, hundreds of holes being drilled in a line, or an unusually hole," he says. "Just rig it up and trust the machine. The need for other core drills will disappear with this machine!"

www.pentruder.com

Selective Deconstruction in the City Center

When something new is to be built, sometimes the old has to give way. Such was the case in Dingolfing, just northeast of Munich, Germany. There, a school building in the city center was to be expanded, requiring demolition of an adjacent, aging dormitory. Although plans originally called for contractor Karl Mossandl GmbH & Co. to raze the structure over two weeks, a Sennebogen 830 E demolition machine completed the task in a matter of days.

The 830 E was exactly the

right machine for job, beginning with its 59-ft (18m) reach, which can be swiveled 360° to avoid having to frequently reposition the machine.

The quick-change system for attachments allows the operator to quickly change attachments with the push of a button. The telescopic crawler

undercarriage with a track width of 12.5 ft (3.8m),

could be telescoped at the push of a button, providing optimum stability through the job, especially on uneven ground. And, the elevating cab, which can be tilted up to 30°, allowed a clear view of the demolition site, plus plenty of space for freedom of movement. The 830 E also features an environmentally friendly drive technology, and easily accessible service points, making maintenance a breeze.

Expediting the demolition gave the contractor a head-start on constructing a new three-story building with a partial basement, plus valuable experience with a highly advanced, efficient demolition machine.

www.sennebogen.com



ZENESIS

WORLD'S MOST ADVANCED
PATTERNED DIAMOND TECHNOLOGY

DESIGN
YOUR OWN
PERFORMANCE

□ DYNAMIC □ COMFORT



EHWA DIAMOND IND.CO.LTD. www.ehwadia.com | salesinfo@ehwadia.co.kr | Tel 82 31 370 9300 Fax 82 31 370 9191



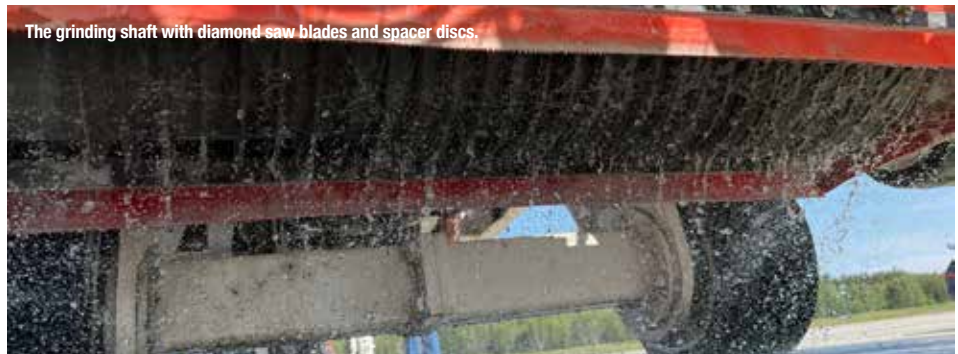
Diamond Products PC1505XL Grinder & Groover Clears a Runway for Takeoff



The PC1505XL Grinder & Groover.



The grinding shaft with diamond saw blades and spacer discs.



In a tightly scheduled project in the summer of 2023, a section of runway at Ingolstadt Manching Airport was grooved to improve the drainage of rainwater and prevent aquaplaning. These grooves are precisely defined in terms of width, depth and spacing.

The contractor chose Diamond Products' new PC1505XL Grinder & Groover for the job. Designed with a 50-in (1,275mm) grinding shaft, the machine is perfect for grooving as well as grinding and bump cutting. Tyrolit BGX-C3 diamond saw blades with a diameter of 11.8 in (300mm) and a segment

width of .25 in (6.5mm) were mounted on the grinding shaft of the machine. The specification chosen for this project was. Steel spacers with a width of 1.3 in (33.4mm) were mounted between the saw blades to ultimately ensure the necessary distance between the segments and to keep the groove width at the required distance.

On the grooving shaft of the machine, the cutting blades were mounted in such a way that each 20-ft (6m) field could be processed in five passes, with the grooves reaching up to approximately 6 in (15cm) towards the traverse joints. After a

short grinding-in phase of the new saw blades, the feed rate of the machine was increased to 12.39 ft (12 m) per minute. This allowed the entire 710,400-ft² (66,000m²) section to be ground in just 19 days.

The grinding pattern and the edges of the grooves turned out to be excellent. The powerful machine-integrated extraction system of the PC1505XL extracted almost all concrete slurry produced and the residues were then disposed of in accordance with the regulations.

www.tyrolit.com



The grinding shaft with diamond saw blades and spacer discs.



The final ground area.



The final grooves for improved drainage.

Best Results in Floor Grinding and Prep

Tyrolit is setting new standards in floor grinding and floor prep with its in-house range of tools and machines for this field of application. In mid-October 2023, the old winepress room in Bächlingen, Germany, was the scene of a comprehensive floor renovation, in which a large part of the Tyrolit floor grinding range was used, showing best results.



The winepress room dates back to 1766, and is frequently used for various community events as well as for celebrations and weddings. To provide a low-maintenance floor for the building, and the existing floor was reconditioned in a total of seven grinding processes with diamond tools in different grit sizes. After three rough grinding steps, existing cracks were filled and, subsequently, the floor was fine grinded and polished in another four steps. As a final step, the floor was impregnated to optimally withstand future loads and to ensure easy cleaning.

The old floor consisted of different surfaces and materials, was very uneven and had cracks in some places, which



basically turned out to be the biggest challenge of the project. Nevertheless, the Tyrolit team was able to complete the work within the planned time frame without any problems. The result was convincing all along the line and also the mayor was very satisfied with the final floor.

The Tyrolit assortment for floor grinding and floor prep is comprehensive—from floor grinders, extraction systems, and strippers to shot blasters and milling machines. The range is complemented by a wide selection of perfectly matched diamond tools, including metal-bond grinding shoes for floors with different degrees of hardness, as well as resin- and ceramic-bond grinding and polishing tools. Chemicals for repairing and finishing floors, various sealers and fillers round off the assortment.

Tyrolit floor grinding machines are currently available for grinding widths between 11 and 30.7 in (280 and 780 mm). Special highlights are the powerful FGE515 and FGE780 floor grinders, both of which feature an innovative gear concept for maximum productivity. While the FGE515 impresses with its compact design and dismantlable machine parts, the FGE780 is a self-propelled, professional machine with a water tank and a dust extraction system that can be operated easily and intuitively via remote control.

Both floor grinders were used for the renovation in Bächlingen. Along the walls, the floor was additionally grinded with the compact FGE280 floor grinder, as well as by hand with the in-house angle grinders and corresponding diamond tools from Tyrolit.

www.tyrolit.com





TURBO COREDRILLS

ADVANCED POSITIONED TECHNOLOGY

Turbo B



Turbo B



The bullet segment, proven in soft to medium aggregates with uncompromising speed on a long life bit.

Turbo S G3



Turbo S G3



With the same aggressive design as the G2, this bond is slightly harder, providing increased life in more abrasive materials, whilst maintaining high drilling speed.

Turbo S G4



Turbo S G4



Our flagship segment achieving unrivalled performance in almost every type of reinforced concrete. This aggressive design segment is fast becoming first choice for professional drillers.

Turbo S G7



Turbo S G7



Our latest segment, launched to compliment our range of cores, offering great speed in heavy steel drilling applications.

Over 3000 tubes in stock in our USA depots from 1/2" to 60" in lengths up to 10ft!
Over 15,000 tubes in stock in our UK depot from 12mm to 1500mm in lengths up to 3000mm!

DYMATEC

SPECIALIST PRODUCTS FOR DIAMOND DRILLING & SAWING

01582 599 933
sales@dymatecuk.com
www.dymatecuk.com

866 734 1871
sales@dymatecusa.com
www.dymatecusa.com

Yanmar Celebrates 30 Years of Zero Tail Swing Excavators

The launch 30 years ago of the Yanmar CE ViO range of compact excavators caused a sensation. Unlike other excavators of its kind at the time, ViO could fully rotate without the rear of the cab/superstructure extending beyond its tracks. This meant that the machines could operate in the tightest of spaces without fear of a rear collision with nearby buildings, vehicles, or people. The concept was embraced by the global industry and soon displaced as much as 70% of the standard models on worksites.

Collectively, many thousands of collisions and accidents have been avoided, and work in the tightest of spots been made possible – all thanks to the launch of Yanmar CE's ViO range.

The zero tail swing concept is much cleverer than just shrinking the size of the superstructure. In traditional excavators, having a protruding counterweight at the rear of the excavator is useful in balancing loads at the front, when lifting or digging, for example. But with this removed, engineers at Yanmar CE needed to create similar counterweight forces by other means, while still maintaining impressive lift capacity.

The result is an incredibly versatile machine that is able to work in the tightest and narrowest of jobsites. Now in its 7th generation, the ViO range has both consistently evolved over the last 30 years. The ViO17 is a good example of the current breed. Neither the counterweight, nor the front part of the upper frame extend beyond the track width, giving the 2t model an extremely tight turning radius. And yet, thanks to its 4.16-ft (128cm) wide undercarriage, large counterweight, and good weight distribution, it equals or surpasses conventional machines, as well as having great lifting capabilities.

As proof of the ViO range's continual improvement, the ViO80-7 model (distributed exclusively in Japan) received the prestigious Good Design Award for 2023 from the Japan Institute of Design Promotion.

www.yanmar.com



Antraquip Attachments Help Rehabilitate New York Canal Lock

Antraquip, a US based manufacturer of mechanised rock and concrete cutting equipment, has recently supplied three AQ-5 drum cutters to one of its most longstanding customers in northern New York State. Although this contractor has performed many demolition jobs using Antraquip cutters over the years, this project was a unique challenge. For the project, the contractor was on a particularly tight timeline to complete the controlled demolition of a wall within a lock which would need to reopen by spring to allow large ships to pass through the vital waterway to access the major cities in the Northeastern part of the US and Canada. The customer mounted the AQ-5s on Cat 349 excavators that were positioned on barges from where they would grind the concrete down to a depth of up to 1m. This concrete was not your normal weathered concrete commonly seen on lock and dam rehab jobs, but instead had a hardness of 55MPa with steel support imbedded within the concrete. As the machines worked their way down, the water level was dropped in order to access the deeper areas of the lock. The project required operation of the three



machines around the clock despite brutal weather conditions with temperatures dropping to as low as -34°. Nevertheless, the entire project was completed well ahead of schedule in less than one month. The use of Antraquip drum cutters was the ideal option for a project like this as the AQ-5s provided the perfect combination of high productivity and precision while eliminating the possibility of over breaking or microfracturing that could damage the integrity of the lock walls.

www.antraquip.net



Epiroc to Acquire Black & Decker's Stanley Infrastructure

Swedish construction manufacturer Epiroc has agreed to acquire Stanley Infrastructure, a global manufacturer of excavator attachments and handheld hydraulic tools, from Stanley Black & Decker, Inc. The strategic acquisition will strengthen Epiroc's presence in the attachments business in infrastructure and construction, especially in the U.S.

Based in Milwaukie, Ore., Stanley Infrastructure designs, manufactures, and sells attachments, typically used on excavators and handheld hydraulic and battery-powered tools for applications in infrastructure, construction, scrap recycling, demolition, and railroad infrastructure. Its brands include LaBounty, Paladin, Pengo, and Dubuis. With nearly 1,400 employees, Stanley Infrastructure has 10 key production facilities, in the U.S., Canada, France, and China. The vast majority of its revenues are generated in North America.

"We are very excited about this strategic acquisition, which is a major step to strengthen our long-term presence in the infrastructure and construction industries," says Epiroc president and CEO Helena Hedblom. "Stanley Infrastructure

has industry-leading products, services and solutions with renowned brands, solid customer relationships, and a strong people culture, which all makes this a perfect fit for Epiroc.

Hedblom adds that the two organizations' product portfolios complement each other very well. In addition to filling important gaps in Epiroc's current offering, "we gain access to a broad indirect sales network, which will further diversify and strengthen our footprint."

Pending completion of routine regulatory filings, the acquisition is expected to be completed in the first quarter of 2024, after which Stanley Infrastructure will become part of Epiroc's Tools & Attachments division.

"Customers will benefit from having access to a more complete product portfolio, which, we together will continue to develop to meet customers' increasing need for versatility and productivity," says division president Goran Popovski. "We look forward to welcoming the great team at Stanley Infrastructure to the Epiroc Group, and to grow successfully together."

www.stanleyinfrastructure.com



Pentruder[®]

RS2

**Are you going to
World of Concrete?**

**You will find Pentruder
in booth 031668 at
the silver lot**

24 HP AND LESS THAN 55 LB

Revolutionary one-of-a-kind integrated motors

Efficient slip clutches for all motors

Integrated 24 hp drive motor

Two integrated brush less feed motors; one for the saw arm rotation and one for traveling along the track

Both feed motors can be used at the same time

Designed with the customer in mind

The Pentruder RS2 saw head weighs less than 55 pounds

Waterproof, IP65

Blade rotation in both directions

Shorter setup times

Quick disconnect coupling for blade

Easy fitting of blade

Same track system as all other Pentruder machines

Highest stability and best handling

Easy assembly of saw on track

Same track feet mounting distance as for the HF-saws

One connector and cable only

Only standard hand tools needed for maintenance

Pentpak 3

Waterproof, IP64

Highest EMC level

Light weight, easy to fit blade guard

Best protection and handling





THE CRUSHER BUCKET FOR YOUR EXCAVATOR



JAW CRUSHER FOR EXCAVATORS.

When installed on your excavator, it crushes any type of inert material.



FOR EXCAVATORS,
BACKHOES, LOADERS
AND SKID STEERS

9,920 - 220,460 lb



REDUCE >> REUSE >> RECYCLE