

Volume 8 • Issue 2
May 2021 - June 2021

SHOW ISSUE



Your Gateway to North, Central and South America

Editorial

Rethinking Life in the
"Newer Normal"

page 4

Associations

NDA To Hold Risk
Management Course at
World of Concrete in June

page 6

Business

AED Praises "American
Jobs Plan"

page 6

News

Epiroc to Acquire
South Korean
Hydraulic Breaker
Manufacturer

page 41

News

Brokk Relocates
Washington State
Facility for Increased
Service

page 42

Feature

Break(er) Time

pages 12-14

Feature

Big Toys for Lockdown Boys

pages 22-25

Feature

The Expanding World
of Crushing and
Screening Equipment

pages 30-34

Site Reports

Seattle
Structure Revamp

pages 16-17

Reports

Rise of the Machines

pages 19-20

Shows

**WOC's Coming
Back to Vegas!**

pages 36-39

Attachment Manufacturers Choose To Kick Butt, Not the Bucket, pages 27-29

IS CORING REINFORCED CONCRETE

DRY

A PROBLEM?

MAXIMA CAN SOLVE IT



OFFICIAL PARTNER

www.maxima-dia.com



Professional Demolition Americas Magazine

Postal address:
Riverbends Publishing, LLC, PDa Magazine,
P.O. Box 552, Nokesville, VA 20182, USA

Phone: +1 703 392 0150

E-mail Editorial Office:
editorial@pdamericas.com

Web Site:
www.pdamericas.com

ISSN Registration: ISSN 1650-979X

EDITORIAL STAFF

Senior Editor: Jim Parsons
jim.parsons@pdamericas.com

Editor-in-Chief: Jan Hermansson
jan.hermansson@pdamericas.com

Assisting Editor-in-Chief
Anita do Rocio Hermansson
anita.hermansson@pdamericas.com

Editor North America: Jim Parsons
jim.parsons@pdamericas.com

Editor South America: Luiz Carlos Beraldo
luizcarlosberaldo@gmail.com

Junior Editors: André Hermansson
andre@pdworld.com

Vitor Hermansson
vitor@pdworld.com

CORRESPONDENTS

Andrei Bushmarin
andrei.bushmarin@pdworld.com

Mikael Karlsson
mikael.karlsson@pdworld.com

SALES

Sales Director North & America
Andrei Bushmarin
Phone: +7 921 949 27 81
andrei.bushmarin@pdworld.com

Sales Director North America
André Hermansson
Phone: +46 70 979 04 03
andre@pdworld.com

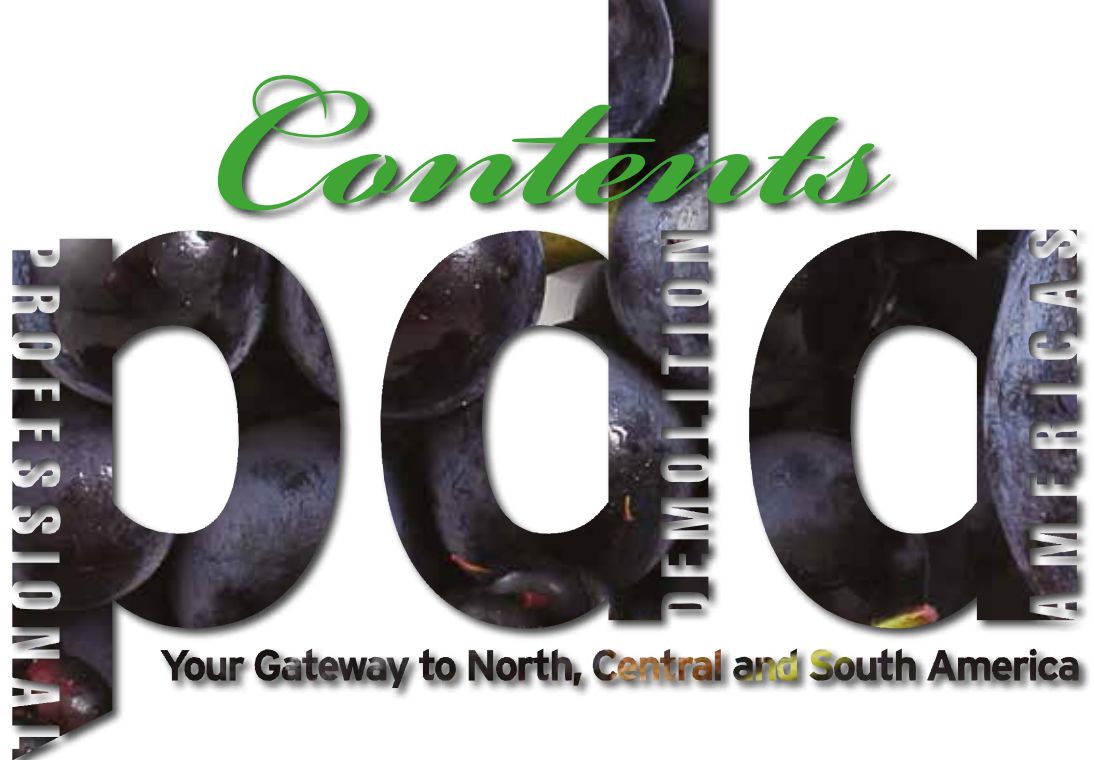
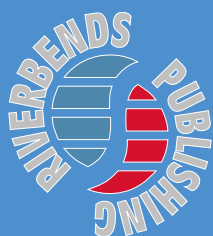
Sales South America
Eduardo Kubrick
Phone: +55 11 999494544
eduardo.kubrick@pdamericas.com

Sales Europe and rest of the world
Phone: +46 8 585 700 46
sales@pdamericas.com

Publisher
Jan Hermansson

Cover Picture:
Las Vegas © Dreamstime.

The magazine PDa, Professional Demolition Americas is published four times per year in North and South America. The annual airmail subscription rate is US\$ 45. All subscription correspondence should be directed to: The subscription department, Riverbends Publishing, LLC, P.O. Box 552, Nokesville, VA 20182, USA. Or sent by e-mail to info@pdamericas.com. PDa is mailed by second class postage. ©Copyright Riverbends Publishing, LLC, 2013-2020. Printed in the US.



Your Gateway to North, Central and South America

4	<i>Editorial</i> Rethinking Life in the "Newer Normal"	40	<i>News</i> Demolition Attachment Tooth-Wear Templates Can Aid in Preventive Maintenance	12	<i>Feature</i> Break(er) Time
6	<i>Associations</i> NDA To Hold Risk Management Course at World of Concrete in June		GEM Attachments Joins VTN's Americas Distributor Network	22	Big Toys for Lockdown Boys
6	<i>Business</i> AED Praises "American Jobs Plan"	41	New Lavina Elite Dust Extractors from Superabrasive	27	Attachment Manufacturers Choose To Kick Butt, Not the Bucket
8	Events Calendar		Hilti Innovations Honored	30	The Expanding World of Crushing and Screening Equipment
	Genesis Co-Founder Curt Frahm Inducted into National Demolition Association Hall of Fame	42	How Long Does it Take to Break a Habit?	15	<i>Site Reports</i> Mantovanibenne's SH700R Eagle II Shear Demolishes a Power Plant in Germany
	Bob Doll Joins Durex Products as Regional Sales Manager		Epiroc to Acquire South Korean Hydraulic Breaker Manufacturer		Antraquip Drum Cutters Make Quick Work of Lock Enlargement Project in Northeastern USA
10	<i>News</i> Power Meets Portability in New McCloskey I4C Compact Impact Crusher		Blount, Inc Rebrand as Oregon Tool	16	Seattle Structure Revamp
	Terex Trucks to Expand its Footprint in Canada		Brokk Relocates Washington State Facility for Increased Service	19	<i>Reports</i> Rise of the Machines
			MB Crusher Introduces MB-HDS523 Shafts Screener	36	<i>Shows</i> WOC's Coming Back to Vegas

Rethinking Life in the "Newer Normal"

"Life moves pretty fast. If you don't stop and look around once in a while, you could miss it."

Most readers of that proverbial "certain age" will recognize this line from the movie, "Ferris Bueller's Day Off." Released 35 years ago this month (yow!), the very-80's movie still retains its power to lure even the most dedicated of us into playing hooky for a day, though likely in a car somewhat humbler than the classic Ferrari 250 GT California that served as the escape vehicle for Ferris and his pals (not to mention the parking garage employees, who had their own day off).

Now, with the pandemic's disruptive grip on daily life easing in most parts of the country, many people are understandably hungry to "get back to normal" as quickly as possible, even if that means keeping a mask within easy reach, or another person at a still-socially comfortable distance.

Indeed, after so many months of the "new normal," who'd have thought a humdrum 8-to-5 routine would be so alluring, and so welcome!

But while many contractors did manage to stay active throughout the pandemic, there might be a temptation to fast-forward through the transition to a "newer normal" that retains a few too many habits of old one, i.e., spending long hours on the job or foregoing breaks and learning activities for the sake of getting even more done. Yes, it will be great to be busy again, but will we also welcome the stresses and complaints that come along with it?

Many lessons have come out of the last 18 or so months, from our resiliency and ability to adapt to change (albeit begrudgingly sometimes) to a renewed appreciation of what it means to actually live. Maybe that

view afforded by the emptier roads and less-stressed schedules of last year wasn't that bad. And if there were some shortcomings in our lives, perhaps they really are overdue for some attention and improvement.

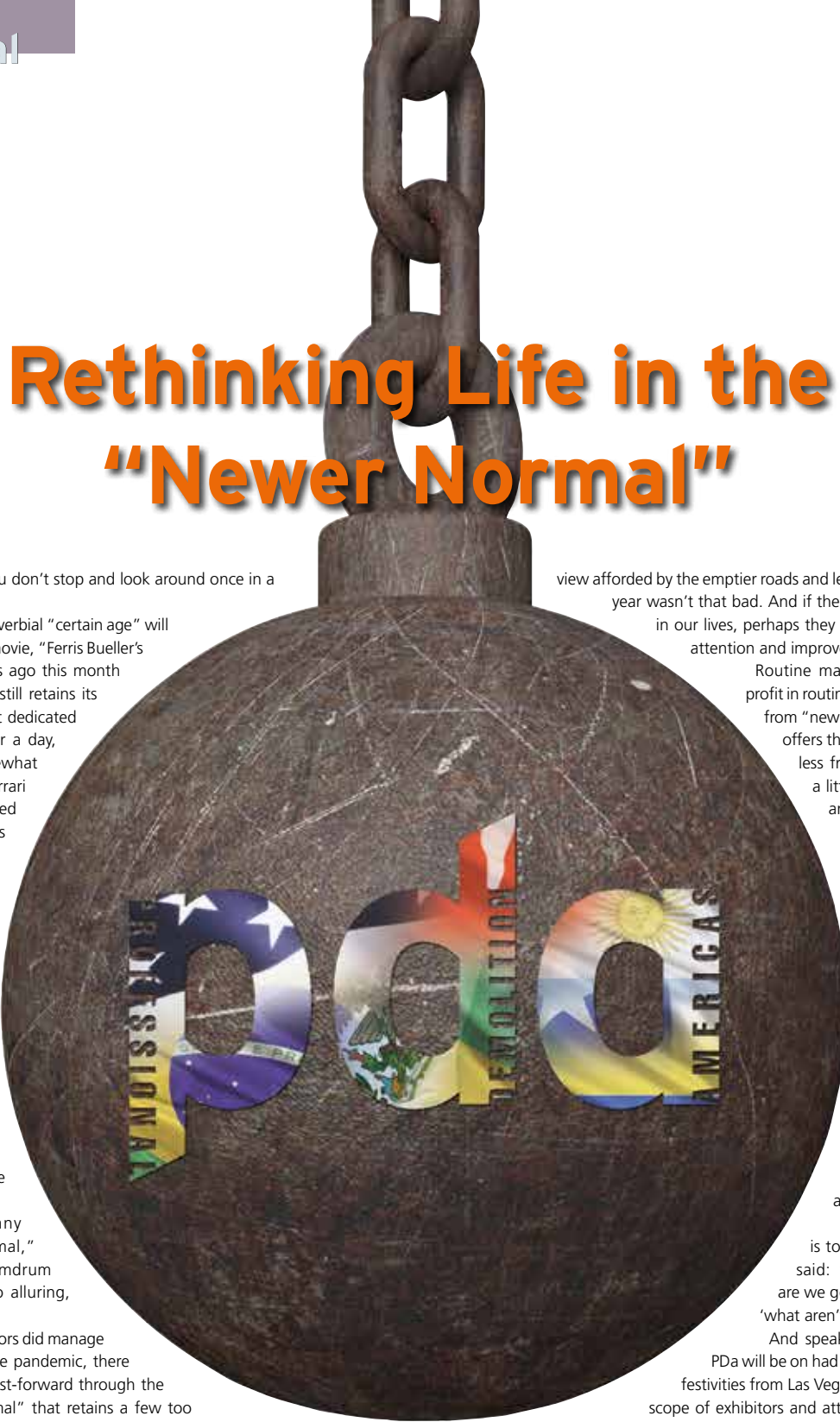
Routine may bring both comfort and profit in routine, but perhaps the transition from "new normal" to "newer normal" offers the chance to make life a little less frantic, a little healthier, and a little more open to new ideas and spontaneity...like playing hooky and seeing what's out there (as long as we're not shirking those promised deadlines and responsibilities, of course).

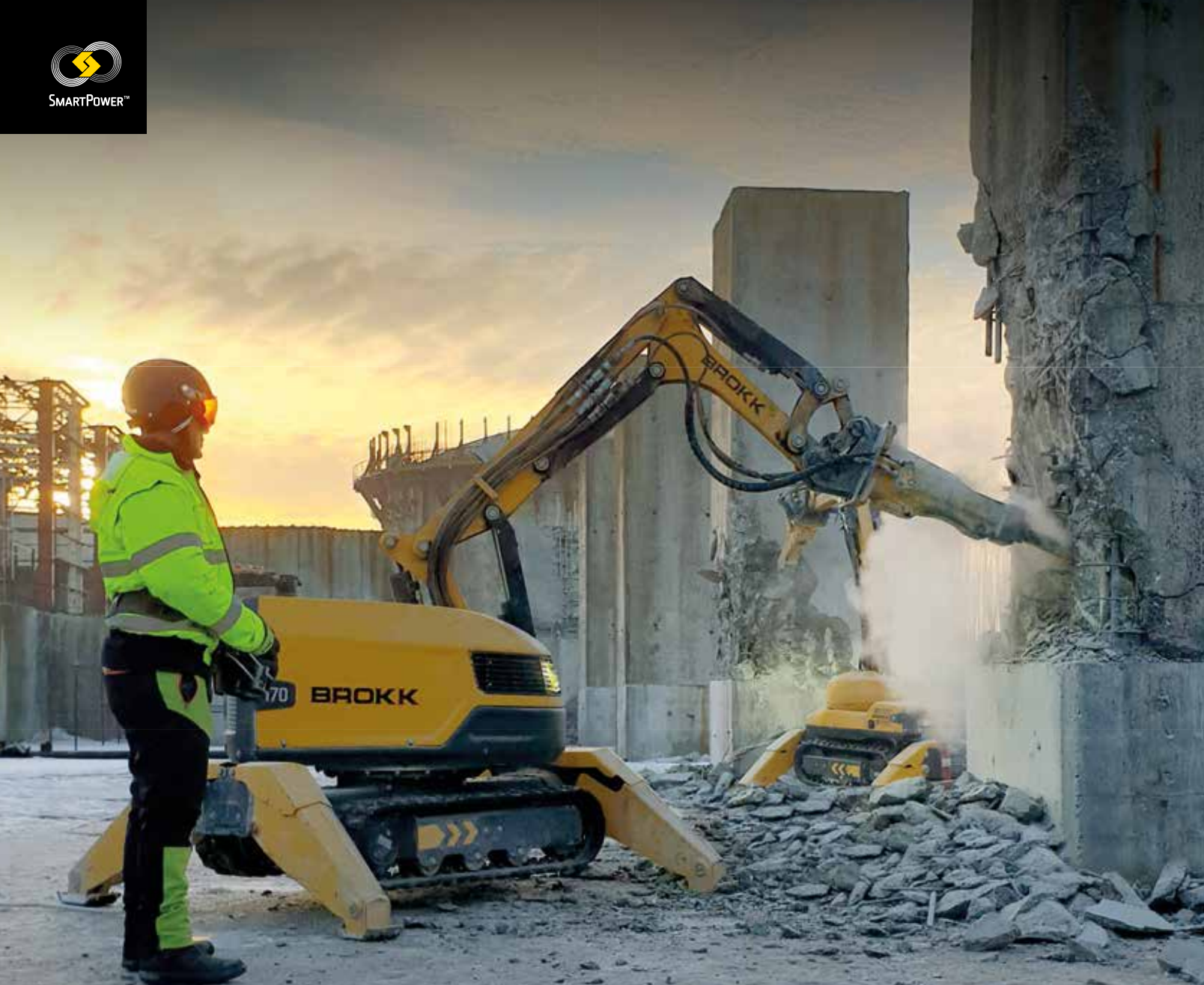
So as we get ready for a summer unlike any other—from overdue reunions to a scaled-down, solstice-hugging World of Concrete show—let's be sure to set aside time to stop and truly look around and consider all the other things that comes with life and simply being here.

A good way to get started is to remember what Ferris also said: "The question isn't 'what are we going to do?' The question is 'what aren't we going to do?'"

And speaking of World of Concrete, PDa will be on hand to report on all three days of festivities from Las Vegas. Though the number and scope of exhibitors and attendees may be down from previous years, there is sure to be plenty of equipment to see and try out, stories to share, and surprises that might not stand out during a "normal" show. (But then, "the newer normal" is still a work in progress.) Hope to see you there!

Jim Parsons, Senior Editor
jim.parsons@pdamericas.com





OUR KIND OF PLAYGROUND

This is the natural habitat for Brokk's compact giants. With the perfect combination of power, operability and accessibility our demolition robots provide efficient solutions to increase profits.



See us at
booth W703

BROKK®

Brokk Inc. | Monroe, WA | 1-360-794-1277 | info@brokkinc.com | www.brokk.com/us



PDa Magazine is pleased to present regular updates from the US National Demolition Association. This column comes from NDA Executive Director Jeff Lambert.

NDA To Hold Risk Management Course at World of Concrete in June

In conjunction with World of Concrete, NDA will hold the Foundations of Demolition - Risk Management Course, June 10th in Las Vegas. I hope you are reading this issue at World of Concrete and enjoying the construction industries first major conference since the beginning of the pandemic.

This spring, NDA hosted virtual versions of its Foundations of Demolition courses on Project Management and Job Cost. The courses had great participation, with approximately 40 registrants each. The Superintendent Course will be presented virtually June 16-17.

The Certification Board of NDA (CBN) held its kick-off and follow-up meetings in March and April and plans to meet this summer in Chicago to begin Job Task Analysis. NDA plans to launch its certification program in 2022. Stay tuned for more information. In the meantime, if you have not done so, please register your staff and colleagues for the Risk Management and Boot Camp training.

On March 31, President Joe Biden introduced the American Jobs Plan, which outlines broad proposals to overhaul the nation's infrastructure, as well as proposals to change the U.S. tax code. This plan was crafted as a starting point for negotiations in Congress. In response, NDA sent letters to the House Committee on Transportation and Infrastructure and the Senate Committee on Environment and Public Works alerting them to elements of the plan NDA believes should receive Congressional support. NDA will stay in regular communication with Congress on infrastructure policy, and provide members updates on the latest developments.

NDA also has created a grassroots alert where members can contact their legislators in support of NDA's infrastructure priorities.

Stay tuned for more information on the NDA OSHA Alliance. We will issue a press release once the Alliance has been formalized.

In the next episode of our podcast, now for download, our guests include NDA partner Affinity HR Group's Claudia St. John on potential HR effects from the Biden administration; Jose Blanco, Secretary-General for the European Demolition Association (EDA) on what the industry in Europe has learned from the pandemic; and NDA's Director of Government Affairs Kevin McKenney, who discusses the Biden infrastructure plan.

NDA's Bill More and David Sinclair represented our organization on an EDA webinar on disaster relief, May 19th. I hope you had a chance to participate.

With all that has been going on with the industry and at the NDA, if you are not a member of our community of dedicated demolition professionals I invite you to join us today!

NDA has added a variety of new resources, training programs and other benefits to help you win work and keep your business moving. NDA offers many year-round benefits that help contractors stay relevant in the industry, and build relationships that advance business. Your membership provides access to safety resources, demolition best practices, educational content, a company listing in our public Membership Directory and so much more! Contact me directly to learn more about membership: jlambert@demolitionassociation.com. You can also apply online under the Membership section of demolitionassociation.com.

Jeff Lambert
Executive Director

www.demolitionassociation.org

AED Praises "American Jobs Plan"

Associated Equipment Distributors' (AED) President & CEO Brian P. McGuire commended President Biden for the American Jobs Plan, an infrastructure package framework released March 31. McGuire called the proposal "a bold plan to rebuild the nation's physical infrastructure, including investments in roads, bridges, highways, broadband, ports, water systems and other projects."

McGuire noted that the nation's infrastructure has suffered from many years of underfunding.

"The time is long overdue for the federal government to provide the investments needed to restore the nation's infrastructure to the envy of the world," he said. "There is no better way to put the United States on the path to long-term economic growth and job creation than investments in transportation, water, telecommunications and energy infrastructure."

Key components of the American Jobs Plan include:

- \$621 billion for transportation, including roads, bridges, transit, ports and airports as well as electrifying vehicles.
- \$111 billion to upgrade drinking and waste water infrastructure.
- \$100 billion for high-speed broadband infrastructure.
- \$100 billion to upgrade the U.S. power infrastructure.
- \$213 billion to "produce, preserve, and retrofit affordable and sustainable places to live."
- \$137 billion for physical upgrades to public schools, community colleges, child-care facilities, VA hospitals and federal buildings.
- \$300 billion to invest in U.S. manufacturing and strengthen critical supply chains.
- \$100 billion for workforce development and jobs training programs.
- \$400 billion for "expanding access to quality, affordable home- or community-based care for aging relatives and people with disabilities."

The administration is proposing to pay-for the American Jobs Plan through a variety of tax changes targeted to corporations, including increasing the corporate rate to 28 percent; creating a 15 percent minimum tax on the income corporations use to report their profits to investors (book income); eliminating tax preferences for the fossil fuel industry; greater tax liability on U.S. multinational corporations; and more robust IRS tax enforcement. Ultimately, it will be up to lawmakers in Congress to draft legislation and settle on funding mechanisms. Nevertheless, McGuire urged Congress to "proceed expeditiously and in a bipartisan manner" on the proposal.

"AED looks forward to working with the Biden-Harris administration and lawmakers from both sides of the aisle to enact much-needed infrastructure investments, and to identify responsible ways to pay for the proposal without sacrificing America's

productivity and international competitiveness," he said.

www.aednet.org

AEM Invites Nominations for 2021 Hall of Fame Class

The Association of Equipment Manufacturers (AEM) Hall of Fame recognizes the pioneers whose inventions, ideas, leadership, and courage have contributed to the industry and our community's quality of life. Since 1993, the AEM Hall of Fame (formerly CIMA Hall of Fame) has honored pioneering individuals who invented, managed, built and led the off-road equipment industry that builds and feeds our world, recognizing everyone from the inventor of the steam shovel to the woman who led one of the world's most notable equipment manufacturers to successfully take care of its people while improving its profits. Anyone in the equipment manufacturing industry or the wider public can submit a nomination. AEM seeks to recognize those who exemplify innovation, industry contributions, leadership, and social responsibility, in the equipment manufacturing industry. Last year's AEM Hall of Fame inductees include Art Moore, founder of Snorkel Lifts, and brothers Ray and Koop Ferwerda, inventors of the Gradall hydraulic excavator. For 2021, AEM is expanding the traditional idea of a Hall of Fame member and looking to recognize contributions to our industry from more diverse corners of the equipment manufacturing world including those from different roles and positions, as well as from smaller manufacturers.

"The AEM Hall of Fame is a collection of individuals who made the industry that made modern America possible," says AEM President Dennis Slater. "We look forward to celebrating the next innovator-leader as selected by our independent panel."

Nominations are open until June 11, 2021 and can be submitted via AEM's website.

www.aem.org



CCNA welcomes additional Admin to the Facebook Group

Concrete Cutting Nutters Association (CCNA) welcomes additional Admin Talisha Bryan to their Facebook group. Talisha works as a concrete cutter at Greene's Inc Concrete Cutting & Drilling in Salt Lake City, Utah, USA.

AQUAJET

NEED TO GET A CONCRETE REPAIR PROJECT DONE FAST?

A Hydrodemolition robot can
complete the job **25x faster**
than jackhammers.



See us with Brokk
at booth W703



Distributed by:

Brokk Inc. | Monroe, WA | 1-360-794-1277 | info@brokkinc.com | www.brokk.com

www.aquajet.se

EXPLORE THE AVANT WORLD – A NEW WAY TO WORK.

AVANT

– THE RIGHT CHOICE.

Leading the way

Avant is the pioneer of easily operated and efficient multi-functional loaders with 30 years of experience in the field. We develop innovative loaders and highly efficient attachments with our customers to make any work easier.

High quality products

All loaders are manufactured in the modern and highly automated production plant in Finland. Quality control is accurate along the production process and all loaders are tested carefully before delivery.

Lift it. Move it. Dig it.

From over 200 attachments you'll find the perfect tool for your Avant of choice.

100% aftersales reliability

Avant aftersales; spareparts and service are widely available in the US and Canada. We are there when you need us.



Avant loaders and attachments

AVANT TECNO USA Inc.
3020 Malmo Drive
Arlington Heights, IL 60005

info@avanttecnousa.com

WWW.AVANTTECNOUSA.COM

Event Calendar

World of Concrete 2021

June 8-10, 2021
Las Vegas Convention Center,
Las Vegas, Nevada

www.worldofconcrete.com

Bebosa Show

September, 23-25, 2021
Willingen, Germany

www.bebosa.com

Concrete Show Brazil 21

September, 2021
São Paulo Expo, São Paul, Brazil

www.concreteshow.com.br

DEMCON 2021

Sept 30 - Oct 1, 2021
InfraCity, Bredden,
Stockholm, Sweden

www.demcon.se

Ecomondo 2021

Oct 26-29, 2021
Rimini Exhibition Centre
Rimini, Italy

www.demcon.se

The Ara Show 2021

Oct 18-20, 2021
Las Vegas Convention Center,
Las Vegas, Nevada

www.arashow.org

Hillhead 2021

June 21-23, 2022
Hillhead Quarry
United Kingdom

www.hillhead.com

ISRI 2022

March 21-24, 2022
Mandalay Bay, Las Vegas, USA

www.isri2022.com

BAUMA 2022

October 24-30, 2022
Munich Exhibition Center,
Munich, Germany

www.bauma.de

Samoter 2023

March, 2023
Verona Exhibition Center,
Verona, Italy

www.samoter.it

Intermat 2024

April, 2024
Villepinte, Paris Nord,
France

www.intermat.fr

Genesis Co-Founder Curt Frahm Inducted into National Demolition Association Hall of Fame

Genesis Attachments co-founder Curt Frahm has been honored with induction into the National Demolition Association Hall of Fame. Awarded during the recent NDA virtual convention, Curt was recognized as an elite industry leader whose commitment, ingenuity and devotion has significantly impacted the demolition industry.

Curt was also credited for contributing to Genesis' fast start and growth, and subsequently building the company into a world-class, industry leader of attachments.

After founding Genesis in 1997, Curt spent 17 years with the company, serving as a regional sales manager. He retired in 2014.



Bob Doll Joins Durex Products as Regional Sales Manager

Durex Products Inc., a leading manufacturer of premium wire and polyurethane screen media technologies, is pleased to announce its recent hire of Bob Doll, who joins as a Regional Sales Manager covering the Eastern United States.

"As an effort to increase our Eastern US market presence, we are excited to have Bob onboard," says Chad Hackett, President of Durex Products. "Bob brings with him many years of industry knowledge and sales expertise that will be very beneficial to our customers."

Doll comes to Durex as an industry veteran with 43 years of experience in crushing and screening, working for W.S. Tyler, Metso, Buffalo Wire Works, and McCourt and Sons Equipment.

"It is a great honor to be part of the Durex organization and its great team of dedicated personnel," says Doll. "I am anxious to get into the field and start working with our dealers and customers in promoting the Durex line of innovative screen media technologies."



Doll currently resides in Louisiana, but will be relocating to South Carolina to serve the Eastern market. In his free time, he enjoys spending time with his family and woodworking.

Durex Products Inc. has offered the company's premium wire and polyurethane screen media technologies since 1965 — including its Urethane Modular Screen Panels, Armor®, Livewire® Accuslot®, and Vibraspan® products. With 55 years in business, Durex Products Inc. designs, manufactures, and markets wear parts and screen media, including polymer media in tensioned and modular versions and woven-wire cloth, for the aggregates, mining, recycling, and industrial industries.

www.durexproducts.com

Terex Trucks to Expand its Footprint in Canada

After a quieter 2020, many sectors in Canada are preparing to ramp up operations. In Ontario, the country's second-largest province, several major construction and mining projects are on the horizon. As the demand for heavy machinery is expected to increase, articulated hauler manufacturer Terex Trucks plans to expand into the province and is looking for new dealers.

Ontario's economic activity is expected to grow by 4% this year, thanks to large public-sector infrastructure projects such as a new 9.3-mile (15km) line in Toronto, and new commercial work. Mining is also becoming an especially important industry. The province has some of the largest reserves of minerals and is Canada's largest producer of gold, platinum-group metals, and nickel. These minerals are mined across 40 sites in Ontario, and the province is also a major producer of salt and structural minerals such as gypsum.

Currently, metal prices are high, which means the mining industry will play an important role in the country's economic rebound after Covid-19. Therefore, it is not surprising that the Government of Ontario has given permission for the construction and opening of new mines, including IAMGOLD's Côté Gold mine, located between Sudbury and Timmins. Construction started in September last year, and production is expected to commence in the second half of 2023.

Terex Trucks wants to benefit from this opportunity and further strengthen its market presence in Canada. The Scottish articulated hauler manufacturer already has two dealers in the country — Headwater Equipment in Alberta and RDM Equipment Sales and Rentals in British Columbia — and is now looking to bring its TA300 and TA400 dump trucks to customers in Ontario.

Terex Trucks' durable articulated haulers are made for the most extreme environments and can be found in Canada's construction, agriculture, petroleum, and mining sectors. Terex Trucks haulers prove especially popular in mines, due to their robustness and powerful performance in tough conditions. The TA300 and TA400 climb and descend slopes with ease, thanks to a modulating transmission retarder that is coupled with an efficient exhaust brake and fully enclosed oil-cooled multidisc brakes.

The 28t TA300 has a maximum payload of 28t and a heaped capacity of 23 yd³ (17.5m³). The hauler comes with the latest 8-speed-transmission, leading to improvements in fuel efficiency, performance, productivity and operator comfort, when compared to the previous model. The TA300 delivers a 5% improvement in fuel efficiency and a 3.1-mph (5kph) increase in speed, to 34 mph (55kmh). In addition, the truck now comes with eight forward gears, as well as four reverse gears, to help ensure smoother gear shifting and, therefore, higher levels of operator comfort. All this means that customers can be more productive, achieving faster cycle times, lower cost per tonne and reduced carbon emissions.

The TA400, Terex's largest articulated hauler has a maximum payload of 38t and a heaped capacity of 30.3 yd³ (23.3m³). Powered by a high performance, fuel efficient engine that develops a gross power of 444 hp (331kW), the TA400 is designed to meet the demands of the most extreme operations such as quarries, mines and large-scale construction projects. The planetary gear transmission provides smooth, efficient gear shifting for optimized fuel consumption and reduced cost of operation. Ground-level test points and a fully tilting cab, combined with an electronically raised hood, ensure ease of service and maximum uptime.

www.terextrucks.com





ALWAYS THE RIGHT ATTACHMENT

FULLY AUTOMATIC QUICK COUPLER SYSTEMS FOR MAXIMUM PERFORMANCE!

- Lightning fast change of hydraulic, electrical and mechanical attachments from inside the cab.
- Always the right attachment for the job.
- No staff around the machine during tool changes.
- Reduce the number of machines on the site.
- Meets and exceeds safety standards globally.
- Increased productivity.
- Increased profitability.
- Reduced transport costs.
- Minimizes oil spills.
- Protected hose routing.
- Improved safety.
- Less dirt in the cab.



Where Demolition Professionals Build Relationships

The National Demolition Association is your source for success in the demolition industry.

- Industry Networking
- News and Regulatory Updates
- Safety Training
- Best Practices and Standards

JOIN TODAY!
demolitionassociation.com/membership



Power Meets Portability in New McCloskey I4C Compact Impact Crusher



McCloskey International has unveiled the I4C, the latest entry into the company's impact crusher line. The I4C brings the power and productivity of a 44.3-in (1,125mm) impactor to a compact footprint for maximum maneuverability. Taking the original impact crusher design and transforming it into a heavy-duty compact product that is more flexible and productive, the new mobile crushers maximize the efficiency of any project site.

Built to the same high standards as full-size crushers, the new I4C delivers additional convenience and choice to suit every customer's needs. McCloskey engineers have adapted the design to meet the evolving requirements of today's projects and operations by developing more compact products while maintaining the same high standard of McCloskey durability, reliability and quality.

The I4C compact impact crusher has been designed with a deeper chamber, creating greater tramp release space. With an aggressive blow bar and apron design, 4-bar variable speed rotor, and three crush zones with an optional fourth strike, the I4C can be set up as a primary or secondary crusher in some of the toughest materials.

A new asymmetric feeder reduces bridging that can occur in some applications and, combined with the single unit

feeder-hopper construction, delivers better motion and vibration for the material as it moves into the impact chamber. Maximum efficiency of material flow is delivered end-to-end with the I4C - from the feeder to the new curved belt on the main conveyor that better manages material delivered to its impressive 13-ft (4m) high stockpile. With quick release and ground level access, the conveyor belt is also easy to maintain and service.

In addition, a chamber door safety sensor, built in safety shutdown functions, chamber safety arm and an innovative platform for changing blow bars all contribute to the safe operation and maintenance of the equipment. For maintenance ease the vast majority of components are identical between models to simplify spare parts. Ground-level access allows for quick service and maintenance, reducing the downtime for the operation.

McCloskey's compact, mobile crushers are well-suited to construction and demolition recycling, asphalt recycling, and aggregates. With their fast set-up time and ability to nimbly move around in tight spaces, the crusher's small footprint is uniquely suited to heavy duty applications where mobility and high production are key.

mccloskeyinternational.com



ROAD TO ECOMONDO 2021

MARCH

APRIL

MAY

JUNE

SEPTEMBER

DIGITAL GREEN WEEKS

Leading
the ecological
transition.

ECOMONDO

26-29 OCTOBER 2021

RIMINI EXPO CENTRE - ITALY

organized by
**ITALIAN
EXHIBITION
GROUP**
Promoting the Future

in collaboration with



simultaneously with

KEY ENERGY
THE RENEWABLE ENERGY EXPO



ecomondo.com

For info and request for complimentary tickets please contact: helpdesk@iegexpo.it

Break(e

It's been a tough year for everyone, particularly demolition equipment manufacturers located in areas of the world severely hard-hit by the coronavirus. Still, many companies have pushed forward with new and upgraded hydraulic breakers and other attachments designed to help contractors continue their quest for jobsite efficiency, operational reliability, and low ownership costs. Whether the job involves infrastructure, buildings, or other types of facilities, these breakers are ready to get to work.

Indeco Spotlights Its Latest Innovations

The HP 100 FS, the smallest hammer in the Indeco range, made its US debut at Conexpo last year as the HP 150 FS. The American market is increasingly on the lookout for mini-excavators and other compact carriers from 0.7t upwards, which can operate in restricted working areas. Capable of top performance even with reduced hydraulic flow and weighing under 132 lb (60kg), the little giant of the Indeco hammer range streamlines job times and ensures excellent productivity through an impact energy per blow which is unparalleled among hammers in the same class.

Two lightweights in the Indeco small hammer range—HP 400 FS and HP 550 FS—offer improved performance with new powerful features, including increased energy class, blows per minute, and tool diameter. While both models' hammer size and design are unchanged, Indeco's upgrades decidedly improve the perfect match with excavators, providing maximum hydraulic efficiency for the finest performance in its category.

A totally new product that extends the already broad range of large Indeco hammers is the HP 6000 FS, which takes up a position midway between the HP 5000 and HP 7000. With this product Indeco aims to provide an answer to a specific trend in the excavator world, which is seeing 30t carriers increasingly replaced with slightly larger models weighing 35-36t. The new HP 6000 hammer is an ideal fit for excavators in the 35-45t range, especially given its excellent power-to-weight ratio. The new model is also a champion of productivity and reliability, partly due to the HARDOX® inserts in the lower part of the casing, which enable it to withstand even the toughest jobs.

Finally, Indeco has introduced a new automatic greasing system developed by Bekalube's technical staff. A series of key systems are designed to keep hammers in perfect working order by using the right amount of lubricant and cutting out the down times needed for manual greasing. The new kits are divided into two categories – on-board systems fitted directly onto the hammer, and

units mounted onto the excavator. In both cases, these systems are connected to the hammer through a single greasing point.

Technical Specifications

	HP 100/150	HP 400	HP 550	HP 6000
Weight (lb/kg)	130/59	507/230	705/320	7,937/3,600
Steel dia. (in/mm)	1.65/42	2.6/65	2.9/75	6.7/170
Pressure adjusted to carrier (psi/bar)	2,320/160	2,320/160	2,320/160	3,046/210
Max back pressure (psi/bar)	232/16	174/12	174/12	102/7
Energy per blow (lbf/ft)	118/160	406/550	553/750	6,638/9,000



Time!

Doosan Launches New HB-series Hydraulic Breakers

Doosan Infracore has launched the new HB-series hydraulic breaker range. The new five-model range provides a novel concept with high performance and a simplified design, specifically optimized and fully certified for Doosan excavators with carrier weights from 1.2t to 15t, as well as attachment carriers from other manufacturers. As a result, Doosan HB breakers offer the highest possible productivity, whether the operator is demolishing concrete or breaking rocks.

The breakers' service life is extended through adoption of an advanced heat treatment process and quality proven materials for key components including the cylinder and piston. The energy of the piston stroke is accumulated by charged nitrogen gas and an inward valve system with a simple structure and fewer inner parts.

A urethane damper prevents vibration that might damage the carrier and improves operator comfort. The front head supports the breaker and assemblies with bushing, which buffers the shock from the tool. The low noise housing is ideal for working in urban zones, where noise levels must be controlled, or where local regulation may require silenced breakers.

Ideally suited for demolition work, the Doosan breaker range is also intended for general construction,



rental, quarrying and mining applications. Backed by an industry-leading two-year warranty, the breakers are available at cost-effective prices, providing customer benefits in terms of total cost of ownership. And as with all Doosan machines and attachments, the new breakers are covered by the Doosan dealer service network and product specialists, providing fully comprehensive "one-stop service" support.

Idromeccanica's Big Breakers Can Handle Big Jobs

Around the world, demand for big breakers has increased incredibly. Idromeccanica has promptly satisfied the latest trends by offering the improved IMI 170M, IMI 240M, and IMI 320T which are now the company's best-selling models.

Specifically, the IMI 170M features a 5.3-in (135mm) tool and weighs 3,968 lb (1,800kg) fitting machines from 21t to 30t. The breaker releases 3,319 lbf (4,500 J) of energy, and assures 400-800 blows per minute. It suits the most common excavator classes, and is suitable for any job. The IMI 240M breaker is equipped with a 5.9-in (150mm) tool bit matching machines from 26t to 35t, providing a power of 4,794 lbf (6,500 J) with 370-800 strokes per minute.

Last but not least, Idromeccanica offers the powerful IMI 320T, featuring a heavy-duty casing with a 6.1-in

(155mm) tool. The IMI 320T weighs 7,055 lb (3,200kg) and suits machines from 35t to 50t. As with other IMI breakers, the 320T matches any machine in its class.

All IMI breakers feature an attractive design, and are supplied with air and grease holes—features that are many other brands offer only as options. The air hole allows to use the hammer for underwater works while the





grease hole allows to simply bolt on the automatic lubrication device making greasing very easy and comfortable.

All Idromeccanica are made entirely with pride in Italy. The company pays close attention to quality, performance and design and continually monitors customer needs, making R&D the company's everyday goal. Look for bigger models to join the IMI product range soon.

JCB's Contractor Range of Hydraulic Breakers

JCB Attachments offers its Contractor range of hydraulic breakers designed to work with .5t to 60t excavators, backhoe loaders, and compact machinery from JCB, as energy, and well as other brands of excavators and breaker tool carriers. The range now includes 14 models, from the compact HM012T that tips the scales at just 264 lb (120kg) to suit mini and micro excavators, to the 3.8t HM380T, which has been designed to work with excavators in the 40-60t category.

HM033T and above Contractor breakers have accumulators to protect the carrier machine from hydraulic pressure spikes, reducing possible wear and tear on the hydraulic system. HM080T and above Contractor breakers are equipped with refillable auto-greasing system, and an auto-stop feature that reduces blank firing, protecting the breaker from unnecessary wear and damage.

Internal control valves deliver higher efficiency and are less vulnerable than competitor models that rely on external valves, while two-speed control valves allow the operator to customize tool speed and stroke length, dependent on the material that is being broken. This increases productivity and reduces the risk of damage to the breaker and the carrier.

Hammers for use with equipment above an 8t operating weight come as standard with a refillable auto greasing system, ensuring the breaker always receives the correct amount of lubrication throughout the working day. This cuts downtime and boosts productivity for the customer.

Twin oval tool retaining pins are included on heavier models, delivering double the life of a standard pin, as they can be rotated to wear on both sides. Smaller breakers are equipped with a single tool retainer.

Contractor breakers use a single scaled design with the same maintenance requirements for each model. This ensures that dealer and customer service staff, particularly in a rental operation, can easily work on all hammers in the range. All models undergo final assembly in the UK to the highest quality levels, and come backed by a three-year manufacturer warranty.



Mantovanibenne's SH700R Eagle II Shear Demolishes a Power Plant in Germany



Lünen is the largest city in the Unna district of western Westphalia in western Germany. The power plant of the Hagedorn group was part of the Rhein-Ruhr municipal services consortium between 1938 and 1941 for the supply of a nearby STEAG aluminum plant. In 1968, the power plant added an 820-ft (250m) tall chimney—the tallest structure of its type in Europe at the time.

In March 2019, the plant's increasingly difficult economic sustainability led STEAG to ask the Federal Network Agency for the definitive closure of the plant's units 6 and 7. Kiesel GmbH, the company in charge of carrying out this important demolition, began dismantling the facility in June 2020.

The first phases of the demolition

were carried out with the use of explosives, starting with the flue gas desulfurization system, followed during the first months of 2021 by the electrostatic precipitators, the combustion gas denitrification system, and the cooling tower and chimney.

After the initial demolitions with explosives, necessary to deconstruct the imposing protections of the plant, the project team proceeded with a more precise and silent controlled demolition.

For the building that housed the electrostatic precipitator, mainly made of iron, the Mantovanibenne SH700R Eagle II demolition shear was chosen to cut and demolish the internal iron and steel structure. Designed specifically to deal with iron structures and the



WORLD OF CONCRETE
Booth W703
June 8 - 10

Demolition without limits


low noise


low vibration


low dust


eco-friendly


www.darda.de

Demolition tools made in Germany

demolition and future recycling of steel and derivatives, the SH700R was perfect for tackling the imposing iron structure that covers the plant, cutting and demolishing with force and precision, section after section. The 230t shear was mounted on the largest demolition excavator in Germany—an imposing KMC1600S, born from the collaboration of Hagedorn and Kiesel.

So how does a 300t machine arrive at its destination? Up to eight transporters were required to move the excavator

and all its work equipment. The transport weight of the superstructure alone (without trolley and counterweight) is 76t. The counterweight weighs 40t, and each heavy truck comes with 22t. An integrated hydraulic lifting system allows freight vessels and counterweight to be loaded independently.

The SH700R is just one of the dozens of shear models in MBI's Eagle Shears line dedicated to the world of iron recycling and demolition.

www.mantovanibenne.com

Antraquip Drum Cutters Make Quick Work of Lock Enlargement Project in New York

Antraquip recently supplied three of their powerful AQ-5 drum cutters to one of their most longstanding customers in northern New York state. The project was particularly challenging, as the contractor needed to complete the controlled concrete demolition of a wall within a canal lock quickly in order to ensure the facility would be ready to accommodate large ships enroute to major cities in the northeastern part of the US and Canada.

The contractor mounted the AQ-5s on CAT 349 excavators positioned on barges. From there, the contractor would grind up to 3 ft (1m) of concrete off the surface. Unlike normal weathered concrete commonly seen on lock and dam rehab jobs, this material had a hardness of 55MPa (UCS) with imbedded steel rebar.

As the machines worked their way down, the water level was dropped in




order to access the deeper areas of the lock. The project required operation of the three machines around the clock despite brutal weather conditions with temperatures dropping to as low as -30°F (-34° C). Nevertheless, the entire project was completed well ahead of schedule in less than a month.

Antraquip drum cutters proved to be the ideal option for a project like this, as the AQ-5s provided the perfect combination of high productivity and precision while eliminating the possibility of over-breaking or microfracturing that could damage the integrity of the lock walls.

Antraquip is proud to offer high production solutions with their heavy-duty cutters without having strict limits on the compressive strength. The company's attachments have tackled many similar demolition jobs operating in heavily reinforced material.

www.antraquip.com


HEAVY EQUIPMENT CORPORATION



» 2017 CAT 349FL UHD »

Zero hours on a J.J. Scheckel Custom, Ultra High Reach Demolition Conversion. 96'6" Total reach, Quick attach boom and lines, Hydraulic tilt cab, Extra counterweight, Highest quality package. Optional Cat MP324 multi processor tool and jaw sets at additional price if needed. The stock boom, stick, and bucket are also available if needed at additional price. **\$458,000**

call: 563-872-4112 | email: sales@jjscheckel.com | www.jjscheckel.com

Seattle Struc

How Hydrodemolition Played Part in the Renovation of Climate Pledge Arena

One of Seattle's most well-known buildings – the Climate Pledge Arena – is in the middle of a monumental renovation, one that will more than double the square footage of the building. The venue, formerly known as Key Arena, will be fully renovated and reopened by the end of 2021. The ambitious project officially began in the fall of 2019 and has since been the stage for some unique engineering and demolition methods, including the use of AquaJet Hydrodemolition robots. Contractor Redi Services played a key role in the renovation process by bringing this innovative equipment to the jobsite. Expanding a building downward avoids the mess that comes with a traditional horizontal expansion – redesigning a city structure and demolishing surrounding buildings. But the unique approach didn't actually stem from those concerns. Instead, the inspiration came from a desire and mandate to preserve the building's roof. Designed by architect Paul Thiry for the 1962 World's Fair, the easily identifiable sloped roof received historic landmark status for its original use in a historic cultural event. The landmark designation requires that any modification to the building preserve elements of the historic structure.

Since the renovation process was under a microscope, every aspect of the process underwent additional planning and inspection. The downward expansion – which will take the size from 368,000 ft² (34,188 m²) to roughly 800,000 ft² (74,322 m²) – presented a variety of logistical challenges. Crews dug an additional 15 ft (4.6m) below the current arena floor, about 60 ft (18.3m) below street level. While accomplishing that feat, there was one small concern – how to hold up the 44-million lb (20-million kg) roof.

Installing a Superstructure

The engineers and contractors, including M.A. Mortenson Co. and subcontractor Rhine Demolition, developed an intricate plan—install a support system to hold up the roof while they demolished the current columns and buttresses, and then rely on the supports for several months to allow for installation of the new support system. It seems daunting, but with a well-thought-out approach and step-by-step execution, they made it happen. After first excavating downward and removing roughly 600,000 yd³ (458,733 m³) of soil, crews drilled new foundation supports. This system of 56 columns created the superstructure used to temporarily support roof so contractors could excavate to the necessary level. The next step involved demolishing the original concrete footings. For a demolition project of this stature and configuration, a traditional approach of chipping hammers didn't seem logical. Hand-demolishing each pillar would have taken



For precision and efficiency, the contractor used two AquaJet Aqua Cutter 710V robots to remove portions of 28 columns, four chevrons and one buttress in 30 days.

days, putting the destruction of all 28 columns, four chevrons and one buttress on a timeline of 8 months.

Besides the lengthy time commitment resulting from traditional demolition, there was another potential downfall to implementing that approach. The demolition of the structure required extreme precision. Because the bases of the original structures were going to be used as a foundation for the new pillars, engineers required specific amounts of structural material, including rebar and concrete, to be left intact. Concrete breakers could have damaged the rebar and risked microfracturing the concrete columns. The accuracy and highly regulated stipulations required on this renovation were not a good match for traditional demolition methods. There was a different option, though, that involved a process unfamiliar to many.

Hydrodemolition to the Rescue

Subcontractor Rhine Demolition used its connection with water blasting specialist Jetstream of Houston to find a precise, efficient and effective solution for the demolition. Jetstream recommended Redi Services, an industrial services support company based out of Lyman, Wyoming. Redi Services used two AquaJet Aqua Cutter 710V robots that allow the operator to reach horizontal, vertical and overhead areas thanks to a 3D positioning power head. But because everyone was working in the same area, trying to accomplish their part of the project on a tight schedule, it took diligent planning and careful choreography to keep everything moving and to avoid mishaps.

During the phase of the project that Redi Services was involved in, there were up to 175 contractors and subcontractors onsite at a time. With a significant number of groups working, it was important that the logistics planning also considered the safety of everyone involved. Contractors marked exclusion zones with red tape and flags to keep people on the jobsite a safe distance from the high-pressure water jets and the debris from the concrete removal. Besides the robots themselves, Redi Services used additional tower sections to accommodate the height of the columns. They also used two Hydroblast high-pressure water pumps, which provided 20,000-psi water pressure at 45 gpm (170 lpm). The pumps were positioned 50 ft (15m) from the work, with a 100-ft (30m) hose connecting them.

In total, Redi Services demolished structures that



To preserve the arena's iconic room, project managers opted to hold up the multi-million-pound roof while they demolished buttresses, and then relying on the supports for several months to install the new support system.

totaled 250 yd³ (191 m³) of material, all while keeping the rebar intact. The 1.5-in (38mm) rebar was installed in multiple rows, adding additional obstacles to the demolition. The AquaJet robot cut up to 2 ft (61 cm) thick per pass, enabling Redi Services to up to 3.5 yd (3.2 m) per hour, depending on the rebar placement.

Because of their familiarity with the process, and the quality of the equipment itself, Redi Services encountered very few holdups and issues on the project. They employed a team of eight each day, including one operator for each robot, one to operate each pump, one for each vacuum truck, and a supervisor and technician to support both robot "teams."

The removal of each column was about a three-day process. Workers set up the equipment, spent 16-20 hours demolishing each structure, and then moved

Structure Revamp



ed for installing a support system
hed the current columns and
nths to allow for installation of

the equipment on to the next column. Redi Services completed the demolition in 30 days, working 8-hour shifts. Alternative methods, such as handheld chipping hammers, would have taken as long as eight months and wouldn't have resulted in the same precision as the hydrodemolition approach. The Climate Pledge Arena continues to be the site for creative, innovative and efficient methods and equipment. After the original support piers were demolished, crews reconnected the roof to permanent support pillars. They implemented steel and concrete frames to form the seating area of the interior and continually add details that hint at completion. The arena is on track to be fully completed by fall 2021, and the time-saving hydrodemolition performed by Redi Services played a role in that.

www.aquajet.se



An old shipping container that was repurposed and cut into shields for three sides of the demolition to contain blast water and increase safety on the bustling jobsite.



One reason for selecting Hydrodemolition was the 1.5-in (38mm) rebar installed in multiple rows. This method provides ample destructive power without microfractures.

www.demcon.se

DEMCON 2021

Sept. 30 - Okt. 1, 2021

InfraCity, Stockholm

The Swedish Demolition
Awards Ceremony



Exclusive Premium Diamond Sponsor



www.sdca.se

Exclusive Ruby Sponsor

Pentruder
CONCRETE CUTTING SYSTEMS

Exclusive Platinum Sponsor

Husqvarna

Gold Sponsor



STEELWRIST
EARTHMOVING EFFICIENCY



Supported by:

Official Show Magazines

Organizer:



Innovative remote-controlled machines with an advanced three-part arm and 360-degree rotation reduce soft tissue and repetitive motion injuries by allowing operators to perform a range of tasks at nearly any angle without fatiguing or straining muscles.

Rise of the Machines



With an operating distance of up to 984 ft (300m), remote-controlled units physically distance employees from harmful silica dust, as well as the strong vibrations of handheld equipment such as breakers, rivet busters and chipping guns.

Benefits of Remote-Controlled Equipment for Demolition Contractors

By Jeff Keeling, North American Sales & Marketing Manager, Brokk Inc.

Change has always been a constant in the construction and demolition industry. Contractors, workers and project managers pushing for safer, more productive solutions have transformed the modern jobsite from a buzzing hive that relied predominantly on manual labor to a streamlined operation dominated by hard-hitting machines. In today's competitive market, methods that rely on manual labor are unsustainable. Instead, successful contractors are supplementing experienced crews with machines that increase efficiency in a number of areas. This mechanization has allowed the industry to continue to thrive and meet challenges, such as safety concerns, environmental issues and shrinking workforces, head on.

Within demolition, remote-controlled machines provide an innovative mechanical solution, enabling contractors to continue moving forward despite ever-changing industry conditions. These machines also pave the way for new opportunities in industries such as processing, concrete cutting, mining and tunneling. Here's how:

Non-Stop Productivity

Thanks to advanced technology and an industry-leading power to weight ratio, these compact machines can access some of the most restrictive jobsites — including those with dust, vibration and noise restrictions as well as low floor loads. At 31 in (79cm) wide and weighing 1,235 lb (560kg), the most compact units are small enough to fit through standard doorways and light enough to be

transported on passenger elevators, making them ideal for confined spaces and interior demolition projects. A number of larger models — up to 13t — are available for projects where power is more important than footprint. Regardless of size, these demolition robots provide an impressive hitting power, on par with excavators three times their size.

This allows contractors to greatly increase efficiency

Demolition methods that rely on manual labor are unsustainable — in terms of worker safety, productivity and overall cost-effectiveness. Instead, successful contractors are supplementing experienced crews with remote-controlled demolition machines that increase efficiency in a number of areas.





Thanks to advanced technology and an industry-leading power to weight ratio, compact demolition robots can access some of the most restrictive jobsites — including those with dust, vibration and noise restrictions as well as low floor loads.

by employing heavy-hitting machines in applications previously limited to large crews with handheld equipment. For example, one contractor cut the demolition crew by a third on a recent interior demolition with two 2,183-lb (990kg) remote-controlled demolition machines. The robots, each with a single operator, were able to access floors where even skid steers were deemed too heavy during the nearly 1 million ft² (92,903 m²), multi-level tear out. With minimal labor requirements, the contractor could better utilize employees across simultaneous jobsites while increasing productivity and lowering overall labor costs. In addition to replacing large crews with handheld equipment, remote-controlled demolition machines with the right attachments can also do the job of several common compact machines — including skid steers and mini excavators — allowing contractors to increase productivity without expanding their fleet. The benefits of increased productivity and versatility from remote-controlled demolition machines translate to more jobs, less overhead and a bidding advantage for contractors in a number of applications, including concrete cutting.

For example, removing an elevated floor using traditional concrete cutting methods starts with adequate shoring, for safety, followed by sawing the floor into workable pieces before removal and crushing in another location. Instead, one contractor was able to revolutionize his process with remote-controlled demolition machines. Taking advantage of the lightweight robot's compact size and a crusher attachment, crews were able to break the floor into small enough pieces to safely drop onto the ground below. This process eliminated the need for shoring and allowed crews to complete the work twice as fast. It also reduced labor and parts costs, enabling the company to cut overall project costs by two thirds, which, in turn, provided a significant bidding advantage in a competitive market.

Industry-Leading Safety

But what good is a healthy bottom line without healthy employees? For many in the construction and demolition industry, increased safety is perhaps as important as pro-

ductivity benefits when it comes to mechanization on the jobsite. Again, remote-controlled demolition machines are at the forefront, maximizing safety by removing operators from many of the most dangerous situations.

Social distancing and other preventative measures to stem the spread of COVID-19 are currently at the forefront of contractor safety concerns. For companies using remote-controlled demolition machines, the reduced crew requirements make it easier to follow recommended safety guidelines. However, there are also a number of long-standing safety and health risks remote technology can help alleviate. With an operating distance of up to 984 ft (300m), remote-controlled units physically distance employees from harmful silica dust, as well as the strong vibrations of handheld equipment such as breakers, rivet busters and chipping guns. Long-term use of these common demolition tools is linked to a number of chronic injuries, including carpal tunnel syndrome, nerve damage and hand-arm vibration syndrome. These health concerns affect a large number of construction and demolition workers, which is reflected in workman's comp claims and insurance premiums for employers. Additionally, remote-controlled demolition machines help prevent one of the most common causes of serious work-related injury and death in construction — falls. Recent U.S. Bureau of Labor Statistics data identified 338 fatal falls among 1,038 total construction fatalities for the year. That same year, falls on the same level or to lower levels amounted to \$17.1 billion — 29.2% — of the nearly \$60 billion spent by employers on serious, non-fatal workplace injuries. A remote-controlled unit allows operators to remain a safe distance from ledges and other fall hazards, minimizing the need for erecting fall protections.

Another common jobsite safety risk where remote-controlled machines can offer relief is mounting and dismounting equipment. While the cab of an excavator or other compact equipment protects operators from dust and flying or falling debris, climbing into or out of these machines is a leading cause of jobsite injury for these employees, resulting in sprains, strains and other minor ailments. Remote-control demolition machines eliminate this risk by allowing operators to remain safely on the ground and outside the immediate work zone.

Innovative machines with an advanced three-part arm and 360-degree rotation further reduce soft tissue and repetitive motion injuries by allowing operators to perform a range of tasks at nearly any angle without fatiguing or straining muscles. An ergonomic, lightweight control box conveniently attached at the waist also helps.

For contractors using remote-controlled machines, these safety benefits can quickly add up to significant savings on workman's comp and insurance premiums. Remote operation paired with smaller crew size can significantly lower worker liability costs by limiting personnel in confined spaces or hazardous operations.

One concrete cutting contractor who made the switch to demolition robots nearly two decades ago has seen a decrease in annual compensation claims by about 50%, thanks in part to the reduced physical strain provided by these machines. The company has also seen a 25% decrease in injury costs per year. Another concrete cutting operation reduced its experience modification rate (EMR) and workman's comp claims with the addition of remote-controlled demolition machines.

Crunching the Numbers

The desire to reduce injuries and insurance premiums has driven an industry-wide trend toward mechanization. One in 10 construction workers is injured annually. In 2018, this resulted in \$170.8 billion in total cost and

103,000,000 total days of lost production. A company facing \$50,000 in losses from injuries, illness or damage, must sell an additional \$1,667,000 in services just to remain profitable. But, those who have made the switch to remote-controlled demolition machines have found the benefits go far beyond dollars and cents.

Finding and retaining skilled workers has become a major challenge for construction and demolition operations, the result of an aging group of current employees and fewer young workers interested in entering skilled trades. However, despite these shortages, the demand for demolition continues to grow, leaving contractors with a perfect storm of plentiful work but not enough hands to carry it out. Here again, mechanization offers an innovative solution. In addition to safety and comfort features that allow existing employees to remain on the job for longer, cutting-edge robotic technology is attractive to younger workers. For one concrete cutting company, including advanced robotic technology in their fleet helped reduce the median age of their 300-strong workforce to just 25 years old and cut turnover 10%. The machines also allowed the contractor to do more work with fewer people, increasing productivity 17% over three years.

More Jobs in More Places

Mechanizing with remote-controlled demolition machines provides significant growth potential for contractors. Increased productivity opens up opportunities for consecutive projects and better workforce utilization while the machine's unique capabilities offer the chance to expand into new markets and applications. There's no way to accurately predict what tomorrow's jobsite will look like, but, for successful contractors, factors such as productivity, safety and profitability remain evergreen. Mechanization allows these companies to quickly adapt to changes in labor, process or regulation, keeping them ahead of the curve — and the competition.

About the Author

Jeff Keeling is the North American sales & marketing manager for Brokk Inc. He works closely with regional sales managers to develop and grow the Brokk brand in key segments across the United States and Canada. He is also responsible for educational initiatives aimed at helping customers maximize their Brokk machines' potential.



In addition to replacing large crews with handheld equipment, remote-controlled demolition machines with the right attachments can also do the job of several common compact machines — including skid steers and mini excavators — allowing contractors to increase productivity without increasing their fleet.

FR200 GENUS!

Let us introduce new FR200 Genus. Genus is Latin for friendly and that's what FR200 Genus is. It has the same quality and performance as for past 60 years but now also with substantially lower vibration level.

FR200 Genus vibration level is only 3,6 m/s²!



In addition, FR200 Genus has a new dust port design with dramatically increased dust pick-up capabilities.

That is what we call friendly. Operator friendly – a GENUS!



Call our distributor for more info, demonstrations, and trade in offers for old units. You find them at www.vonarx.com **distributor page**.

BIG TOYS FOR L

In late April, it was announced that the Bauma construction show in Germany was rescheduled for October 2022. That's probably the best piece of news the construction industry has heard since the beginning of the pandemic. As the world's biggest trade show, Bauma is widely expected to have a healing effect on international business. There is no doubt that visitors to the Messe München will be greeted with a veritable deluge of new machines and tools. And there is also little doubt that most of the demolition excavators presented in this feature will be on display in Munich.

Doosan to add third model to high reach demolition range

Doosan Infracore Europe is about to launch the DX380DM-7, the third model in the company's new high reach demolition range, joining the existing DX235DM and DX530DM excavators introduced last year. The machine features a high visibility 30° tiltable cab, which is particularly suited to high reach demolition applications. The maximum pin height of the demolition boom on this model is 75.5 ft (23m). The DX380DM-7 retains a hydraulically adjustable undercarriage, which extends to a maximum width of 14.3 ft (4.37m) for enhanced stability. The width of the undercarriage can be retracted for transportation. The adjusting mechanism is based on a permanently lubricated, internal cylinder design, which minimizes resistance during movement and helps prevent damage to components. A modular boom design and hydraulic lock mechanism enhance the machine's flexibility, and facilitates easy change between demolition and earthmoving booms. A cylinder-based system pushes the locking pins into place to help complete the procedure. When equipped with the digging boom in the straight configuration, the DX380DM-7 can work to a maximum height of 34 ft (10.43m).

www.eu.doosanequipment.com



German specialist chooses Sennebogen 830 E for selective demolition

When demolition and recycling specialist Brandhuber Transporte GmbH started a major deconstruction project in the historic part of Straubing last December, the company did not have to go far looking for the right equipment, with the Sennebogen's headquarters located mere blocks from the jobsite. The project involved selective demolition of three buildings over a period of four weeks using a Sennebogen 830 E excavator.

With an engine power of 225 hp (168kW) and 360° operational capability, the 45t machine effortlessly pulled down the four-story former residential buildings one after the other and sorted construction debris into allocated containers right on site. The 4.5m wide telescopic undercarriage, in particular, contributes to the stability of the excavator.

Brandhuber Transporte's team began the job by grabbing and moving the chimney from a height of 50 ft (15m) to the ground in one piece. The team then disassembled the roof's remaining elements and loaded bricks, metals, and wood into various containers for subsequent recycling. The machine's stability and 360° capability were crucial for Brandhuber, because the endless upper carriage rotation eliminates time consuming repositioning maneuvers.

www.sennebogen.de



Straight boom transforms the Volvo EC380E into demolition monster

Fitted with a 23-ft (7m) long straight boom and a purpose made arm, the new Volvo EC380E model does away with the traditional "boom and stick" approach of excavators. The extra-long straight boom provides significant height and reach advantages over conventional machines. The cab is protected against falling debris by a frame mounted falling objects guard. The roof and one-piece front windows are made from P5A glass, resistant to high impacts. Night visibility is aided by standard LED lights on both the boom and platform, with additional light options available for the cab and counterweight.

The machine also comes with quick-fit and oil drain line and water lines that are connected to a dust suppression system consisting of an 8 gpm (30 lpm) lifting pump that feeds water into four arm-based nozzles, creating a fine mist. In the system's auto mode, water is only sprayed when the attachment is operating.



Designed to deal with high impact materials and demanding terrains, the Volvo EC380E straight boom has a solid main frame made of heavy-duty plate steel with bolt-head protection, and extra plating to safeguard undercover areas and tracks. The EC380E straight boom excavator comes with a choice of cab entrances consisting of either a fixed cab entrance and thicker side impact protection system (SIPS), or a foldable cab entrance with narrow SIPS for easier transport. According to the manufacturer, the range will shortly be expanded with the addition of a 30t class EC300E straight boom excavator boasting the same features and benefits.

www.volvoce.com

LOCKDOWN BOYS



Cat aims higher with new 340 UHD model

Purpose made for the demolition of tall structures, the new Cat 340 UHD excavator boasts 13% higher pin than the forerunning 340F UHD model, allowing it to reach up to eight story buildings. The machine's coupling system permits switching between two UHD fronts and retrofit booms and sticks with no special tools in 15 minutes.

With two UHD front options available, the 72-ft (22m) front offers a maximum 3.7t weight at stick pin and maximum horizontal reach of 45 ft (13.55m) at stick nose over the front and side of the machine. Working with a maximum weight at stick pin of 3.3t, the 82-ft (25m)



front offers a 43.7-ft (13.33m) reach at stick nose over the front and side of the machine. (This matches characteristics of Cat multiprocessors, specifically the MP332 and MP324 models.) Contractors can choose between one- or two-piece boom options for truck loading or lower reach demolition work.

The Cat 'Payload' system provides on the go weighing and real time estimates of the payload, so operators can achieve precise load targets when working with the single piece retrofit boom. The excavator is powered by a 311-hp (232kW) Cat C9.3B engine running on either diesel or biodiesel fuel. The 340 UHD features a 30° tiltable cab for efficient and comfortable demolition of



HYDRAULIC RECYCLING VACUUM BUCKET

POWERED BY HYDRAULICS

DYNASET HRVB HYDRAULIC RECYCLING VACUUM BUCKET

PRODUCES POWERFUL VACUUM AND AIR BLOW FOR CLEANING AND RECYCLING TASKS IN CONSTRUCTION AND DEMOLITION SITES AS WELL AS RAILROADS, FESTIVALS, COASTAL AREAS.

- Powerful air blow and vacuum with one unit
- Fast to use in cleaning tasks
- Efficient waste sorting
- Lower recycling fees
- Significant cost savings

VIDEO



HYDRAULIC EQUIPMENT FOR MOBILE MACHINERY

GENERATORS
VARIABLE GENERATORS
WELDING GENERATORS
MAGNET GENERATORS
MAGNETS
INSTALLATION VALVES

POWER WASHERS
STREET WASHING UNITS
PIPE CLEANING UNITS
DUST SUPPRESSION
DRILLING FLUID PUMPS
FIRE FIGHTING SYSTEM

AIR COMPRESSORS
BIN WASHING SYSTEM
POWER BOOSTERS
POWER TAKE-OFF
VIBRAS
ETC.



DYNASET.COM

tall buildings. For better visibility of the attachment at height, a UHD front with work tool camera is provided. The cab is equipped with FOGS P5A laminated glass for safety. Standard rear view and side view camera enhances visibility of the operating area.

Apart from Cat Payload, the 340 UHD with the single piece retrofit boom, is equipped with a host of features designed to increase productivity. Cat E-fence' and Cat Grade with 2D automatically determine depth, slope and horizontal distance to grade through the touch screen monitor. Standard Cat Product Link captures critical machine operating data and condition, conveying data to field managers and the office. Remote Troubleshoot analyzes real time machine data captured by Product Link, which allows workers to manage fleet location, hours, and maintenance schedules and delivers alerts to mobile devices.

www.cat.com

JCB 220X crawler now available in demolition specification

Following a program of extensive testing, the JCB 220X crawler excavator is now available in the XD demolition specification. Certified to FOPS Level 2, a protection cage shields the driver from falling material. All JCB XD excavators feature a side impact protection system (SIPS) designed to protect the fuel and hydraulic tanks, cooling pack and the hydraulic pump bags and is fitted down both sides of the machine's upper structure.

Underbelly protection has been improved with an increase in thickness to .4 in (10mm) to guard vital machine components on the upper and lower structure. For attachment handling, JCB offers the option of Advanced Tool Select—a display for operators to set up 10 attachments with desired flow and relief pressure.

The upper structure is now nearly 9 ft (2.7m) wider, and 8 in (200mm) broader, with the additional space to mount the main boom in the center of the machine, rather than at an offset. This reduces stress on the slew bearing, provides increased accuracy for the operator when trenching, and permits use of larger buckets without impacting the tracks. Though the boom and arm are unchanged, JCB will offer the option of boom float with two modes to make grading easier and to reduce stress when operating a hydraulic breaker.

www.jcb.com



Komatsu rolls out a "whale" of an excavator

Komatsu Europe has announced the introduction of the new PC2000-11 hydraulic excavator. Weighing in at a whopping 202t, this giant boasts an innovative engine pump control system that optimizes hydraulic flow for extra-fast cycle times. Ideal for loading 60t to 150t rigid



frame haul trucks, the PC2000-11 is also an excellent tool for stripping overburden and loading coal and shot rock. It has a simplified power module (cooling package, engine, PTO, and hydraulic pumps) that provides easy access to all major components, lowers noise levels in the cab, and reduces labor hours when time comes for a planned overhaul.

The PC2000-11 benefits from a huge mining class ergonomic cab. Standard safety features include a hydraulically activated access/egress ladder, external emergency shutdown switches, neutral detection and KomVision – Komatsu's seven-camera system that provides a 360° view of the working area on a dedicated touchscreen monitor.

Komatsu's proven after treatment system allows the PC2000-11 to meet the EU Stage V regulations without the need for Adblue. Offering an increase in productivity of up to 12%, the PC2000-11 can load more trucks per shift. The excavator is equipped with selectable working modes to tailor the performance to different applications, including the new Power Plus mode. Customers can expect extended component life on the PC2000-11 thanks to thicker, stronger boom plates and castings; strengthened track and center frames; larger diameter carrier rollers; and improved hydraulic cylinder seals that enable the PC2000-11 to withstand the most abrasive applications.

www.komatsu.eu

Liebherr-France SAS hands over its largest 'demolisher' so far to a German customer

In February, the German demolition company AWR Abbruch GmbH received the key to its new R 980 demolition excavator in an official handover ceremony at Liebherr's plant in the French city of Colmar. The ceremony took place in the presence of Liebherr-France's senior management and Mrs Brigitte Klinkert, the French Minister of Labor, Employment, Vocational Training, and Social Dialogue. The largest Liebherr demolition excavator so far, the R 980 was designed and manufactured by Liebherr-France SAS in close



cooperation with the German contractor that already owns a number of Liebherr demolishers, general purpose excavators and wheel loaders. With an operating weight of 190t and a counterweight of 35t, the R 980 comes with four boom options measuring from 59ft to 180 ft (21m to 55m) respectively to handle a variety of attachments.

www.liebherr.com

Kobelco launches its largest short radius excavator in the 38t segment

Kobelco Construction Machinery Europe B.V. has announced the launch of its largest short radius (SR) model in the 38t segment. Weighing in at more than 36t, the SK380SRLC is driven by a 200kW Stage V-compliant turbo charged Hino diesel engine with a Power Boost feature. The machine's powertrain generates a drawbar force of 70,590 lbf (314kN) for smooth and steady operation across rough terrains and slopes. In addition, the combination of high hydraulic pressure and balanced chassis layout delivers a lifting capacity of 27,315 lb (12,390kg), even when digging at a reach of 20 ft (6m).

The SK380SRLC's spacious cabin incorporates a number of features



to improve safety, operational comfort and general aesthetics. An air cushioned and heated suspension seat absorbs vibrations on challenging terrain. The color LCD multi display screen shows fuel consumption, maintenance intervals, digging mode, and other important information. Up to ten pre-set attachment settings can be selected to match the attachment being used. The tilt up opening FOPS guard level II comes as standard, providing access to the external roof glass.

Additional safety is provided by three standard cameras located on the left, right and at the rear of the machine. A two-piece boom option is expected to be introduced later this year to further enhance the machine's usability in confined spaces.

www.kobelco-europe.com

LISSMAC
CONSTRUCTION TECHNOLOGY

PROFESSIONAL CORE DRILLING PRODUCTS

LISSMAC Maschinenbau GmbH
Lanzstraße 4
88410 Bad Wurzach, Germany
www.lissmac.com



BLADES | CORE BITS | SURFACE PREP

HIGH-PERFORMANCE DIAMOND TOOLS



Whether cutting, drilling or grinding - we've got you covered! Contact us today:

North and South America: syntecdiamond.com | sales@syntecsolution.com | +1 760 737 7407
Europe, Asia and Oceania: syntecdiamond.com | sales@syntecdiamond.com | +61 8 8395 0277

Attachment Manufacturers Choose To Kick Butt, Not the Bucket

Despite governments' best efforts to curb the pandemic, there are no clear signs that the current global crisis will be over any time soon. Under such unprecedented circumstances, the excavator attachment industry shows a truly remarkable resilience. A number of manufacturers have reported their busiest start to a calendar year ever, and there is no shortage of new products being launched onto the market.



ALLU pioneers "side-by-side" crushing technique

With a 30-year track record in producing crusher and screening buckets, ALLU has pioneered a "side-by-side" technique, which involves using both crusher and screening buckets on demolition sites. The technique was first tested on a job site in Finland, a place known for harsh environments.

The debris - some 5,000t in total - resulted from the demolition of two two-storey residential buildings. Approximately 85% of the material was screened and partially crushed using an ALLU Transformer DH 3-17 XHD screener crusher bucket, with the leftover hard rocks being crushed by an AC 25-37 crusher bucket. The amount of material fed through the screener crusher bucket was much higher than that fed through the crusher bucket, with the goal of getting the fines out as accurately as possible by screening. ALLU screener crusher buckets currently feature a basic block type drum with a 3-in (75mm) hammer. The company is looking into using more durable and expensive hammers to at least double their service life.

www.allu.net

Heavy-duty CBE series from Simex

The CBE crusher buckets from Italy-based trendsetter Simex feature a patented rotor system, which makes them suitable for heavy-duty applications such as processing of demolition waste. The toothed rotor activated by the high-displacement radial piston hydraulic motors in direct drive generates very high crushing force. A special valve



allows the shaft to automatically invert the rotation of the drum when the material, due to hardness or size, cannot be immediately crushed, maximizing crushing force.

The shafts on the CBE series are first forged and then cold worked by numerical control centers until they reach required sizes and tolerances. The result is increased hardness and reliability to this crucial component, which is continuously submitted to dynamic stresses during operation. The teeth are wear-resistant thanks to special anti-wear treatment.

The CBE series is available in five models, ranging

from the smallest CBE 10, with an operating weight of 1,940 lb (880kg) and a bucket capacity of 14 ft³ (.4m³) to the biggest 4.6t CBE 50 and boasting a 63.5-ft³ (1.8m³) bucket, to fit 8-55t excavators. The buckets' functionality is unaffected by the presence of light or deformable materials such as wood, soil, and mud.

www.simex.it

MB buckets help customers create new revenue streams

One of the challenges that the road-building industry



faces on a daily basis is high costs of hauling and disposal of the removed pavement. A crusher bucket, mounted on a carrier of any size and brand, helps overcome this problem. Any asphalt, bitumen or old sidewalk can be crushed down to the required size for immediate reuse, such as base material for a new road.

Road-building specialists from different parts of the world report successful application of MB crusher buckets on their projects. A Chile-based contractor operated an MB-L200 crusher bucket to recycle material to re-use it as a sub-base, thus generating new material in no time and at zero cost. In Brazil, a company took delivery of a BF70.2 crusher bucket to reclaim asphalt. The landing strips at Reykjavik airport were rebuilt by using the old asphalt as a base material, thanks to a BF70.2 crusher bucket.

www.mbc crusher.com



VTN Europe presents five-model crusher bucket range

Another Italian player VTN Europe has a five-model range of crusher buckets for its customers to choose from. Fitting 12-55t carriers, the FB series features adjustable size setting of the crushed material from .7 to 5.1 in (18 to 130mm), eccentric-moving jaws system and an interchangeable crushing jaw kit. Driven by a powerful piston motor, the FB buckets have centralized greasing system and come fitted with electromagnet as an option.

www.vtneurope.com



XAVA Recycling: screen it like you mean it!

XAVA Recycling is a relatively new player from Austria that focuses on manufacturing compact electric-driven vibrating screens. Established in 2014 by Stefan Löss who has an extensive background in mechanical engineering and especially in crushing and screening machinery, XAVA has been seeing exponential growth in recent years. In 2020, the Austrian company purchased 64,500 ft² (6,000m²) of land to build its own manufacturing facilities and a large "Demopark" for machine testing.

XAVA's latest addition to the product portfolio is the LS14X vibrating screen designed primarily for gardening and landscaping applications. Drawing power from a standard 230V socket, the LS14X can also operate with a 220V outlet. This versatile machine allows screening a wide variety of materials from compost and soil to wood chips and gravel using different types of mesh. The processed material is ready for immediate re-use. Thanks to a purely electric drive system, there is no risk of site contamination by oil spilled from ruptured hydraulic hoses. The screen is easy to move around by using a lifting device or chains.

Due to its low weight and compact dimensions, the LS14X fits in a regular car trailer. The introduction of the LS14X brings the current number of standard models in the range to five, with tailor-made screens also available.

www.xava-recycling.at

Trevi's extends an olive branch to a Greek customer

The BVR series of screening buckets from Italy-based Trevi Benne currently comprises nine models ranging in operating weight from 242 lb (110kg) to 4.9t to fit 1.5-65t excavators. The buckets come with interchangeable perimeter kits that allow separation of the processed material in accordance with required particle size.

Weighing in at 2.5t, the BVR 19e model fitted on a CAT 330B excavator is being employed on a site just north of Athens for the reclamation of stony soils to prepare



the land for olive plantations. Both the perimeter and bottom nets are made in HARDOX 400 steel with 10 in² (6,400mm²) 80mm dimensions to pick out and remove large stones.

www.trevibenne.it

Xcentric Ripper is on its A-game

Xcentric Ripper International, based in the Basque country, has added the XS60 model to its XS range of screening



buckets designed for 18 to 70t excavators. As with other SX models, this new attachment is a high-performance rotating trommel-type bucket. Highlights include a 12-sided polygonal trommel to shake the material up more efficiently, the hexagonal profile of the screening mesh for maximum yield and homogeneous screening, the transmission between the main hydraulic motor and the trommel via a time belt for high torque and maintenance-free operation, and the Powerboost system applying vibration to the rotating trommel for increased productivity. Since vibration is of high-frequency low-amplitude kind, it does not affect the mechanical components of either the screener or excavator.

Xcentric Ripper has developed a new 12-moel "Series A" of maintenance-free crushers for 8-50t excavators. Compared to the forerunning series, the new buckets feature a different mechanics system and much simpler internal assembly. A new granulometry adjustment system offers a bigger choice of output sizes. The absence of a drain line in the hydraulic motors and the flow control valve make the attachments easily interchangeable between excavators, with a low risk of failure in case of poor hydraulic adjustment. The maintenance-free power train increases the machine reliability in the long term. The bucket can be fully opened, which makes jaw replacement very easy.

www.xcentricripper.com

Meet Gyru-Star compact screening systems!

The Gyru-Star compact screening systems are bucket-type attachments used primarily for screening soil, compost and aggregates. They can be fitted on to excavators, tractors, telehandlers, compact loaders, wheeled or tracked loaders and skid steers, replacing a standard digging bucket. The company offers six ranges E, HE, HDX, MAX, L, and SL suitable for 1-30t



excavators. Three different fragment kits are available for each model so the customers can achieve the desired fragment size.

The bucket shafts are packed with flexible polyurethane stars. In operation the shafts rotate creating a rolling action, which keeps the material fluid, and allows the fines to fall through the gaps. When employed in landscape renovation, Gyru-Star screening buckets remove stones, vegetation, and oversized particles to prepare the soil to be reused. Once screened the topsoil can then be used to level out sports fields and gardens to create raised beds and improve the existing soil quality.

Gyru-Star buckets screen materials without crushing, which makes them suitable for pipeline and cable padding, as there are no sharp stones or fragments in the screened material. These compact screening systems can also be used to screen demolition waste before crushing. They can also be used to separate compostable and non-compostable items.

The latest addition to the Gyru-Star family is the MAX buckets, which boast a longer, wider cutting edge and non-stick floor. A special design makes it easier to pick up longer smaller piles of material—perfect for padding and backfilling where the buckets can screen directly into the trench. The MAX range currently comprises eight models.

www.wheatway.com

Mantovanibenne features the MVR series

The MVR series of screening buckets from Italy-based Mantovanibenne is available in six sizes to fit 3 to 40t carriers. The attachment's sturdy body is made of high-resistance steel to protect the rotation motor and the screening basket. The support rollers are adjustable and keep the basket perfectly aligned with the rotation motor, thus avoiding stress on the moving parts. Different baskets sieves can be interchanged according to the type and dimension of the materials being separated. Baskets are available with holes size ranging from 1.2 to 7 in (30 to 180mm). The bucket's front edge can be equipped with teeth or blades upon request.

www.mantovanibenne.com



In the prolific world of mobile crushing and screening, many new machines are being rolled out on the market and being put to work in exciting projects all around the globe - from Germany and Cyprus, all the way to Burkina Faso.

Waste management company uses Rotorshredder from BHS-Sonthofen

A challenge for recycling plants is contamination with other materials. A German waste management company turned to BHS-Sonthofen for a new recycling solution for the 30,000t of non-ferrous metals they recycle annually. They opted for the Rotorshredder, which shreds the feed material and breaks up composites. The Rotorshredder type RS 2018 was fitted with reinforcements for aluminum processing, including a hardened housing, double-walled base and new suspension system. The Rotorshredder uses selective shredding. Impact forces deform aluminum, causing impurities to break down. Composites are then separated from the feed material. After classification takes place, the high-purity aluminum is ready for sale.

www.bhs-sonthofen.com



Arjes shredders in use in Israel

Arjes shredders have been used in a variety of applications in Israel. Recycling company Gal Michsur uses the Impaktor 250 Evo to process materials. Shredded waste wood is mainly used as a substitute fuel in incineration plants and is obtained by an external company for fuel

The Expanding World of Crushing and Screening Equipment



site with the Arjes Titan 950. The material is screened and processed with a high-speed machine to a grain size of less than .8 in (20mm). The Titan 950 also helps separate stones and metal that goes unnoticed during pre-sorting.

The Titan 950 also figures prominently at a large-scale waste collection point in southern Israel, where a large part of the waste is dumped and buried. Using the Titan 950, the volume of household and commercial waste is reduced so that more layers of waste can be deposited, which means more money for the system operator, according to Arjes. The twin shaft can be installed and removed quickly thanks to the quick-change system.

www.arjes.de

production. Prepared green waste is used for processing in composting plants. All metal contaminants are removed with the over-band magnet and the biomaterial is then screened. The generated commercial waste is shredded to reduce its volume to save transportation costs and landfilling, which are based on the material's weight and volume, providing double the benefit to customers.

Another example is Carmel Natural Products Ltd., which shreds composted material and green waste on

Haas – processing waste wood into biomass fuel

German waste disposal company BWE Balthasar GmbH was looking for a solution to process approximately 40,000t of waste wood annually into fuel for a biomass power plant. In a single-stage shredding process, wood chips of 3.1-4.7 in (80-120mm) with a minimum percentage of fines are to be produced. Haas supplied Tyron pre-shredder and the Alva star screen with oversize

MEET VIKING®

THE NEWEST SCRAPER FROM NATIONAL FLOORING EQUIPMENT

**PATENTED
DUAL LIFT
TECHNOLOGY**

**CLIMATE
CONTROLLED
CAB**

**EXTENSIVE
SAFETY
LIGHTING**

**ROPS AND FOPS
CERTIFIED CAB**

**49.5 HP
TURBO DIESEL
MOTOR**



**SEE VIKING®
IN ACTION**

**NATIONAL
FLOORING
EQUIPMENT**

Made in America Since 1968

NATIONALEQUIPMENTDIRECT.COM | 800.245.0267



recirculation. The Tyron features a twin-shaft system that is suitable for hard wood such as railway sleepers with solid iron plates, as well as a neodym cross-belt magnet. The extra-fine tool configuration (7/6-4) provides BWE with excellent wood chip and high throughput, according to Haas. The Alva star screen separates out oversize material, which is returned to the shredder by the integrated recirculation conveyor. The integrated screw conveyor collects and discharges the usable fraction.

www.haas-recycling.de

Lindner's Polaris 2800 fuels one of Europe's largest cement plants

Enerco – Energy Recovery commissioned a Lindner shredder from the Polaris series to shred high-calorific refuse derived fuels in Cyprus. Vassiliko operates one of the largest cement plants in Europe. To ensure the amount of energy needed to produce approximately 6,000t of clinker per day, they rely on Enerco's resource-saving alternative fuels. The shredder produces onsite fuel in 2-in (50mm) particles out of end-of-life tires, mixed and bulky waste, and waste wood.

Another novelty from Lindner is their patented SF synchronous fine cutting system. The angle between knives is changed so that they act like scissors, applying force to a smaller area. This, according to Lindner, increases the tools' impact while maintaining energy consumption. Also, the cutting edges of the shaft are not aligned in parallel. The shafts act like two Archimedean screws rotating in opposite directions. This intake increases throughput



and mixes the final fraction for a homogenous output.

www.lindner.com

New mobile screen, crusher and e-Power range from Metso Outotec

The new Nordtrack S2.5 mobile screen is a small size scalping screen designed for small job sites and a variety of applications. With a compact and light-weight structure, a two-deck screen and a selection of different screening media, it is a solution for construction contractors with frequent changes in site locations or as a rental unit. The Nordtrack 1908 mobile impact crusher features a design for smaller-sized material reduction job sites and accepts different kinds of feed material.

The new Lokotrack e-Power range brings the diesel-electric Lokotrack mobile crushing and screening units into one offering. The range includes 15 crushers and 6 screens. Thanks to the development actions to lower fuel consumption, the annual CO2 emissions of the Lokotrack equipment are 20,000t lower today compared to the situation before 2010.

www.recycling.metso.com



Second Rockster crusher at Tropic Mining & Quarry in Burkina Faso

Tropic Mining & Quarry SASU (TMQ), based in Burkina Faso, has been using a Rockster R900 impact crusher since 2008. To increase limestone processing, a R1100S closed circuit impactor has been added to their fleet. The impactors are used to crush dolomite limestone, which is used for production of cement. The plan is to produce 600,000t of final material per year. TMQ's R1100S also has a screening system, which consists of a screen box and return belt, to produce perfectly defined final product with an excellent quality.

www.rockster.at

Diesel-free with RM 120X hybrid

Israeli recycling and waste recovery firm Taha Zahir invested in a Rubblemaster RM 120Go! in 2018. Located in an enclosed hall, which makes low emissions essential, the crusher has been crushing C&D waste to produce road substructure aggregate. Taha Zahir has now added a second low-emission crusher—Rubblemaster's RM 120X hybrid, which can be diesel-electric and purely electric powered. The feed material with an edge length of up to 800mm is processed electrically to produce cuboid final aggregate of less than 1.26 in (32mm). Taha Zahir also ordered a dust suppression system and installed a wind



sifter on both crushers. Every day, approximately 1,000t of C&D waste, mixed with plastic, wood and textiles, are delivered to Kafr Qasim. The RM Go! principle has been developed for Rubblemaster's new Next machines. With machine communication lights, the user can see the system's current status. The RM 120X keeps the operator outside the danger zone during crushing. Information on the crushing process is displayed in the RM Go! Smart App.

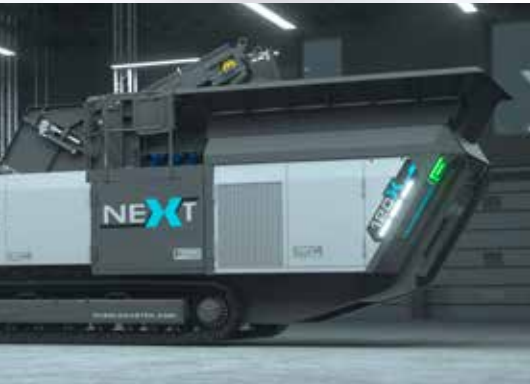
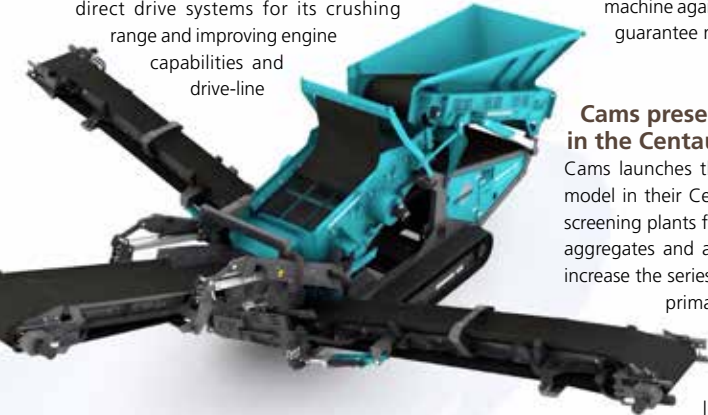
www.rubblemaster.com

Powerscreen reveals concept battery-powered screener

Powerscreen's electrification strategy includes a new concept for crushing and screening – the Eco-Warrior battery-powered screener – designed to combine the company's famed screening action with a simple, quiet engine with no after-treatment requirements. The required engine size has been cut in half compared with the diesel hydraulic unit, and the battery pack can mean emission-free running or give a power boost.

As part of Powerscreen's decarbonization challenge, the company has broadened its product range to reduce environmental impact by making its crushing and screening equipment more fuel efficient, using direct drive systems for its crushing

range and improving engine capabilities and drive-line



Another tool for fuel efficiency is Powerscreen Pulse telematics that, among many things, helps customers see how and where their machines are being operated. The Hybrid range now features more electric crushers/screeners, as well as models powered by combinations of diesel and electricity.

www.powerscreen.com

Komatsu Europe introduces new mobile jaw crusher

The BR380JG-3, powered by a Komatsu emissions-compliant diesel engine, has a power output of 213 hp (159kW) at 2050rpm. The machine incorporates a two-axis type deck vibrator for continuous flow of material to the two

stage grizzly separator bars. The semi-automatic feeding system incorporates crusher overload detection and automatic feed control. The BR380JG-3's expansive 42 x 21.6 in (1,065 x 550mm) jaw

opening

features tapered

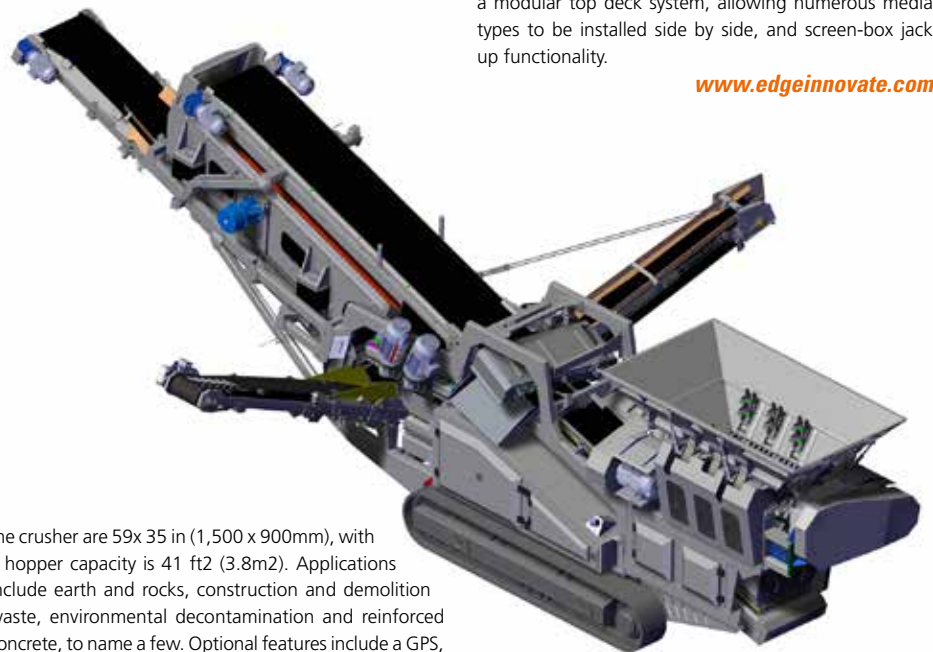
side plates and offers a maximum crushing capacity of up to 240 tons per hour. The BR380JG-3 features a one-touch start-and-stop function; a foldable ground-level maintenance access step; and more. The Komtrax telematics and the Komatsu Care maintenance program offer fleet management and support, protect the machine against misuse and, according to Komatsu, guarantee maximum efficiency and uptime.

www.komatsu.eu

Cams presents biggest model in the Centauro range

Cams launches the Centauro XL 150.56, the biggest model in their Centauro range of mobile crushing and screening plants for construction and demolition waste, aggregates and asphalt. The Centauro XL 150.56 will increase the series with a machine complete of a bigger primary shredder, screener and secondary

shredder with a productivity up to 250 tons per hour. The first machine has been sold in China and will be delivered in May 2021. The dimensions of



the crusher are 59x 35 in (1,500 x 900mm), with a hopper capacity is 41 ft² (3.8m²). Applications include earth and rocks, construction and demolition waste, environmental decontamination and reinforced concrete, to name a few. Optional features include a GPS, recirculation conveyor, dust suppression plant, and more. The series also comprises the Centauro 100.32, Centauro L 120.56, and Centauro L 120.56 APR.

www.camssrl.it

New wheel-mounted screener from Edge Innovate

The Edge SM186 wheeled mounted screener is a solution for applications such as recycling and soils, and incorporates an 18 x 6 ft (5.4 x 1.75m) two deck screen with interchangeable flip flow and scalper bottom decks, and numerous screen media options and configurations. Design features include a low-level feed hopper for loads from all three sides without the need of construction ramps, and 2- or 3-way splitting configuration. The control system features a sequential start/stop functionality.

Fitted with a tri-axle bogie with an ultra-underslung suspension complete with fifth wheel hook-up and air brakes, the Edge SM186 is easy to transport between sites. Operators can choose from different screen boxes including Edge Innovate's flip flow screen, scalping screen and rinser screen. Optional power sources include diesel/hydraulic, diesel genset or direct electric. The machine is available in a static chassis format. Other features include a modular top deck system, allowing numerous media types to be installed side by side, and screen-box jack up functionality.

www.edgeinnovate.com



New Tana 440 shredders

Customer feedback has spurred a number of improvements to Tana 440 shredders. The model 440DTeco shredder is more versatile, more productive, and easier to use, with a frame structure that allows more space for material flow underneath the rotor. In addition to the 33-knife rotor, there is an option of 44 knives which increases capacity/output in tire shredding by 25%. A variety of cleaning combs are available for different purposes.

In addition, the conveyor system has been redesigned to include transfer and discharge conveyors, both with adjustable speed. The frame of the discharge conveyor is self-supporting enabling angle adjustment that self-calibrates depending on the discharge conveyor angle. An over-band magnet has been repositioned higher, and the space between the magnet conveyor and the discharge conveyor can be adjusted during operation. The Tana Control System helps the user find the most efficient settings for each process. The shredders are available as track, trailer and electric models.

www.tana.fi

New products from Keestrack announced for 2021

The Keestrack I4e tracked mobile reversible impact crusher can be used in the secondary crushing of rock and recycling building materials. The design with a large variable crushing chamber, rotor and electronically monitored hydraulic gap adjustment allows feed sizes of up to 9.8 in (250mm) and ensures end products of up to -.08 in (-2mm) in closed circuit. Secondary and tertiary crushing can be combined in one mobile solu-

tion. The system features a diesel-electric drive concept and weighs 41t. The drive unit with 600-hp (447kW) diesel engine and 300kVa generator is designed as a removable drop-off module.

Other new Keestrack products include the battery-powered S5e track mobile stacker. The 23m stockpile conveyor is equipped with a 22.8kWh lithium-ion battery pack that provides energy for self-sufficient electrical operation of tracks and lifting hydraulics. This enables the 12.7t machine to be independently unloaded and loaded, moved and positioned on site. Finally, the Keestrack F6 is the company's first production model of new road milling machines, featuring a new milling drum unit with a specific pick design. The working width of the 30t model with 600-hp (447kW) Cummins engine is 78 in (2,000mm), working depth up to 12.6 in (320mm).

www.keestrack.com

Kleemann announces new mobile jaw crushing plant and more

The Mobicat MC 110(i) Evo2 mobile jaw crushing plant has an hourly output of up to 400 tons per hour and can be used in quarry and recycling applications where emphasis is on coarse crushing. The crusher features a two-stage overload system which prevents blockages and material bridging. If uncrushable material enters the crushing process, the CSS opens two times faster than with the predecessor plant or, as an option, up to forty times faster. Other features include the Continuous Feed System and an extra-long articulated crusher jaw.

Kleemann also offers the mobile classifying screens

Mobiscreen MS 1202 and MS 1203 with a feed capacity of up to 750 tons per hour. They are available with two or three screen decks and have screening surface areas of 129 ft² (12m²) in the upper and middle deck and 118 ft² (11m²) in the lower deck. The feed hopper has a holding volume of 353 ft³ (10m³). Both screens can be combined with crushing plants from the Kleemann Evo and Pro series. They driven by hydraulic power units, and the Dual Power option allows them to be driven by electric power.

Kleemann has also launched new Mobibelt stackers in three sizes and designs. The Mobibelt MBT 20 has a crawler chassis and a belt length of 65.6 ft (20m). With the MBT 24, Kleemann offers a further stacker with a crawler chassis and a length of 78.7 ft (24m). The MBW 15 has a conveyor belt length of 49 ft (15m), and can be moved with a tractor.

www.wirtgen-group.com



Meet Senya Tech's Micro Crushers

Pioneering a new category in Construction Equipment, Senya Tech is excited to introduce a new revolutionary line of Micro Crushers crushing machinery. Along with parent company, SANME, Senya Tech has been in the rock crushing business for more than 60 years, primarily in the mining and quarry business with its larger machines and custom-designed crushing plants. The new Micro Crusher jaw-crushing machine is designed to be pulled behind a .75t pickup truck and produce up to 30 tons per hour of beautiful finished aggregate product. All this is accomplished with an electric motor and no hydraulics. With the disposal costs of demo product and "buying back" of base aggregate almost reaching at least \$1000 per truckload, these machines can pay for themselves very quickly. Small wonder the Micro Crushers generated so much excitement at last year's Conexpo-Con/Agg show. Comparably sized impact crusher and screen plants are on the way. For now, check out senyacrushers.com for pictures, video, product specs, package deals, and all the Senya Tech has to offer.

www.senyacrushers.com



YOUR
COMPLETE
RECYCLING
RANGE

CAMS

camssrl.it

FROM MORE THAN 30 YEARS...

... THE ONLY ELECTRICAL CRUSHING
& SCREENING PLANT

imagination.it

God created
the heavens and
the earth.
VTN helped him



DISCOVER THE
JAW CRUSHER BUCKET
FB SERIES

VTN
A DIFFERENT WAY

vtneurope.com

shows

WOC's Back to

It's Back, Baby: World of Concrete is First Major Post-Pandemic Show in Las Vegas.

World of Concrete will be the first large show to be held at the partly renovated Las Vegas Convention Center on June

8-10. It will also be one of few construction trade shows anywhere in the world to take place during the first half of 2021.

Drastic decrease in number of exhibitors

There is little doubt that this year's edition of World of Concrete will be different from past years. At press time, the show had 599 registered exhibitors, less than half of 2019's record 1,500 exhibitors. In 2020, when the pandemic had just started in Asia, the number nevertheless dropped to 927.

Because overseas travel to the U.S. remains restricted, many foreign manufacturers will rely on their U.S.-based representatives to staff exhibits. Others will likely sit this one, and

hope for better conditions in 2022. The Nevada sun in June will probably also keep most of the visitors inside the halls.

Still, the decision to stage even a scaled-down World of Concrete offers great value to the construction industry. To be sure, the environment will be different. The State of Nevada's new directive requires meetings, trade show, and entertainment venues to certify through the state's Department of Business and Industry that they will follow strict health and safety requirements and protocols. This will see adherence to the prevention principles that have remained consistent, namely maintaining safe social distancing, wearing face coverings, and practicing good hygiene and cleaning measures.



WORLD OF CONCRETE®

Coming to Vegas!

"Las Vegas has been the top convention and meetings destination for many years," says Nevada Governor Steve Sisolak. "We pride ourselves on providing the best facilities, the best service, and now the safest. We've been cautious, but very focused on reopening Las Vegas in the safest way possible for you, our treasured customers, our valued employees and our entire community."

Those sentiments are echoed by Steve Hill, president and CEO of the Las Vegas Convention Center. "We are thrilled to be welcoming World of Concrete exhibitors and attendees back to Las Vegas as our first major convention to return to our destination," he says.

Mass vaccination programs a hope for making business start kicking off again

Thanks to mass vaccination programs across the world, there is hope that the overall decline in COVID-19 cases in many parts of the world will lead organizers to stage other shows later in the year. But with many countries facing multiple surges, the next several months will have to be approached with caution. Should World of Concrete be able to return to its usual wintertime schedule next year, some social distancing and face-cover requirements may still be in place. And while Germany's massive Bauma construction trade show is still planned for 2022, organizers have postponed the event six months, to late October, in

the hope of minimizing attendance concerns. But for now, let's look forward to at least a little bit of normalcy with World of Concrete 2021. PDA will be on hand to cover the event, and we invite visitors to stop by our booth with number W2917 in the West Hall.

"World of Concrete has always been a great show for us and one of the best globally. We have been covering it and exhibiting at it for decades and we will not miss it this time either", says Jan Hermansson, publisher of PDA Magazine.

A selected list of exhibiting companies at World of Concrete 2021 can be found on the following spread.

www.worldofconcrete.com



Probably not how the registration will look this year.





The renovated entrance at Las Vegas Convention Center.



A Selected List of Exhibitors at World of Concrete 2021

Exhibitors	Booth	Gensco Equipment	N2929
Advanced Equipment Inc	W952	GSSI	W753
American Shotcrete Asso.	N2405	Hatz Diesel	N2512
Antraquip Corporation	N2644	Haver & Boecker USA, Inc.	N653
Merlo (AMS)	W941	Hilti, Inc.	D1202
Astec	N837	Hilti, Inc.	W3121
AUSA Corporation	W1119	Husqvarna Const. Prod	D1224
Aquajet Systems	W703	IMER USA Inc	N913
Avant Tecno USA	W713	Inland Diamond Products	N2941
Bay-Lynx Manufacturing	W2053	IGGA	W2624
BHS-Sonthofen	N648	Jetstream of Houston	W511
BlastPro Manufacturing	N2151	Jon-Don Inc.	D1235
BlastPro Manufacturing	N2413	LISSMAC Corporation	D1210
Vanguard	D1242	Makinex USA LLC	N2837
Britespan Building Systems	N545	Advanced Floor Products	N719
Brokk Inc	W703	National Flooring Equip.	N2107
Canycom USA, Inc	W3303	New Grind Inc	D941
CASE Construction Equip.	W3103	Pearl Abrasive	N1813
Concrete Saw. & Drill. Asso.	W649	PR Diamond Products, Inc.	D1718
Conjet AB	W641	Quick Attach Attachments	W2931
CS Unitec Inc	W1009	Runyon Surface Prep Rent.	N3151
Cutco	N645,	PDi Magazine/PDa Mag.	W2917
	W2264	Concrete Products	N448
DARDA	W703	Solo Incorporated	N2177
Diamond Blade Wareh.	N2655	Stanley Black & Decker	W1131
Diamond Outfitters	N2643	STIHL Inc.	W2709
Diamond Products	D1402	Sunward America	W1720
Diamond Products	D1702	Superabrasive, Inc.	N2305
Diamond Products	W741	Sysdyne Technologies, LLC	N1863
Digga North America, LLC	W3115	Terex	WES01
Digga North America, LLC	W3333	Terrazzo & Marble	
DITEQ Corporation	D1610	Supply Companies	N1956
Doosan	W1302	Terrco, Inc.	N2947
Dustcontrol USA	N1063	Trojan Tracks USA Inc	W3018
Eagle Industries of LA, LLC	N2805	US Saws	N963
E-Z Drill Inc	W2565	Vacuworx	W1608
E-Z UP	W2753	World Diamond Source	N921
Fogco	N2077	Xtreme Engineered	
Diamond Vantage, Inc.	N3052	Floor Systems, Inc.	N2877

Demolition Attachment Tooth-Wear Templates Can Aid in Preventive Maintenance

Properly maintaining demolition attachment teeth maximizes performance and optimizes the life of replacement parts. As teeth become worn, they need to be rotated, built-up or replaced. To help customers determine and monitor how far processor teeth have worn from their original shape, Genesis now offers Processor Tooth Build-up Templates. Available for the Genesis GDR, GDT Razer, GRX Razer X, LXP®, GMP, and GCP demolition tools, each template is sized and formed to that tooth's original shape and features three lines that indicate progressive wear levels. Simply place the template over the tooth to determine the amount of wear and build-up required or if replacement is needed. Genesis tooth build-up templates simplify maintenance by clearly showing tooth wear levels and help prevent attachment damage that may occur due to delayed tooth maintenance.

www.genesisattachments.com



New Lavina Elite Dust Extractors from Superabrasive

With industry-best technology and features, the all-new Lavina Elite V32 Dust Extractors take dust collection to a new level of performance and productivity. Available in both propane (V32GE - 470 cfm) and electric models (V32E - 490 cfm, 220V or 480V), the V32 features a four-stage dust collection system that dramatically increases cleaning efficiency. An integrated pre-separator captures the large particles and extends filter life, while a cyclone around the conical filter captures the mid-sized particles. A conical

M-class filter with high air permeability and large filter area provides better suction and longer working time between cleaning intervals. An H13 HEPA filter serves as the final filtration point, resulting in capture of 99.95% of particles sizes 0.15-0.23 µm. Other features include an integrated emergency lamp that reminds the operator to clean filter, and option to upgrade to automatic cleaning, and a lighter and more compact body design.

www.superabrasive.com



GEM Attachments Joins VTN's Americas Distributor Network

VTN Europe has announced the appointment of a new distributor, GEM Attachments. The Cleveland, Ohio-area company's machine and spare parts inventory is part of VTN's growing network of distributors that support sales and service across the Americas, ensuring the highest standard of professional machine support and parts availability.

VTN develops and manufactures some of the toughest and most innovative excavator attachments on the market. Made in Italy, VTN's products are distinguished by their heavy-duty construction, attention-to-detail, and innovative design. The company is determined to create durable products with unique applications that save customers time and money. GEM Attachments is a manufacturer of attachments for wheel loaders, excavators, and skid steers. The workshop is fully equipped and capable of dealing with all types of requirements including, services, repairs, and attachment set-up.

www.vtnamerica.com



Hilti Innovations Honored

Several new Hilti products recently received iF and Red Dot awards based on their design quality and degree of innovation. The Jaibot construction site robot, designed to drill in ceilings and perform work based on Building Information Modeling (BIM) data, received the Red Dot design category's Best of the Best award, and was certified by the international jury as having a groundbreaking design. An additional Red Dot award went to the construction site robot in the Smart Products category, which evaluates networked and digital products with a focus on their intelligent features.

The iF and Red Dot competitions also awarded seals of quality to a number of other Hilti innovations. They include the PMD 200 jobsite layout tool, which features intuitive operation that makes it easier, and faster, to determine and lay out fastening positions; and the compact SF 4-A22 cordless drill driver, which is particularly suitable for working in hard-to-reach places. Also honored in both competitions were the TE 500-AVR breaker and the TE 70-ATC/AVR hammer drill, which both have powerful performance designed for heavy-duty work. An iF jury award also went to the VC 20M-X and VC 40M-X group of universal vacuum cleaners, which not only handle dust extraction but also the removal of drilling slurry.

Additionally, Hilti's Jaibot received a BIM Champion Award 2021 in the buildingSMART competition, which is sponsored by three German federal ministries. As part of an award-winning construction project, the Jaibot was able to demonstrate that the drilling robot's digital planning and automated execution of the working steps can significantly increase efficiency while cutting the time required for the work in half. At the Swedish Nordbygg, Northern Europe's largest construction trade fair, Hilti's EXO-01 human augmentation system EXO-01 was awarded the gold medal as the most innovative product launch. The jury particularly acknowledged the role of EXO-01 in improving health protection and safety on construction sites. The passive exoskeleton significantly reduces symptoms of fatigue in serial or continuous activities performed above shoulder level and in overhead work.

The product design awards are not the only sign of Hilti's innovative strength. Based in Lichtenstein, the company once again ranks among the top 100 patent applicants in the current list of the European Patent Office. In 2020, Hilti filed 287 patent applications, once again ranking among the top technology companies. Last year also saw the Hilti Group launch 74 new products and services and make significant investments in strategic initiatives despite the COVID-19 pandemic and the resulting decline in sales.



How Long Does it Take to Break a Habit?

During difficult times it may seem easier to "just get on with it," and use the tried-and-true rather than attempt doing something new. But last year has taught everyone to adapt, which inevitably led to the need to embrace change.

First, consider Legarza Exploration & Construction, which has specialized in remote locations jobsites since 1992. Having tackled many sites without access roads, they are well aware of the struggle of bringing their equipment in, the time and energy it takes to build the road to reach the actual site. Their meticulous planning had helped them succeed in the past, even if it hasn't been always foolproof or cheap.

Legarza eventually reached a point when money lost by waiting for aggregate and other material to arrive at their remote site forced them to turn down some jobs in a dicey economy. They realized the need for a crusher and a screener with the portability to easily reach jobsites, even those without roads.

Bill Arthur, the company's owner, admits to being "pretty new to the bucket," but he has already seen the benefits MB's equipment brought to their jobsite. He says the buckets "save time and money, primarily on [their] budget" by eliminating material purchasing and handling expenses.



Legarza is now using what's available to create soft roads to reach their jobsite. With MB's BF80.3 crusher bucket, they reduce the larger stones and river rock from the bank to either a 3/4 in minus or a 3 in minus, and the MB-S18 screening bucket is used to separate the fine portion laying around, faster and cheaper process.

At the other extreme, consider a project underway at largest commercial port in India. Getting the job done quickly is the requirement here, and the MB Crusher screening bucket has proven to be the ideal machine to help to keep clear the loading dock from materials while reducing the number of machinery and operators.

Installing MB's attachment on the backhoe previously used to move material around created an instant screening plant. Now, when the material is mixed in wrong ratios during the unloading process or when lumps forms due to moisture penetration, the contractor simply uses the screening bucket to process and reclaim the material in a matter of minutes. What's more, the screening bucket can be easily moved from one place to another to allow the continuous passage trucks and containers coming and going from the port area. The result is maximum productivity, faster operations, and a better overall job. And that's a change anyone should welcome.

www.mbc crusher.com

Epiroc to Acquire South Korean Hydraulic Breaker Manufacturer

Epiroc has agreed to acquire D&A Heavy Industries, a South Korean manufacturer of hydraulic breakers. Based in Seoul, South Korea, D&A manufactures and sells hydraulic breakers for customers involved in construction, demolition, rock excavation, quarrying, and infrastructure. "The acquisition of D&A Heavy Industries will strengthen our leading position on hydraulic attachment tools for the construction industry and supports our long term growth strategy," says Helena Hedblom, Epiroc's president and CEO. The company, which has a production facility out-

side Seoul, has about 60 employees and had revenues in 2020 of about EUR21M. The acquisition is expected to be completed by mid-summer 2021, with D&A becoming part of Epiroc's Tools & Attachments division. The company will continue to be operated from South Korea, and retain its brand and channels.

www.epiroc.com



Blount, Inc. Rebrands as Oregon Tool

Blount, Inc. unveiled a new corporate name that position for growth while honoring its heritage: Oregon Tool. The global manufacturer of professional grade cutting tools and equipment selected Oregon Tool as its new name to harness the pow of its pioneering origin story.

The company was founded by Joe Cox in 1947 in the basement of his Portland, Ore., home. Inspired by nature — a timber beetle larva to be exact — Cox studied the creature to better understand how to cut wood more efficiently. He designed a new saw chain that was modeled after the larva's alternating C-shape jaws. He called it the "Cox Chipper Chain" and started the Oregon Saw Chain Corp. to produce it. Cox's saw chain revolutionized the timber industry, and it remains widely used today around the globe.

Over the years, the company has grown into a multinational organization with numerous acquisitions and mergers. Today, the newly named Oregon Tool is the world's #1 manufacturer of saw chain and guide bars for chainsaws and diamond saw chain for concrete and pipe, a leading manufacturer of agricultural tractor attachments, and the leading original equipment manufacturer (OEM) supplier of first-fit and replacement parts.

Oregon Tool CEO Paul Tonnesen says that because Oregon is the undisputed leader in the global bar and saw chain market, "we are confident the inspiration and momentum inherent in the name Oregon Tool will help our organization achieve our goals in the years ahead, including aggressive growth across brands and launching into adjacent categories."

In addition to launching into adjacent categories, the company's growth strategy includes: evolving its branding across product lines, building on its legacy of innovation and leaning into global stewardship to promote the sustainability of the industry as well as to support those who work in it.

www.oregontool.com

OREGON TOOL

MB Crusher Introduces MB-HDS523 Shafts Screener

Two years after launched a new range of shafts screeners, MB Crushers introduces the line's "big sister"—the MB-HDS523 shafts screener bucket. The unit is compatible with 30t-45t excavators, and designed for sectors where power and sturdiness are essential, such as in quarries, or to move, sift, and aerate tons and tons of earth for excavating, earthmoving, and large trenching projects.

The MB-HDS523 is the only HDS unit with five shafts positioned to ensure a greater production rate and processing speed. The "V Shaft System"'s design precisely creates a simultaneous dual screening effect and increases production.

Everything in the new MB-HDS523's design maximizes results. The concealed comb allows material to enter and flow through the rotors without jamming, while a removable front upper casing gives the unit a greater closing angle and increase production. Powered by two motors to ensuring consistent and quick performance, the MB-HDS523 screener is solid, durable, and suitable for demanding construction sites and heavy workloads. The parts that are subject to wear are protected by reinforced

Hardox steel slab, and the bracket and frame are also thicker, making it a well-performing machine. The MB-HDS523 shafts screener comes with a centralized greasing system to simplify and speed up maintenance operations. As with other models in the range, the shafts are easily switched out, and can be replaced on-site and in a few minutes. The patented system firmly holds the rotating system, and the rotors can be easily extracted and repositioned.



Brokk Relocates Washington State Facility for Increased Service

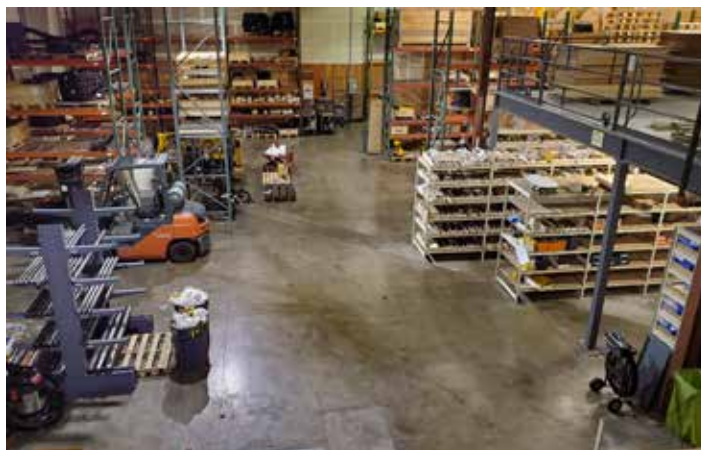
Brokk, the world's leading manufacturer of remote-controlled demolition machines, relocates its Monroe, Wash. headquarters, consolidating service for customers in western North America. The move brings administration, sales, training, parts, and service under a single roof for better customer response and a more streamlined operation. The new facility provides an additional 7,000 m² (650 m²) over the company's former locations, creating more room for in-house mechanical training for customers. The move also increases equipment and parts inventory for both Brokk demolition robots and Hydrodemolition equipment from sister company Aquajet, providing greater availability and faster delivery throughout the region. The new facility will function as the North American headquarters for Brokk and Aquajet and the main parts distribution center for North America. The address is 17321 Tye Street SE, Suite B, Monroe, WA 98272.

"Brokk has grown exponentially in North America over the years — expanding to include three facilities and a sales network that reaches every corner of the continent," says Lars Lindgren, president of Brokk Inc. "We're always looking for ways to better support our customers, such as continued

training. The new facility gives us ample room to stock more inventory and offer more services to better serve our West Coast customers."

The added space at the new facility allows Brokk to increase in-house training offerings for both robotic demolition and hydrodemolition equipment. Brokk has always offered on-site training with each machine commissioning and customized training through their facilities in Monroe and Stanhope, N.J., and at the Demonstration and Service Center in St. Joseph, Mo. The new facility accommodates classroom space and a state-of-the-art maintenance bay, similar to the amenities available at the Demonstration and Service Center. This opens up greater opportunities for personalized in-depth mechanical training on in-stock Brokk and Aquajet equipment from an experienced technician. With the relocation, West Coast customers will now have convenient access to courses tailored to their teams and unique applications to increase safety, productivity, and machine utilization.

In addition to increased training options, the new facility increases inventory capacity for an array of standard and spe-



cialty parts for all Brokk models — from the compact .6-ton Brokk 70 to the heavy-duty 11-ton 900 — as well as older Brokk models. The facility also houses Aquajet Hydrodemolition robots, parts, and accessories. Additionally, bringing all departments together optimizes logistics for faster parts processing. Most orders for in-stock parts placed before 3:45 p.m. PT are available-overnight to customers across the country, minimizing unscheduled downtime.

www.brokk.com





GIVE YOUR BUSINESS THE UPPER HAND

To build a stronger, more profitable business, you have to get hands-on. Real knowledge comes from testing the latest equipment. From touching game-changing technologies. From getting your hands dirty in interactive trainings and skills competitions. **World of Concrete** is the commercial construction industry's largest annual international event for concrete and masonry professionals and puts these kinds of immersive opportunities at your fingertips — join your community here and experience real, tangible results.

Hands down, the best decision you'll make.
Register now at worldofconcrete.com



JUNE 8-10, 2021

EDUCATION: JUNE 7-10, 2021

JANUARY 18-20, 2022

EDUCATION: JAN 17-20, 2022

**LAS VEGAS CONVENTION CENTER
LAS VEGAS, NV, USA**

Durable Performance



Increase the capabilities of your concrete cutting and demolition toolbox. Operate a full range of Pentruder High Frequency equipment simply by connecting the same Pentpak, remote control, motor, and cables to a wall saw, a wire saw or a heavy duty core drill.

All Pentruder equipment is Made in Sweden. We produce precision parts in-house, from the best materials, in state of the art production machines. With over 35 years of experience from designing concrete cutting equipment, we know how to build high performance, durable systems.

Visit our website for more information & contact details to our distributors:
www.pentruder.com

Or check out our facebook page: www.facebook.com/pentruder
or Instagram: [pentruder_official](https://www.instagram.com/pentruder_official)

Pentruder[®]
CONCRETE CUTTING SYSTEMS

Designed and manufactured by:
Tractive AB | Gjutargatan 54 | 78170 Borlänge | Sweden
Tel: +46 (0)243 221155 | E-mail: contact@pentruder.com
www.pentruder.com

