

# PROFESSIONAL DEMOLITION AMERICAS

Your Gateway to North, Central and South America

Volume 5 • Issue 2 • 2017



**REVIEW**  
pages 18-21

**Business**  
Atlas Copco  
Rolls Out First  
Product at New  
S.C. Plant  
page 6

Cudney Named  
Lissmac's  
Sales Director,  
Construction  
Technology  
page 6

AEM Elects  
New Director:  
Brad Boehler  
of Skyjack  
page 6

**Feature**  
Break It Up!  
page 11

Now Dust  
Sucks Even  
More  
page 11

**News**  
New GDT 390  
Razer from Genesis  
Attachments for the  
Biggest Jobs  
page 36

Merit Expands  
Global Reach  
with Three New  
Distributors  
page 40

**Feature:**

# Demolition Excavators!

page 32-34

World of Concrete Really Kicks Up the Dust page 20

# The result of 40 years of innovation in demolition.

## Imagine what we can accomplish in the next 40.



INTRODUCING:  
**120D**

### Relentless Innovation Since 1976.

In 1976 we promised to provide ultimate demolition power for the most challenging jobs on earth. 40 years' worth of demolition robots later, we have kept that promise. By constantly listening to our users from around the world and responding with innovative solutions, we are able to advance the state of the art

year after year. Introducing our newest addition: The Brokk 120 Diesel – The ultimate compact, one-ton diesel-powered demolition robot. A remote-controlled demolition machine that is completely 'wireless' and can go where nothing else can go.

Discover a more powerful future at [www.brokk.com](http://www.brokk.com).



# **BROKK**<sup>®</sup>

Brokk Inc. | Monroe WA | 1-360-794-1277 | [info@brokkinc.com](mailto:info@brokkinc.com) | [www.brokk.com](http://www.brokk.com)

**Professional Demolition  
 Americas Magazine**

**Postal address:**  
 Riverbends Publishing, LLC, PDa Magazine,  
 P.O. Box 552, Nokesville, VA 20182, USA

**Phone:** +1 703 392 0150

**E-mail Editorial Office:**  
 editorial@pdamericas.com

**Web Site:**  
 www.pdamericas.com

ISSN Registration: ISSN 1650-979X

**EDITORIAL STAFF**

**Senior Editor:** Jim Parsons  
 jim.parsons@pdamericas.com

**Editor-in-Chief:** Jan Hermansson  
 jan.hermansson@pdamericas.com

**Assisting Editor-in-Chief**  
 Anita do Rocio Hermansson  
 anita.hermansson@pdamericas.com

**Editor North America:** Jim Parsons  
 jim.parsons@pdamericas.com

**Editor South America:** Luiz Carlos Beraldo  
 luizcarlosberaldo@gmail.com

**Junior Editor:** André Hermansson  
 andrevinicusgogola@gmail.com

**CORRESPONDENTS**

Andrei Bushmarin  
 andrei.bushmarin@pdworld.com

Mikael Karlsson  
 mikael.karlsson@pdworld.com

**SALES**

**Sales Director North & South America 1**  
 Darren Dunay  
 Riverbends Publishing, LLC, PDa Magazine  
 P.O. Box 119, Westwood, NJ 07675, USA  
 Phone: +1 201 781 6133,  
 Fax: +1 201 664 1829  
 darren.dunay@pdamericas.com

**Sales Director North America 2**  
 Andrei Bushmarin  
 Phone: +7 921 949 27 81  
 andrei.bushmarin@pdworld.com

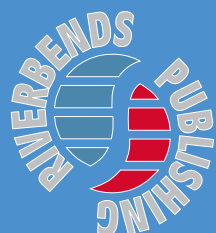
**Sales South America 2**  
 Eduardo Kubrick  
 Phone: +55 11 999494544  
 eduardo.kubrick@pdamericas.com

**Sales Europe and rest of the world**  
 Phone: +46 8 585 700 46  
 sales@pdamericas.com

**Publisher**  
 Jan Hermansson

The magazine PDa, Professional Demolition Americas is published four times per year in North and South America. The annual airmail subscription rate is US\$ 45. All subscription correspondence should be directed to: The subscription department, Riverbends Publishing, LLC, P.O. Box 552, Nokesville, VA 20182, USA. Or sent by e-mail to info@pdamericas.com. PDa is mailed by second class postage. ©Copyright Riverbends Publishing, LLC, 2013-2017. Printed in the US.

Cover photo: Volvo Construction Equipment



*Contents*

<b>4</b>	<i>Editorial</i> Aging in Place: Not the Best Way to Approach the Future	<b>26</b>	Now Dust Sucks Even More	<b>38</b>	Pulse Technology™ - The First Attachment Performance Monitoring System
<b>6</b>	<i>Business</i> Atlas Copco Rolls Out First Product at New S.C. Plant Cudney Named Lissmac's Sales Director, Construction Technology Division Lissmac Launches Construction Technology Division AEM Elects New Director: Brad Boehler of Skyjack	<b>32</b>	New Demolition Excavators: Where Size Does Matter	<b>40</b>	New Quick Coupler for Bobcat E25 to E55 Excavators Talbert Manufacturing Introduces 55-Ton Extendable Trailer New Silent Hydraulic Motors Integrated in Dynaset Products Rockster at Conexpo 2017
<b>8</b>	Timothy Hansen Named General Manager at Intertractor America Corporation ROMCO Equipment Co. Joins Atlas Copco Construction Equipment Dealer Network HTC DURATIQ wins Most Innovative Product Award at World of Concrete 2017 Program Set For 8th Shingle Recycling Forum	<b>18</b>	<i>Shows</i> Bigger and Better: Conexpo 2017 Delivers on Lofty Pre-Show Expectations	<b>46</b>	Atlas Copco's New MB 1650 Breaker: Lower Weight, Same High Performance Streamlined Genesis Handling Grapple Reduces Maintenance
<b>11</b>	<i>Feature</i> Break It Up!	<b>22</b>	<i>News</i> CSDA Elects 2017 Officers and Board of Directors U.S. Construction Employment Up Due Solid Demand	<b>47</b>	Pentruer's New HFI System Launched
<b>16</b>	Best Practices for Maintaining Petrol-Powered Motor Drills and Breakers Hydraulic Breakers in Action: Two Indeco HP 5000 ABFs for Mexico's Longest Tunnel An Indeco HP 25000 Takes on the Ballast Challenge Okada Releases Its Largest-Ever Breaker	<b>24</b>	ARCO Articulating Multi-Purpose Truck Blastrac's New Attachable Transport Dolly for Ride-On Scrapers Atlas Copco Unveils Complete HiLight Range	<b>42</b>	<i>Reports</i> Great Success for the Aquajet Hydrodemolition Days 2017
		<b>30</b>	Wacker Neuson at Conexpo 2017: Taking A Look Into the Future MB Crusher's Smallest Model Gets an Upgrade Merit Expands Global Reach with Three New International Distributors	<b>48</b>	<i>Site Report</i> Hands On Demolition
		<b>36</b>	Brokk Introduces Powerful 500 Demolition Machine	<b>50</b>	Innovative Four-Blade Genesis Rail Breaker Reduces Jaw Wear SRX-150 Green Cut Early Entry Saw OilQuick Warns of False Products Meet Bella, Klindex' New Floor Polisher
		<b>38</b>	IROCK Releases Closed-Circuit Impact Crusher with Small Footprint, High Productivity New GDT 390 Razer from Genesis Attachments for the Biggest Jobs		

# Aging in Place: Not the Best Way to Approach the Future

Face it. Getting old stinks.

Most every Baby Boomer, and probably more than a few “elder” Generation Xers, feels that way when a new ache or pain settles in. For some, it’s the cacophony of cracks and pops that accompanies the daily ritual of getting out of bed. Others may wonder what happened to the stamina that once got them through long days on the jobsite. (I could tell you all about the sacroiliac joint that ruined my winter and spring. But I know full well nobody really wants to hear about it, so [grits teeth] I’ll get on with this story.)

Of course, growing old beats the proverbial alternative. And occasionally relying on a pain reliever to get through the day or night seems a small price to pay for being able to continue earning a living, and doing most, if not all, of the activities we enjoy. But the fact that so many people can relate to this problem also indicates that if we’re getting old, so too is the construction industry. And the Millennials—that next generation of workers and leaders who are supposed to step in so that their elders and retire to the RV, the home workshop or the easy chair—aren’t materializing at the employment desk in sustainable numbers.

Fortunately, there remain a sizeable number of older, experienced workers willing and able to stay on the job. Equipment manufacturers are helping with ergonomic features that dampen vibrations and make tools easier to hold and maneuver. But eventually, someone else will have to take over the controls. And those people are needed now, for getting the most from these tools and machines requires time and experience—a learning curve that can’t be compromised without taking a measure of quality and productivity with it. Now, you can lament about this situation (along with those various physical ailments), or you can do something about it.

The best way to pique a young person’s interest in the construction trades—including concrete work—is to let them learn about those jobs at an early age. There is certainly no shortage of opportunities—in-school career days, collaborations with vocational education programs, organized field trips to job sites, and formalized activities such as the ACE mentor program.

But don’t expect young people to be impressed with a simple “show and tell.” Young people are surrounded by all kinds of stimuli competing for their attention. It’s up to contractors to be showmen of sorts, and creatively make an impression that will stick with the kids as they get older and start to think about what they want to do with their lives.

Maybe it’s the feat of breaking up a chunk of concrete with just a couple or hammer blows, or using that high-excavator display to make a day’s work an 8-hour video game session. Maybe it’s creating a floor so perfectly even and slick that you can race model cars on it, or using a drone to show how a task in one corner of a jobsite interrelates with all the others. If coming up with ideas is difficult, ask others in the business, or perhaps those who may have a peripheral familiarity with your work. There are also plenty of idea-sharing forums, from the Concrete Cutting Nutters group to a simple YouTube search. And if what seems like a clever pitch falls flat, and the kids are left staring at their phones, try something else. They push RESET on their video games after a defeat, after all. You can too. Otherwise, you and your concrete business face a very creaky, achy future.

**Jim Parsons, Senior Editor**  
[jim.parsons@pdamericas.com](mailto:jim.parsons@pdamericas.com)



# LAVINA

by  SUPERABRASIVE

# THE LEADER

IN PROPANE GRINDING & POLISHING EQUIPMENT

## TWO **NEW** LARGE PROPANE GRINDERS

**IDEAL FOR PROJECTS WHERE POWER IS NOT AVAILABLE!**

### L38GR-X

38" work path with 3 x 13.2" heads.

Combines the convenience of a remote-control with the flexibility and efficiency of a propane engine.

### L32G-X

32" work path with 6 x 9" heads.

Ideal for floor prep & heavy grinding - use it with 3 heads only, and fast polishing - use it with 6 heads.



- ✓ POWERFUL KAWASAKI FX921V, 31 HP, 999 CC
- ✓ BUILT-IN WEIGHTS & ADJUSTABLE GRIND PRESSURE
- ✓ CHAIN-DRIVEN FORCED PLANETARY DRIVE
- ✓ EASY TO USE AND MAINTAIN

[www.superabrasive.com](http://www.superabrasive.com)



**DYNASET**  
HG HYDRAULIC GENERATOR  
POWERED BY HYDRAULICS  
ENJOY THE SILENCE  
THE NEW SILENT MOTORS ARE HERE

**HYDRAULIC EQUIPMENT FOR MOBILE MACHINERY**

<p>GENERATORS VARIABLE GENERATORS WELDING GENERATORS MAGNET GENERATORS MAGNETS AIR COMPRESSORS POWER BOOSTERS INSTALLATION VALVES VIBRAS</p>	<p>POWER WASHERS STREET WASHING UNITS PIPE CLEANING UNITS DUST SUPPRESSION DRILLING FLUID PUMPS FIRE FIGHTING SYSTEM BIN WASHING SYSTEM POWER TAKE-OFF ETC.</p>	
------------------------------------------------------------------------------------------------------------------------------------------------------------------------------	-------------------------------------------------------------------------------------------------------------------------------------------------------------------------------------------------	-----------------------------------------------------------------------------------

**DYNASET** | [www.dynaset.com](http://www.dynaset.com) | [info@dynaset.com](mailto:info@dynaset.com) | tel. + 358 3 3488 200

**Atlas Copco Rolls Out First Product at New S.C. Plant**

Atlas Copco has produced its first piece of equipment, an XAS 185 portable air compressor, at its new production facility in Rock Hill, S.C. The compressor is the first product of Atlas Copco's wide range of equipment, including generators and stationary compressors that will be produced at the plant, which officially opened in February 2017.

Atlas Copco built the facility to enhance its support for the North American construction market. The 180,000-ft<sup>2</sup> (16,723m<sup>2</sup>)

**Below Atlas Copco engineers, product managers, and production crew celebrate the first compressor to roll off of the production line at the company's new Rock Hill, S.C., plant.**



plant is Leadership in Energy and Environmental Design-certified, and serves as the production and assembly facility for Atlas Copco's North American Construction Technique division. Several Atlas Copco team members commemorated the event by signing the compressor as it exited the production line. The compressor will be a reminder of the hard work and dedication the entire Atlas Copco team puts forth to bring sustainable productivity to customers.

Atlas Copco's new building is in one of Rock Hill's newest mixed-use developments, Riverwalk Business Park, and replaces the company's original facility in Rock Hill.

[www.atlascopco.us](http://www.atlascopco.us)

**Cudney Named LISSMAC's Sales Director, Construction Technology**

LISSMAC Corporation is pleased to announce Dan Cudney's recent promotion to Sales Director for the company's new Construction Technology division. Cudney has spent the last four years as Sales Manager for LISSMAC's Metal Processing products. A native of the Toronto area, he attended George Brown College for Business and Marketing. In good Canadian tradition, Cudney has always enjoyed playing and coaching ice hockey. In 2003, Cudney moved to California, where he spent more than 14 years in construction and industrial machinery sales. Prior to joining LISSMAC, he worked for a leading worldwide construction equipment manufacturer, focusing on the Californian market. Now, Cudney brings his extensive knowledge and experience of the construction and concrete industries to LISSMAC's Construction Technology division, helping the company establish its wide product spectrum throughout the Americas.

[www.lissmac-corporation.com](http://www.lissmac-corporation.com)



**LISSMAC Launches Construction Technology Division**

World of Concrete 2017 marked the debut of LISSMAC Corporation's new Construction Technology division. Customers throughout the Americas can now buy LISSMAC's German-made construction machinery directly from its U.S. subsidiary LISSMAC Corporation. With headquarters located near Albany, NY, and a regional facility in Southern California, LISSMAC provides sales, service, and support on all offered products. Featured products at WOC 2017 included multiple floor cutters of different sizes and styles, including electric, gas, and diesel models; various core drills, with and without core drill stands; and SFA Waste Water Filtration systems. One of the highlights was the new high horsepower UNICUT 600 (136 hp) floor cutter, with remote control capabilities. Waste water filtration has been an important topic throughout Europe as it relates to environmental concerns linked

to the disposal of mud and cutting sludge during concrete construction tasks. As environmental regulations have become more strict throughout the Americas, LISSMAC's SFA Waste Water Filtration systems will offer a welcomed solution.

LISSMAC also offers a full range of diamond consumables. Driven by the company's long standing experience in the field, combined with continuous product development and stringent quality measures, LISSMAC's diamond cutting and coring blades and bits optimally work with our construction machinery and ensure performance that lives up to the highest standards. LISSMAC construction technology is made for professional applications. With pioneering spirit and innovative strength, the company has developed technically sophisticated professional products for the construction industry for more than 30 years.

**AEM Elects New Director: Brad Boehler of Skyjack**

The Association of Equipment Manufacturers (AEM) has elected Brad Boehler, President of Skyjack Inc., to the AEM CE Sector Board to fill an unexpired term. Boehler joined Skyjack in 2003 and has progressively held strategic positions, including the previous titles of Vice President of Engineering and Vice President of Sales & Marketing. He holds the designation of Professional Engineer, and began his career as a Military Engineer with the Canadian Armed Forces. He is active in several AEM working committees and chairs the AEM Canada Working Group and is also active in leadership roles for the International Powered Access Federation (IPAF). AEM officers and directors work on behalf of all member companies, giving their time and talent to provide strategic direction and guidance for Association action in areas including public policy, market data and exhibitions, as well as technical, safety and regulatory issues, and education/training.

"At AEM, we benefit from the support of our member companies and the leadership talents of our Board members, who are selected to reflect an industry cross-section," says AEM President Dennis Slater. "Their dedication helps ensure Association programs continue to meet member and industry needs, and we welcome Brad's knowledge and participation."

[www.aem.com](http://www.aem.com)





Husqvarna

# WE HAVE A DUST SOLUTION FOR YOU



## WHETHER CUTTING WET OR DRY, WE'LL TAKE CARE OF THE DUST.

Taking care of dust and slurry in a smart and easy way means taking care of yourself, your equipment and your business. That's why Husqvarna now presents a new range of efficient equipment to keep concrete dust and slurry generated from cutting, drilling and grinding under control without compromising your productivity. Whether wet or dry jobs, we'll make your workday easier – from start to finish. **800-288-5040**

[WWW.HUSQVARNACP.COM/US/CONTACT-US/](http://WWW.HUSQVARNACP.COM/US/CONTACT-US/)

 [facebook.com/husqvarnaconstruction](https://facebook.com/husqvarnaconstruction)

 [youtube.com/husqvarnaCP](https://youtube.com/husqvarnaCP)

 [HusqvarnaCP\\_Americas](https://Instagram/HusqvarnaCP_Americas)

Copyright © 2017 Husqvarna AB (publ.). All rights reserved. Husqvarna is a registered trademark of Husqvarna AB (publ.).

## Event Calendar

### M&T Peças e Serviços Brasil

June 7-9, 2017  
São Paulo Exhibition Center,  
São Paulo, Brazil  
[www.mtexpo.com](http://www.mtexpo.com)

### Construction Expo

June 7-9, 2017  
São Paulo Exhibition Center,  
São Paulo, Brazil  
[www.constructionexpo.com.br](http://www.constructionexpo.com.br)

### Concrete Decor Show 2017

November 6-10, 2017  
Innisbrook Resort,  
Palm Harbour, Florida, USA  
[www.concretedecorshow.com](http://www.concretedecorshow.com)

### World of Concrete 2018

January 23-26, 2018  
Las Vegas Convention Center,  
Las Vegas, USA  
[www.worldofconcrete.com](http://www.worldofconcrete.com)

### Intermat 2018

**World of Concrete Europe 2018**  
April 23-28, 2018  
Park de Exposition de  
Paris-Nord Villepinte,  
Paris, France  
[www.intermat.fr](http://www.intermat.fr)

### DEMCON 2018

September 27-28, 2018  
Infracity, Stockholm, Sweden  
[www.demcon.se](http://www.demcon.se)

### The Rental Show 2018

February 19-21, 2018  
Ernest N. Morial Convention  
Center, New Orleans, USA  
[www.therentalshow.com](http://www.therentalshow.com)

### Demolition 2018

**US National Demolition  
Association Convention 2018**  
February 22-24, 2018  
Austin Convention Center,  
Austin, USA  
[demolitionassociation.com](http://demolitionassociation.com)

### CSDA Convention 2018

March 6-10, 2018  
Grand Wailea Resort,  
Maui, Hawaii, USA  
[www.csd.org](http://www.csd.org)

### IACDS Convention 2018

May 20-22, 2018  
Tokyo, Japan  
[www.iacds.org](http://www.iacds.org)

## Timothy Hansen Named General Manager at Intertractor America Corporation

Timothy Hansen has joined ITM Group as General Manager of Intertractor America Corporation, a leading designer and manufacturer of earthmoving crawler undercarriages and track frames. Prior to joining Intertractor America, Hansen was director of aftermarket sales for undercarriage manufacturer Berco of America, Inc. He has also had leadership roles in account development and sales management for key accounts in manufacturing for the heavy equipment industry. Hansen has an MBA degree, and is completing an MS in Strategic Planning and Leadership from Michigan State University, as well as a BS in Technical Management.

"I look forward to leading this highly professional team at ITM/Intertractor," says Hansen. "With their focus on providing customers with a high level of customer service and industry-leading undercarriage components, everyone will understand the commitment being made at ITM/Intertractor."

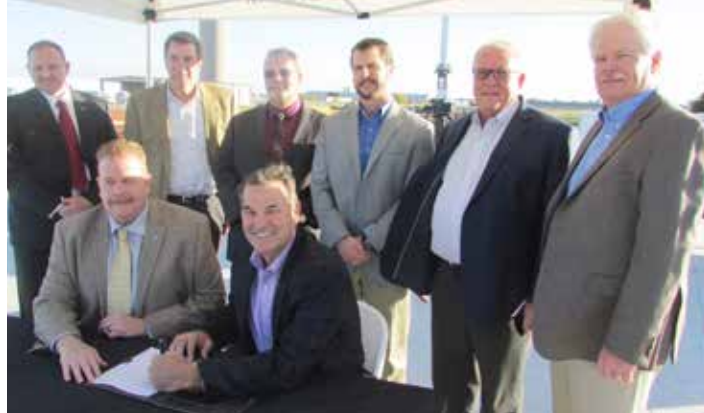
Intertractor America is responsible for the design, engineering, manufacturing and assembly of earthmoving crawler undercarriages and track frames from 1.5 to 500 tons. The company distributes complete undercarriage and components to the North American Original Equipment Manufacturers.

[www.group-itm.com](http://www.group-itm.com)



## ROMCO Equipment Co. Joins Atlas Copco Construction Equipment Dealer Network

Atlas Copco Construction Equipment welcomes ROMCO Equipment Co. to its growing dealer network. The Texas-based company will rent, sell and service Atlas Copco compressors, generators and light towers to meet customer demands for portable energy equipment across the state. ROMCO serves the heavy construction and mining industries in Texas. Expanding its line of equipment to include Atlas Copco compressors, generators and light towers, allows ROMCO to serve additional industries, including oil and gas refineries and shipyards.



## Texas-based ROMCO Equipment Co. will rent, sell and service Atlas Copco portable compressors, generators and light towers.

"We are a second-generation, family-owned company focused on providing our customers with superior products and services with an honest, straightforward approach," says Gable Sprague, ROMCO Power Systems' division manager. "We chose to add Atlas Copco portable energy equipment to our lineup because we believe their company values align with our core values."

ROMCO Equipment Co. sells replacement parts and attachments as well as provides maintenance and full refurbishment for worn equipment.

"We decided to join the Atlas Copco dealer network after a long-term customer expressed the need for Atlas Copco products on one of their jobs," says Sprague. "We were impressed with how robust and well-made the equipment was, and we wanted to share its capabilities with our other customers."

ROMCO's Texas branch locations include Austin, Buffalo, Carmine, Dallas, Fort Worth, Houston, Longview, Rio Grande Valley, and San Antonio.

[www.atlascopco.us](http://www.atlascopco.us)

## HTC DURATIQ wins Most Innovative Product Award at World of Concrete 2017

The latest machine series DURATIQ™ won the World of Concrete's "Most Innovative Product" in the "Industry Choice" category, which is based on the votes from the industry users. This award validates that the DURATIQ™ series of machines from HTC meet the real-life expectations in the industry.

The MIP award program is arranged and presented by Hanley Wood in conjunction with the World of Concrete in Las Vegas each year and showcases products exhibited at the show that are the most innovative products in the industry for a

given year. DURATIQ™ was nominated in one of the nine categories. DURATIQ™ and its innovative solutions were demonstrated in HTC's inside- and outside booth.

"We at HTC are overwhelmed about the fantastic response the launches of the new machines have resulted in," says Cathérine König, Head of Marketing at HTC. She adds that in the fall 2016 DURATIQ™ was awarded another Innovation prize at the DEMCON show in Stockholm. "This new MIP award is again proof that we have created something that has met the market demand with a very high innovation level."

"These innovative products will increase safety and productivity across all facets of the concrete and masonry industries," adds Bill Palmer, Editorial Director of Hanley Wood's Commercial Construction Group.

[www.htc-floorsystems.com](http://www.htc-floorsystems.com)

## Program Set For 8th Shingle Recycling Forum

The eighth Shingle Recycling Forum will be held Oct. 17-18, 2017, in Cincinnati, Ohio. Forum sessions include an overview of the industry, current recycled asphalt shingle (RAS) mix designs, how to work with a state DOT to use RAS in the highway environment, and alternative markets for RAS. The event will feature a tour of a local shingle recycling facility and another site. The forum exhibit will showcase vendors providing the latest services for the shingle recycling industry.

The Shingle Recycling Forum is organized by the Construction & Demolition Recycling Association, and co-sponsored by the Federal Highway Administration and the National Asphalt Pavement Association, among others.

[www.shinglerecycling.org](http://www.shinglerecycling.org)







**GO AHEAD,  
STAND  
BEHIND IT.**



**We do.**

National Flooring Equipment sets the industry standard for mobility, adaptability, and durability. We have online training tools and on-demand customer service, so you know we have your back.

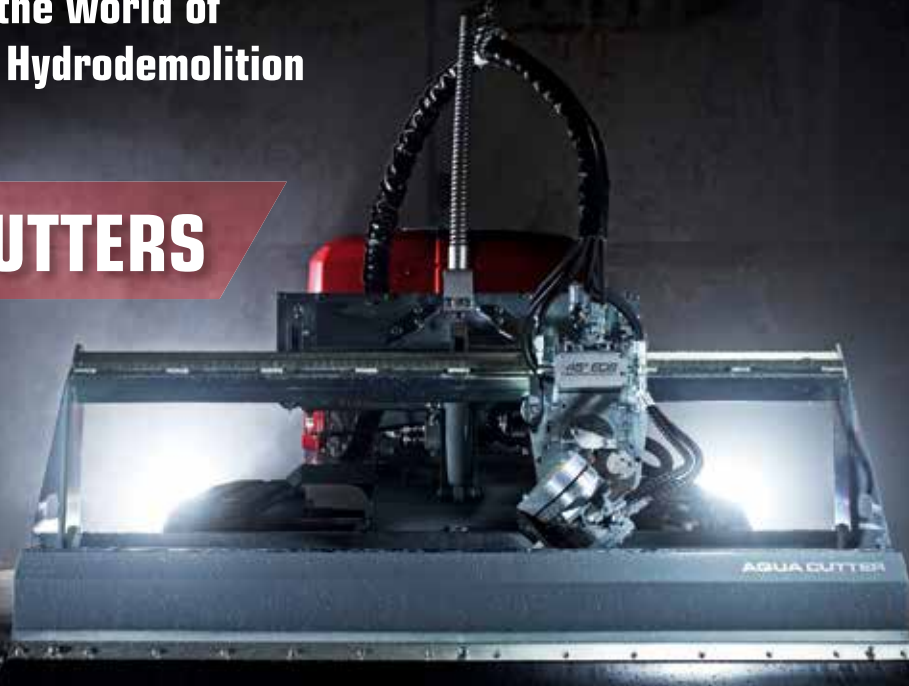
9250 Xylon Avenue North | Minneapolis, MN 55445 | [nationalequipment.com](http://nationalequipment.com)  
Main: 763.315.5300 | Toll Free: 800.245.0267 | Fax: 800.648.7124

**NATIONAL  
FLOORING  
EQUIPMENT**

Made in America Since 1968

Welcome to the world of  
Cutting Edge Hydrodemolition

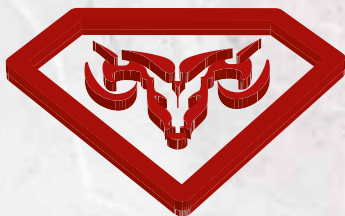
## AQUA CUTTERS



Distributed by:

Brokk Inc. | Monroe WA | 1-360-794-1277 | info@brokkinc.com | www.brokk.com

[www.aquajet.se](http://www.aquajet.se)



# HYDRARAM®

DEMOLITION & RECYLING EQUIPMENT

Hydraram develops and produces over more than 20 years attachments for use in demolition- & recycling industries. We supply a complete line of hydraulic attachments for each excavator from 1 to 200 tons.



- New attachments
- Used attachments
- Rental
- Service & maintenance
- Repairs
- Spareparts

WORLDWIDE DEALER NETWORK

HYDRARAM b.v.  
Meander 7  
9231 DB Surhuisterveen  
The Netherlands

Tel. +31 512-365981  
Fax +31 512-365761  
[www.hydraram.com](http://www.hydraram.com)  
info@hydraram.com



DA-Goldmember 2016



# BREAK IT UP!

Concrete. Rock. Pavement. Masonry. There's some pretty tough stuff out there to deal with. And more often than not, it won't go quietly, or easily. That's why it helps for contractors to have some extra muscle in their equipment arsenal—an efficient, reliable tool that will show that formidable inorganic foe who's boss, no matter what extra strength its builders (or Nature) gave it.

That's why everybody in this business loves breakers. Just as even the most self-assured professional fighters have respect for their opponents, smart contractors recognize that there will always be a new challenge that tests the mettle (and maybe metal too) of their machinery. Sure, they can get the job done. But with a better breaker, they get it done faster, more efficiently, and at a better price for both owner and customer. Take a look at what's new in breakers for 2017. Then, get ready to rumble... and rubble!

## Rammer's Biggest Just Got Better

Conexpo served as the international launch pad for the latest incarnation of Rammer's largest breaker, the 9033. Replacing the highly successful Rammer 7013, the 9033 offers a number of key changes and improvements, many of which have been proven in smaller Rammer hammers.

Weighing in at 15,432 lb (7,000 kg), the new Rammer 9033 is suitable for carriers in the 60t to 120t operating weight range. Impact rate on the long stroke



setting rises from a maximum of 450 blows per minute to 520, while maximum oil flow rises to 121.5 gal/min (460 l/min). Input power is up from 152hp to 185 hp (113kW to 138kW), an increase of 22% compared with the 7013.

Stroke length and Idle Blow Protection can be easily adjusted to allow the Rammer 9033 to be purpose-matched to individual applications. The long stroke setting uses a lower blow frequency for optimum breaking in hard materials, such as granite and reinforced concrete foundations. The short stroke setting delivers higher blow frequency which is ideal for softer materials, such as limestone. The Idle Blow Protector on/off selector allows the operator to easily adjust the working mode to protect against idle strokes. Like the other models in Rammer's Large Range of hydraulic hammers, the new

9033 is designed for a long, trouble-free life. The new model utilizes long-life, high-tension VIDAT tie rods for improved reliability and lower operating costs. The tool-retaining pins are locked by simple, reliable rubber rings, while the surface of the lower tool bushing has been specifically designed to provide longer tool life. The Rammer 9033 also becomes the latest (and final) model in the Rammer Large Range to benefit from the addition of the Ramvalve overflow protection system. The Ramvalve monitors the oil flow through the hammer. If the oil flow exceeds the pre-defined setting, the valve adjusts the flow to a very low level and drops the hammer's impact rate. The Ramvalve resets after the hammer re-starts with a correct oil flow. This highly effective system provides excellent protection against accidental overflowing and



and suitable for carriers from 0.8t to 55t. The larger models in the GS-series (1200-4000) feature an accumulator to generate additional impact energy. The accumulator also reduces peak pressures from the hydraulic circuit, reducing recoil to the carrier and protecting the breaker. When desired, the breakers are available with an open housing, the GO series (gas open). The IBEX HS-series (hydraulic silenced) is comprised of four models, these completely hydraulic breakers feature the PAA-system (Power Absorbing Accumulator) and the OTC-system (oil traffic control). These specially designed technologies ensure a continuous and stable oil flow and operating pressure, where optimal impact energy will be produced. Both systems act as a hydraulic shock absorber, where the constant impact energy further reduces any recoil to the carrier. All HS-models feature as standard ABF-technology, an automatic control system that comes activates when blank strokes are detected during operation. This prevents enormous amounts of stress from being applied to the vital components, increasing the breaker's lifespan. The longer maintenance intervals characterize these as extremely reliable breakers.

### Atlas Copco's EC 165 T Hydraulic Breaker for Larger Carriers

The latest addition to Atlas Copco's popular range of heavy EC rig-mounted hydraulic breakers is EC 165 T, suitable for carriers in the 35t to 55t weight class. With a service weight of 6,614 lb (3,000 kg),

overpressure, enhances hammer's reliability, and offers improved protection against oil spills.

The Rammer 9033 has three greasing options—a centralized manual option; carrier-mounted Ramlube I automatic greasing; or Ramlube II, which utilizes a cartridge mounted on the hammer to automatically deliver optimum levels of lubrication for greater wear protection and a longer service life. The new model also comes equipped with Rammer's Ramdata II service indicator, allowing operators and service personnel to monitor and log vital service and maintenance information to further minimize downtime.

### Dehaco IBEX Hydraulic Breakers—Strong Dutch Quality

When controlled force is necessary the IBEX hydraulic breakers from Dehaco are in a class of their own. Outstanding quality, extremely versatile, an amass of power and durability. Dehaco's years of experience has led to the development of hydraulic breakers that extremely reliable and simple to maintain. The high quality design guarantees excellence. All models are protected with a specially designed housing, making them suitable for the broadest variety of applications. Consequently, inspection points have been introduced in the housing, allowing regular checks to be made on the through bolts. The housing has a modern appearance, and is able to withstand the toughest conditions. An optional automatic lubrication system makes it even simpler to keep the breaker in perfect condition. In combination with a special set the breakers can also be operated underwater.

The IBEX GS series (gas-silenced) is comprised of 14 models, all equipped with a nitrogen accumulator



the new EC 165 T offers the same popular features as the other hydraulic breakers in Atlas Copco's EC range. Atlas Copco's EC breaker range features hybrid technology: an integrated nitrogen piston accumulator supports constantly high impact energy, safe start-up and smooth operation. The integrated stroke control valve optimizes efficiency, with a combined stroke length and start-up mode switching valve that allows the operator to adjust the breaker operation mode to the application.

EC 165 T comes with the well-known EnergyRecovery feature, which automatically utilizes the piston recoil energy to increase the performance, without additional hydraulic input, and to lower vibrations. The breaker can be equipped with ContiLube™ II, an optional, self-bleeding automatic lubrication device for optimized grease consumption and continuous lubrication.

### Also From Atlas Copco, New MB 1650 Hydraulic Breaker

Atlas Copco's MB 1650 is lighter and more compact than its predecessor model, the MB 1700, yet gives the same high performance. The new design offers higher reliability, lower repair costs and easier accessibility for maintenance. Weighing in at 3,638 lb (1,650kg), the new MB 1650 hydraulic breaker is suitable for carriers in the 19t-32t weight class. A redesigned service window offers greater accessibility and thus makes the attachment more maintenance friendly. With no high-pressure accumulator the MB 1650 costs less to maintain and repair. Noise and vibration levels on the MB 1650 are minimized by the VibroSilenced Plus system, which utilizes non-metallic suspension arrangements to isolate the percussion mechanism from the breaker box. An optional, patented dust sealing system called DustProtector II will extend the service life of the components and reduce grease consumption. The built-in check valve reduces dust intake into the tool guiding area and the percussion chamber.



### Meet Atlas Copco's Cobra™ PROi, a Petrol Breaker With EFI

Atlas Copco is the first to introduce a petrol breaker with electronic fuel injection (EFI), a technology that offers significant benefits for users. The Cobra PROi provides up to 10% more power at all working speeds, while optimal combustion gives up to 10% savings on fuel consumption. The machine is easy to start in almost any climate, or at any altitude, and the breaker requires less routine maintenance. An integrated mechanical fuel pump employs a unique system that keeps constant pressure to the regulator without the help of electricity. While standard EFI systems require 43.5 psi (3 bar) pressure in the fuel system, the Cobra PROi's low pressure EFI system custom-made injectors require just 2.9 psi (0.2 bar). This approach minimizes pressure variations and voids in the fuel, ensuring smooth running. Putting the operator first is embedded in Atlas Copco's DNA, and the Cobra PROi is a good example. Hand-arm vibration level on three axes is below 4 m/s<sup>2</sup>, and the machine is light. Weighing just 53 lb (24 kg), the PROi is easy to carry around and fits easily in the trunk of a car. Starting is easy in any conditions; the ECU (Engine Control Unit) wakes up during the first



MADE IN GERMANY

# PREMIUM DIAMOND TOOLS & MACHINES



**KERN-DEUDIAM**  
Diamantwerkzeuge und Maschinen GmbH

Tel. +49 5257 507-0 Industriestraße 24  
Fax +49 5257 507-40 33161 Hövelhof  
info@kern-deudiam.de | kern-deudiam.de

# YOUR COMPLETE SOURCE FOR BREAKING ROCK.

VISIT US AT  
  
Booth - S62147



PAVING BREAKERS



DEMOLITION TOOLS



ROCK DRILLING

Whether you need to break a sidewalk or the side of a mountain, we've got a durable, dependable solution for you. If you need tools for construction, mining, or demolition—we're the only name you need to know.

Call (800) 872-6899 or visit [BrunnerLay.com](http://BrunnerLay.com)

**Brunner & Lay**

"Quality First" since 1882

revolutions when the user pulls the starter cord.

**Promove's Long-Lasting Breaking Power**

At Conexpo, Italian manufacturer Promove showcased its latest innovations and features on the "Xtreme Performance" hammer line, and introduced the demolition attachment line dedicated for the North American Market.

The company's light range breaker features an innovative the patent-pending Smartvalve plug-and-play system, which eliminates the time-consuming process of installation. Ideal for rental activities and combined with the hour meter, Smartvalve also protects the hammer from overflow and pressure peak, which also extends the carrier matching range. Promove's medium and heavy range are famous for always delivering excellent breaking performance combining productivity and reliability at top of the industry level, thanks to the superior power-to-weight impact energy, with a larger piston and tool diameter for one of the hardest hits. Stand equipment includes the silenced and reduced vibration case, the anti-blank firing system with no residual blows at all, and guaranteed low maintenance. Promove is growing fast with help of its new North American partner, PowerTrac Machinery, and its North American warehouse that offers 24-hour spare parts availability. Promove is also expanding its dealer network to better serve all areas with its globally recognized after-sales customer support.

**A Time of Major Developments for Indeco**

For some time now, Indeco has been planning the launch of a series of developments across most of its product range, with an eye toward providing users with yet another boost to productivity and reliability. Indeco has done this by further improving the positive qualities of its range with some crucial enhancements, and by launching new products to meet the needs of end-users. Indeco has upgraded the hydraulic system on its hammers, so that the HP series has now also become Fuel Saving (FS). All of the hammers in the Indeco HP range will be displaying the FS badge, starting from the five new models: HP 4500, HP 6000, HP 10000, HP 12000 and HP 14000. Compared with other manufacturers' models of equivalent weight and performance, Indeco hammers require less oil per minute and lower operating pressure. Lower hydraulic power likewise reduces the rpm on the carrier, leading to fuel savings of up to 20%, while ensuring optimum performance and maximum productivity. This advantage is even more clear-cut when comparing the Indeco hammer



with competitors' gas- or gas/oil-powered breakers of similar sizes. That's quite a plus, both for the environment and for users' margins, which grow in proportion to the size of hammer you're using.

**Chicago Pneumatic Rolls Out New Hydraulic Breakers**

Chicago Pneumatic has launched the RX12, a powerful new rig-mounted hydraulic breaker for carriers in the 9t to 15t weight class. Compared with its predecessor model, the RX12 offers a 10% increase in output power, and a 28% increase in impact energy. With a service weight of 1,378 lb (625kg), and a tool diameter of 3.5 in (90mm), the RX12 delivers a combination of high reliability and efficient performance; making it ideal for a range of light demolition, landscaping, building renovation and road construction applications. The RX12 features an innovative mono-block design, with the cylinder and tool holder integrated in one piece. This reduces the total number of parts, and eliminates the need for side bolts, to increase overall reliability. The inclusion of a replaceable cylinder sleeve also cuts repair time and costs. The RX12's double tool retainer bars ensure optimal working tool guidance, with a one-piece floating wear bush enabling quick and easy field replacement of the working tool. A central lubrication point is available for manual greasing, and an automatic lubrication device called CP-Lube is available. To lower stress levels for man and machine, the RX12 has a breaker box guidance system that dampens noise and vibration levels. As with all hydraulic breakers in the RX range, the RX12 features gas/oil hybrid technology, an internal control valve, and a Power Booster mode that reuses wasted recoil energy for increased efficiency and performance.

**Toku's Large Breakers for Large Results**

Toku's TNB breakers deliver exceptional impact energy, long life, and low operating costs, while also minimizing operator fatigue and negative environmental effects. These unique benefits are due to an innovative blend of simple yet efficient design and advanced "accumulator free" technology. With a complete range of 15 models based on the same design philosophy, TNB breakers are ideal for applications from construction and demolition to rental, recycling, mining, and quarrying. Because Toku breakers are not sensitive to system back pressure, they can be powered by the wide variety of carriers in the field. With Toku's innovative side plate and bracket system, one breaker can be moved from one machine to another with a simple pin and bushing change so you get more return on your investment. For example, one hammer will fit a skid steer loader and is then easily moved to a compact excavator. Using a low pressure nitrogen charge, the Toku breaker cushions every blow. This reduces wear and tear on the carrier and adds to operator comfort. Featuring only two moving parts and few seals. Toku breakers offer more "up-time" along with simple in the field maintenance. When a repair is required the Toku breaker will be back on the job quickly and at a reasonable cost.

Technical specifications Toku				
Model	TNB-190	TNB-230	TNB-310	TNB-400
Base carrier (t)	20-30	27-40	38-50	45-70
Imp. ener. (lbft/Nm)	5,550/7,457	7,500-10,169	10,000-13,558	12,000-16,270
Impact freq. (bpm)	370-490	380-450	370-470	370-470
Work. weight (lb/kg)	4,960-2,250	5,952-2,700	7,937-3,600	10,031 4,500
Chisel dia. (in/mm)	5.5/140	5.75/146	6.3/160	70/178



*Your Attachment Supplier*



## What makes Rotar unique

At Rotar we believe that people and machines can operate more efficiently. From this philosophy, we develop state-of-the-art demolition- and recycling attachments for hydraulic excavators and wheelloaders. Rotar is a manufacturer, which means that we are responsible for the development and production of our products ourselves. That is the only way to guarantee the well-known efficiency, quality and productivity of Rotar attachments.

Our employees treat your Rotar attachments as if it were their own. Our craftsmen always aim to develop the best products. That is why we are in constant communication with our customers and dealers, and we often develop products based on their experiences, suggestions and ideas. Once your attachment leaves the Rotar Factory, it bears our name. A name that represents a product with unique performance, produced by a unique team. Uniquely for you.

Discover our products  
at [www.rotar.com](http://www.rotar.com)



# GET THE **RED** CRUSH!

## Best Practices for Maintaining Petrol-Powered Motor Drills and Hydraulic Breakers in Action

Petrol-powered motor drills and breakers are designed for use on jobs located in remote areas where there is a need for operators to move around frequently. Therefore, the last thing a contractor wants is to get out to a work site in the middle of nowhere and find that the drill they've brought with them doesn't work because it hasn't been properly maintained. Downtime is costly, so following a regular maintenance regime will ensure improved uptime and not only ensure you get the best out of your drill, but also prolong its lifespan for years to come. Here, Gus Armbruster, Spokesperson for Handheld Tools at Chicago Pneumatic, provides some top tips for keeping the latest types of handheld breaker and drill in optimum working condition.

### Daily/Weekly Checks

First, for daily checks it is crucial to ensure that the air filter is not clogged as dust and particles can build up quickly. The operator should avoid rinsing out the filter and instead simply tap it to clean it instead. Secondly, check that you have the correct tool shank; as you don't want something that is too long and jams into the machine being used. The only weekly maintenance tip is to check the lower reservoir that oils the tool shank. The lower oil reservoir ensures that the tool shank receives adequate lubrication, so that metal moving parts don't rub together. It's recommended to check this each week to ensure there is enough oil in the reservoir.

### Monthly Checks

Each month, the gearbox oil level should be checked. The drill should be upright before the oil is added. Every three months it is essential to check that the nuts, bolts, screws, and hose fittings are secure on your drill or breaker.

### Fluids

One of the most important maintenance tips is to ensure that the correct type of fuel is used. With Chicago Pneumatic's Red Hawk range, a high octane, low ethanol fuel should be used.

### Storage

Never store the machine upside down. We recommend storing the machine in a standing position, after removing the working tool. If stored in a lying position, the machine must be placed on the back cover.

### Box-out: Red Hawk range

The Red Hawk Road is the most powerful breaker in the Chicago Pneumatic Red Hawk range, offering high impact energy and weighing only 22 kg. Ideal for concrete and asphalt breaking and cutting, enough impact energy is delivered to handle silica-rich rocks and reinforced concrete. An additional tamping shank allows users to repair potholes and surface damage, making the Red Hawk Road ideal for infrastructure applications.



# Hydraulic Breakers in action

## Two Indeco HP 5000 ABFs for Mexico's Longest Tunnel

One of Mexico's most popular holiday destinations, Acapulco has been suffering from serious traffic congestion, especially on the road from the city centre to Juan Álvarez international airport. As well as plaguing residents and playing havoc with tourist figures, the traffic jams are to be found in particular along the stretch between Acapulco Bay and the Diamante and Puerto Marques suburbs, which currently means climbing La Escénica, the panoramic mountain overlooking the city. For this reason, in 2013 the city authorities took the decision to bypass the traffic jams by digging a 2-mile (3.2km) tunnel under the Cumbres de Llano Largo mountain.

The contract for excavating the two tunnels was awarded to the Aca-Túnel consortium made up of two private companies, ICA and CARSO. ICA has been the largest construction company in Mexico for decades, and over the years it has been awarded contracts for such key public works as roads, dams, bridges, public buildings, and airports. Grupo Carso is a conglomerate of companies owned by Mexican magnate of Lebanese origin, Carlos Slim, the richest man in Mexico and one of the richest anywhere in the world. The Carso Group includes a construction company that has built a series of other public works. Maquinter, Indeco's distributor in Mexico, sells and rents out construction machinery equipment in various different states in the Mexican Republic. Aca-Túnel sent them a provisioning request for Indeco hydraulic hammers.

The two HP 5000 ABFs, mounted on Caterpillar 320 excavators, were chosen for their excellent performance even when used horizontally during tunnel excavations and finishing. Once again, Indeco products are living up to their reputation, repaying the trust which experts from various construction sectors around the world have placed in them.



## An Indeco HP 25000 Takes on the Ballast Challenge

In a quarry near Canosa di Puglia in the southern Italian region of Apulia that produces railway track ballast, an Indeco HP 25000 (in Europe, HP 18000) hydraulic breaker again proves to be the best alternative to drilling and blasting when explosives are not an option. The Pozzelle quarry is located a short distance from Canosa di Puglia, and is characterized by the occurrence of Ambrato and Serpeggiante marble typical of the area. Active since the late 1980s and managed by the company CO.MA Srl, the quarry has good potential for the production of crushed stone used for track ballast. A set of surveys and laboratory analyses indicated that the deposit also contained metamorphic carbonate rock with dolomitic characteristics dating back to the formation of the Apula platform during the Cretaceous period. The rock is considered ideal for the production of ballast thanks to its good compression strength, resistance to abrasion and frost, and absence of harmful fibers such as asbestos. The quarry's proximity to a key provincial road, plus the need to protect the surrounding agricultural activity from dust, precluded drilling and blasting. That prompted CO.MA Srl to consult a

company with the experience and machinery to perform the full quarrying cycle, the primary and secondary crushing, as well as its stockpiling.

Production was contracted out to D'Oria Giuseppe e C. Srl from Andria, which has experience operating in the roadworks and concrete sector. To best handle the difficult task of quarrying a material of such hardness and unconfined compressive strength with very little fracturing, D'Oria purchased an Indeco HP 25000 FS and a Hitachi 870 90t excavator, which it paired up with another Hitachi Zaxis 350 33t excavator mounted with an HP 14000 (in Europe, HP 9000) the company already owned.

The second breaker is used to reduce the blocks designated for ornamental stone, which whether due to imperfections or cracks must instead be utilized as a material for ballast production. The second breaker is put to work especially to reduce the volume of material designated for ballast produced by the HP 25000, at times in dimensions too large to enter the crusher for primary crushing. Designed to respond to special quarrying requirements where large-scale production is demanded, the Indeco HP 25000 is having success in markets where drilling and blasting has seen a gradual decrease. Today Indeco is the only producer to offer a breaker with 25,000 lbf (3,390Nm), a machine that nevertheless maintains the versatility and rapidity of a smaller class of breakers. Despite the large size and high performance, the HP 25000 also has the advantage of being coupled with 90t excavators, a feature that translates into higher mobility in the quarry and especially lower fuel consumption, and that means higher profitability. With a striking rate that can get up to 460 blows/min and a 9.8 in (250mm) chisel, the HP 25000 can assure impressive productivity if we consider the quantity of rock that is broken up and demolished. The HP 25000, as with the rest of Indeco breakers, also boasts a ratio between input and output power highly favorable for achieving optimum efficiency. The breaker also comes with the ABF (anti-blank firing) system, a patented technology that only Indeco offers, which considerably improves efficiency and extends the life of the breakers.



## Okada Releases Its Largest-Ever Breaker

Okada of Japan has launched its new model 10000 hydraulic breakers, suitable for excavators in the 60t to 100t weight class. The largest breaker in the Okada series, the 7t 10000 gives outstanding power and exceptional quality to world class contractors. An 8-in (205mm) chisel makes the okada10000 ideal for various job site applications. OKADA's state of the art technology produces the highest-quality and incredible performance. The moving part is integrated in the cylinder, eliminating costly downtime and providing easy access for scheduled maintenance. The blow-per-minute rate can be set through the speed adjuster depending on the condition of material to be broken, while the standard-equipped auto-lubrication system ensures long, reliable operation.





# LISSMAC

CONSTRUCTION TECHNOLOGY



## PROFESSIONAL DRILLING

LISSMAC Corporation  
356 Hudson River Road, Waterford, NY  
Phone +1 518 326 9094 , sales@lissmac-corporation.com  
[www.lissmac-usa.com](http://www.lissmac-usa.com)



# BIGGER AND

## Conexpo 2017 Delivers on L

### Floating around the Internet in early March was an image of a sign that read, "All Visitors to CONEXPO Must Be Accompanied By A Grown-Up."

Whether the sign was real or someone's bit of computer cleverness, the sentiment was rather accurate. After all, there's nothing like acres upon acres of shiny new construction equipment to bring out the child in even the most seasoned contractor. And judging by the turnout of both manufacturers and visitors to the 2017 edition of Conexpo-Con/Agg, the Las Vegas Convention Center was, for about a week, the world's largest day-care center.

According to the Association of Equipment Manufacturers, Conexpo's organizer, the show attracted approximately 128,000 attendees, including an 8% increase in buyers from the US and overseas. More than 2,800 exhibitors—a Conexpo record—of all sizes and specialties crowded all three exhibit halls and the expansive (and seemingly endless) outdoor lots. And anyone who managed to traverse the entire 2.8 million net ft<sup>2</sup> (260,129m<sup>2</sup>) of exhibits—also a show record—deserves a medal...and, probably, a new pair of shoes. Conexpo was also marked by an overall upbeat sense regarding the course of the construction economy in the U.S. and elsewhere.

"I think there is a noticeable difference in the attendees at this show, and the difference is their optimism," said Michael Haberman, president of Gradall Industries and AEM's 2017 Chair. "Optimism was on display throughout the show, and the traffic was excellent."

#### It's showtime!

As has been noted before, Conexpo's size is a reflection of the show's emphasis on heavy equipment for all phases of construction. But that same expansiveness also ensures there's something for everyone. Witness, for example, Volvo Construction Equipment's debut of the 505 L350H loader, the company's largest-ever wheel loader with its 9.5 yd<sup>3</sup> (7.3m<sup>3</sup>) bucket, sharing the spotlight with a smaller North American newcomer—the 60hp EW60E compact loader.

And hardly a trade show goes by, it seems, that remote control demolition specialist Brokk doesn't introduce a new product, and Conexpo was no exception. The company debuted its new model 500, a beefed-up version of its



# WORLD BETTER

## softer Pre-Show Expectations





existing five-ton model 400 to accommodate the muscle of the Atlas Copco SB 702 hydraulic breaker. Peter Bigwood, vice president of Brokk's North American subsidiary, Brokk, Inc., explained that by reinforcing the arm and undercarriage, the 500/702 combo can deliver 1,086 lbf (1,472Nm) of breaking force—40 percent more than the Brokk 400—with the added flexibility of easier, safer access to difficult and constrained work areas.

“Essentially, you have a breaker rated for a 16-ton excavator working optimally on a five-ton robot,” Bigwood added.

Speaking of Atlas Copco, that company also got in on Conexpo's BIG theme, dedicating a place of honor in its booth for its 11t HB 10000 hydraulic breaker, which celebrated its 10th anniversary. Atlas Copco also displayed several other new, albeit smaller breakers, descriptions of which can be found elsewhere in this issue of PDA. Not everything at Conexpo was supersized, though. ASV, a Michigan-based joint venture of joint venture Manitex International and Terex, rolled out five compact track loaders, including the Posi-Track RT-30, a heavy-duty commercial machine in a 32.7-hp (24kW) radial lift package.

The North American subsidiary of Finland's Avant Tecno Corporation showcased its five-model line of light-weight, center-articulated compact loaders. Jukka Lyly-Yrjanainen, who has spearheaded Avant Tecno's five-year old venture into the North American construction markets says the products' small size and distinctive green color scheme have proven to ideal attention getters.

“They think at first it's just a one-tool machine, then realize they can handle more than 200 attachments,” Lyly-Yrjanainen says, adding that while Avant Tecno is gradually raising its profile, the company expects to continue a strategy of serving niche markets. “It's a big industry, to be sure, and there are needs we feel our loaders are

ideally suited to fill.”

(PDA will take a closer look at Avant Tecno's products and its North American strategy in a future issue.)

Another Finnish company made some attachment news at Conexpo, as attachment manufacturer ALLU announced a rebranding of its material handling technology. Appropriately named “Transformer,” ALLU attachments “identify that our equipment not only provides solutions that produce higher levels of profitability, but leads to changes that totally transform the way businesses are able to operate,” said ALLU President Ola Ulmala.

For those in the demolition business, the ALLU Transformer means only a single attachment is needed to process, mix, separate, feed, and load excavated soil, rubble, milled asphalt, and other materials. The Transformer can mix in binders if the material handling includes additive requirements or stabilization.

Asian equipment manufacturers were also well-represented at Conexpo. Among them was LiuGong, which offered the first showing of its new Vertical Lift Wheel Loader outside of China. The innovative product features vertical lift loader arms on an articulating frame, and a mechanical self-leveling Z-bar bucket linkage. Together, they provide a heavier tipping load and a higher lift height and reach than conventional wheel loaders of the same power and weight. Fuel costs are greatly reduced, adds LiuGong, as the reduced operating weight of the vertical lift machine allows more material to be moved per horsepower than with a conventional radial lift machine. This allows customers to move more tons per hour for lower initial investment, and lower owning and operating costs than would be required with conventional radial arm technology.

### Fast-forwarding the future

While many Conexpo attendees might have been focused

on how they'll manage the upcoming construction season, Conexpo also offered an interesting look at how they'll be doing work in five or ten years—if not sooner.

The centerpiece of Conexpo's 75,000-sq ft (6,967m<sup>2</sup>) New Tech Experience area was the world's first excavator built entirely of 3-D printed components, which were fabricated by a research consortium based at the Oak Ridge National Laboratories in Tennessee. The New Tech Experience also provided previews of some of the projects contractors will be working on, from the Hyperloop high-speed transport pods to highways constructed of more durable, and more sustainable materials. And as autonomous vehicle technology becomes a real possibility for everyday use in cities and highways, it's hardly surprising that manufacturers are looking for construction jobsite applications as well. Volvo provided a look at its prototype HX2 battery-powered autonomous load carrier, a product that the company says will reduced carbon emissions by 95%, and total cost of ownership by 25%. The HX2 is currently undergoing testing along with Volvo CE's LX1 prototype electric hybrid wheel loader. Volvo President Martin Weisburg admitted that it may be awhile before the HX2 is deemed ready for market, though the company is working on accelerating the process.

“It will be sooner than what we thought it would be a year ago,” he said.”

To be sure, Conexpo 2017 gave attendees a lot to think and dream about, perhaps to go along with those musings that usually occur during visits to Las Vegas' famed attractions. But it was hard not to leave Conexpo without some positive feelings about the current course of the North American construction industry. How long it will last and how deep it will go remain to be seen, of course. But for a week in March, a lot of people felt like kids again. And, so it would seem, rightly so.



# CSDA Elects 2017 Officers and Board of Directors

The US Concrete Sawing & Drilling Association (CSDA) is pleased to announce its new 2017 Officers and Board members, who were elected at the 45th Annual CSDA Convention & Tech Fair, held March 16-18, 2017.

Elected to serve a two-year term as President was Jack Sondergard, Central Concrete Cutting, Inc., Edgar, Wisc. Matthew Finnigan, National Concrete Cutting Inc., Milton, Wash., was elected as Vice President, while Dan Foley, Cobra Concrete Cutting Services Co., Arlington Heights, Ill., became Secretary/Treasurer. Kevin Baron, Western Saw, Inc., Oxnard, Calif., now serves as Past President, and Patrick O'Brien continues as Executive Director.

"I consider it a great honor to be elected as CSDA President and I truly look forward to working with a Board full of dynamic, forward-thinking industry leaders," says Sondergard. "We are in the midst of some tremendous shifts in terms of industry safety, so it is my hope that CSDA can continue to provide companies with valuable resources and training designed to help them succeed in what will be a challenging period for all."

The six new Board members are Dan Dennison, Diamond Tools Technology, Indianapolis, Ind.; Mark DeSchepper, Construction Solutions, Paola, Kan.; Jami Harmon, GSSI, Inc., Nashua, N.H.; Jessica Ledger-Kalen, Royale Concrete, Fairfield, Iowa; Mike Orzechowski, DITEQ Corporation, Lenexa, Kan.; and Doug Walker, Concrete Cutting Consultants, LLC, Long Beach Township, N.J. Their terms will expire in 2019.

Returning for the second year of their term are Peter Bigwood, Brokk, Inc., Mon-



roe, Wash.; Scott Brown, ICS Blount, Inc., Portland, Ore.; Matthew Dragon, GPRS, Inc., Toledo, Ohio; Bennett Jones, Advanced Concrete Sawing, Inc., St. Paul, Minn.; Kevin Schmitt, Husqvarna Construction Products, Olathe, Kan.; and Kellie Vazquez, Holes

Incorporated, Houston, Texas.

The remainder of the CSDA 2017 Board and committee meeting schedule is as follows:

- June 8-9 The Westin Fort Lauderdale, Fort Lauderdale, Florida

- September 7-8 The Westin Phoenix Downtown, Phoenix, Arizona
- November 30 - December 1 Sheraton Austin Hotel at the Capitol, Austin, Texas

[www.csda.org](http://www.csda.org)

## U.S. Construction Employment Up Due Solid Demand

Forty-three states added construction jobs between February 2016 and February 2017 while 39 states added construction jobs between January and February, according to an analysis by the Associated General Contractors of America of Labor Department data released today. Association officials noted that despite the relatively widespread increase in construction employment, most states are still significantly below peak construction employment levels. Florida added the most construction jobs (34,700 jobs, 7.5 percent) during the past year. Other states adding a high number of new construction jobs for the past 12 months include California (16,500 jobs, 2.2 percent); Texas (14,200

jobs, 2.0 percent); and Louisiana (13,500 jobs, 9.6 percent). Rhode Island added the highest percentage of new construction jobs during the past year (12.2 percent, 2,200 jobs), followed by Idaho (10.4 percent, 4,200 jobs); Oregon (10.0 percent, 8,900 jobs) and Louisiana. Five states reached new highs for construction employment: Louisiana, Massachusetts, New York, South Dakota, and Texas.

Seven states and the District of Columbia shed construction jobs during this period. Mississippi lost the highest number and percentage of construction jobs (-4,000 jobs, -8.7 percent). Other locations with steep percentage losses include D.C. (-6.9 percent, -1,100 jobs) and Alaska (-3.0 percent, -500

jobs). Virginia (-1,400 jobs, -0.7 percent) had the second-highest number of job losses over the year, followed by D.C. Illinois added the most construction jobs between January and February (7,300 jobs, 3.4 percent). Other states adding a high number of construction jobs include Ohio (6,300 jobs, 3.0 percent); California (5,100 jobs, 0.7 percent); Colorado (5,000 jobs, 3.2 percent) and Minnesota (4,500 jobs, 3.8 percent). Alaska added the highest percentage of construction jobs during the past month (7.9 percent, 1,200 jobs), followed by Delaware (4.7 percent, 1,000 jobs); South Dakota (4.2 percent, 1,000 jobs); Minnesota; and Vermont (3.8 percent, 600 jobs). Association officials said that many

firms continue to face shortages of available qualified workers as they try to keep pace with growing demand. They urged federal, state and local officials to act on measures outlined in the association's Workforce Development Plan to increase career and technical education opportunities, especially for high school students.

"More high school students should know that there are multiple paths to successful careers, and often those paths lead to construction," said Stephen E. Sandherr, AGC's chief executive officer. "If we want construction firms to continue expanding, we need to make sure there are enough qualified workers available to do the job."



# LEADING INNOVATORS OF HEPA DUST EXTRACTION SYSTEMS

**T8600P** is the only choice to control the dust for your large equipment.

## FEATURES:

- ▶ JET PULSE for Pre filter Cleaning without opening machine
- ▶ HEPA FILTERS Individually tested and certified 99.99@0.3 micron
- ▶ LONGOPAC BAGGING SYSTEM that controls dust when changing bags - no can to dump
- ▶ Low oil pressure sensor and High efficiency oil cooler
- ▶ Muffler rated at 10,000 hrs. with Catalytic converter for low emissions
- ▶ LEHR Carburetor for low fuel consumption and low emissions
- ▶ Housing cover to encase and protect the motor
- ▶ EPA (Environmental Protection Agency) certified motor
- ▶ CARB (California Air Resources Board) certified motor with O2 Sensor

## BENEFITS:

- ▶ SAFER, CLEANER MORE PRODUCTIVE JOB SITE. Only Ermator DUST EXTRACTORS have all the features with a three year warranty

Whether you are **SAW CUTTING, GRINDING, SHAVING** or **BLASTING** concrete, **Pullman Ermator's T8600P** will control the harmful dust. With the highest CFM and water lift in its class there is no better choice!

## T8600 Propane

- 18 HP Kawasaki
- 480 CFM
- 120 Waterlift
- Hose & Tool Kit

855.736.2869 | [www.ermatorusa.com](http://www.ermatorusa.com)

## ARDCO Articulating Multi-Purpose Truck



ARDCO announces the release of the next generation Articulating Multi-Purpose Truck (AMT), featuring a modular back-end platform that offers the flexibility to customize the vehicle to suit any work environment, from urban construction projects to extreme off-road jobsites. The powerful and rugged AMT is designed to accept a wide array of standard and customizable attachments. Available configurations include a bare chassis, flatbed, water tank, fuel tank, dump bed, service and lube station, utility bed, personnel carrier, pipe trailer, drill, and custom solutions. Users can easily change attachments, while rental companies can serve a variety of customer applications with a single machine.

Multiple tire choices – tractor, construction, terra, or sand – help further configure the machine to various work conditions in construction, oil and gas, railroad, utility, forestry and agriculture. The AMT can navigate difficult terrain and work in any environment. Powered by a 250-hp (186kW) Cummins QSB6.7 Tier 4 Final diesel engine, the AMT 600 model features selectable 4- or 6-wheel-drive and offers a maximum payload of 22.5t. The AMT 400 model has a 200-hp (149kW) Cummins Tier 4 engine, offers 2- or 4-wheel-drive, and provides a max payload of 14t for hauling fuel, water, dirt and more.

The AMT features a two-person, fully enclosed, all-weather ROPS cab that is sound rated to 68 dB. An upgraded 7-in (177mm) display is incorporated in the steering column, providing digital gauges with onboard diagnostics, digital manual

access, and an optional backup camera display. A streamlined front-end angle offers the driver panoramic visibility to enhance safety. Specifically built for off-road travel, the AMT includes a high-strength center pivot trunnion with approximately 20 degrees of oscillation, which allows all the tires to maintain ground contact and traction while travelling over rough terrain. Dual hydraulic cylinders provide 37 degrees of steering each way, allowing not only great maneuverability, but also added traction. The articulating motion allows the tires to slide left or right in wet/muddy terrain and gain traction instead of spinning in one place and digging a rut.

Both models include a Dana 6-speed powershift transmission with twist grip shifter. The AMT 600 features AxleTech rigid planetary axles with driver controlled differential lock, while the AMT 400 has Dana rigid planetary axles with automatic limited slip differentials, front and rear. Optional accessories include a hydraulically operated front push blade, front-mounted hydraulic winch, heavy-duty front bumper/brush guard, and auxiliary hydraulics.



## Atlas Copco Unveils Complete HiLight Range

Atlas Copco has expanded its range of HiLight towers to seven models, including four advanced LED solutions. The comprehensive HiLight range gives users a variety of choices when it comes to sourcing safe and efficient light towers for multiple applications and industries, including construction, outdoor events and industrial applications. The HiLight range includes the H5+, B5+, V5+, and E3+ LED light towers, plus the V4, H4, and E2 metal halide variants.

Atlas Copco's latest LED light towers feature a unique, fully directional optic lens that maximizes practical light coverage while minimizing dark spots. A single HiLight LED light tower, depending on the model, can illuminate large areas with an average brightness of 20 lux. They also can run up to 260 hours before needing to be refueled

The LED lamps are designed for portability and performance with heavy-duty floodlights that offer high ingress protection (IP) and impact protection (IK) ratings. The LED lamps also offer extreme durability without deterioration in lux level while providing instant light. Atlas Copco's HiLight H5+ is ideal for large construction sites where workers are constantly on the move. The HiLight B5+ is recommended for applications including music and sporting events, residential construction, road construction, temporary public lighting and oil and gas. Demonstrating Atlas Copco's latest LED technology, the lamps offer exceptional durability without any loss in lux levels. The vertical hydraulic mast provides maximum safety for workers by illuminating an area as large as 5,900 yd3 (4,933m3). The B5+

model features a compact box-unit design, which makes it ideal for mass transportation and easy installation. The B5+ can run up to 260 hours before needing to be refueled.

The HiLight V4 is the leading solution within the 4,000-watt metal-halide light tower segment and can illuminate an area of 4,700 yd2 (3,930m3). What's more, the HiLight V4 and V5+ models boast the most compact footprint within the manual mast segment, enabling users to load as many as 20 units per truck. The models also integrate a spillage-free frame and the renowned HardHat® polyethylene canopy. The canopy withstands corrosion, dents, and fading, providing ongoing protection of the engine and overall unit while keeping the resale value high. Unlike ABS canopies, the HardHat canopy will not crack on impact with debris or other materials. The HiLight V4's metal halide sibling, the HiLight H4, has a heavy-duty galvanized steel canopy, hydraulic mast, and can illuminate an area of 4,700 yd2 (3,930m3). Completing the expanded range, the new HiLight E2 and E3+ are electric models with exceptional plug-and-light capabilities. Users simply connect to any power source, including auxiliary power, an electrical generator or directly into the grid, which helps deliver superior levels of energy efficiency. The E2 covers about 2,300 yd2 (1,923m3); the E3+, which benefits from the latest LED technology, can illuminate a 3,500-yd2 (2,926-m3) area. The light towers can be used for a variety of applications, including events, urban construction, road construction and temporary public lighting.

[www.atlascopco.us](http://www.atlascopco.us)

## Blastrac's New Attachable Transport Dolly for Ride-On Scrapers

There is a new innovation for Ride-On Scrapers, the Blastrac attachable dolly. A simple two step installation is all it takes to have instant faster movement and mobility over rough terrain. It also makes loading and unloading easy. Learn more about the new dolly at Blastrac's YouTube channel: <https://youtu.be/yIzZz0URel>. Or call 800/256-3440.

[www.blastrac.com](http://www.blastrac.com)





# MEIJER

DIAMOND TOOLS

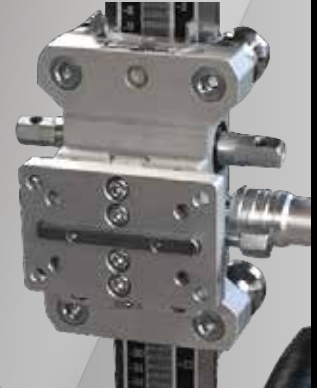
MANUFACTURER OF DIAMOND TOOLS AND MACHINES

## *a professionals choice*

*made in Holland*

Modular drill stands for the professional

### CNC PRECISION



**NEW TECH drilling**  
*EXTREME-FAST IN IRON*



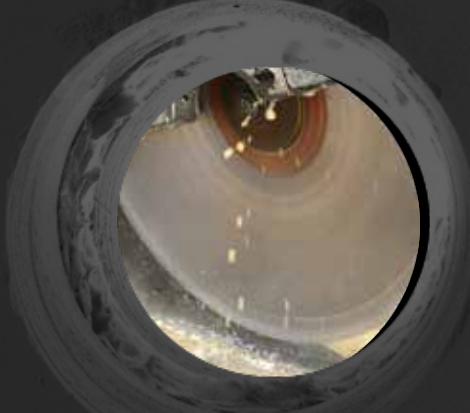
**SPECIALIZED IN**  
*HOLLOW CORE SLABS*  
*PRE STRESSED CONCRETE*



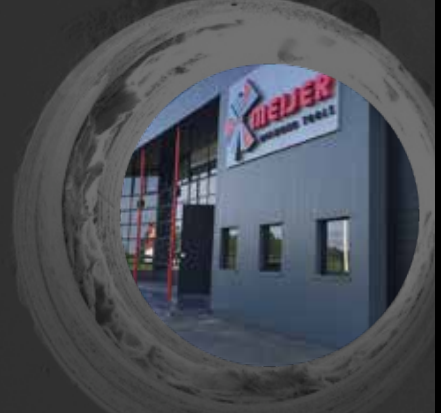
\* **DRILLING** \*



\* **SAWING** \*



\* **FACTORY** \*



Meijer Diamond Tools

[www.meijertools.nl](http://www.meijertools.nl)

tel: +31 313 659555

email: [info@meijertools.nl](mailto:info@meijertools.nl)

# Now Dust Suck!

## The clock is ticking for compliance with the new US silica dust regulations. How are manufacturers helping contractors comply with the new rules?

Construction and silica dust has become a big issue in the U.S. with the new OSHA regulations that became law last year. With contractor compliance mandated by September 23, 2017, the US construction industry is in a completely new situation in terms of silica dust. Long gone are the days when a concrete cutting or demolition contractors could by a cheap and low-quality vacuum for a job in a construction equipment store, use it during the project, and through it away when the job was done.

### New law decrease risks radically

Crystalline silica is naturally found in soil, sand, granite, and many other minerals used within the concrete industry. Millions of U.S. workers in high-risk jobs such as abrasive blasting, foundry work, stonecutting, rock drilling, quarry work, and tunneling are exposed to dangerous levels of silica that can lead to serious health hazards in the form of cancer and respiratory issues. OSHA's changes to current regulations will decrease these risks.

Workers' exposures are limited to a new permissible exposure limit (PEL) of 50 micrograms of respirable crystalline silica per cubic meter of air ( $\mu\text{g}/\text{m}^3$ ) averaged over an 8-hour day. Action must be taken for any situation where the PEL is above  $25 \mu\text{g}/\text{m}^3$ . Contractors must make provisions for measuring how much silica dust workers are exposed to, limiting workers' access to areas where silica exposures are high, using effective methods for reducing exposures, providing medical exams to workers with high silica exposures, and training for workers about silica hazards and limiting exposure.

### Some countries in Europe predecessors

Some manufacturers of dust extraction and air cleaning equipment in Europe began developing and producing equipment that has complied with the new U.S. law several years ago. This is because regulations in Sweden, Germany, and other countries have been quite sharp in the perspective of silica dust. Most of these manufacturers—especially Pullman Ermator and Dustcontrol—welcome the new regulations, as they have long been ready to offer their products to the U.S. market as their products lines already comply. They have invested several years' worth of testing and development, and know

that their products very well comply. On the other hand, manufacturers that need to adapt their products to the new regulation will experience a delay, as the switch to comply with the new regulations does not happen overnight.

Here's a look at what new products are already available.

### Pullman Ermator and Husqvarna

The really big news is that Husqvarna has acquired Pullman Ermator and that most of Pullman Ermator's professional assortments now can be bought under orange flag. The launch took place at World of Concrete this past January. The Pullman Ermator brand will though continue as usual, with models such as the recently released A4000 air purifier. With a capacity of 5,232 yd<sup>3</sup>/hour (4,000m<sup>3</sup>/hour) it can handle workspaces up to 2,691 ft<sup>2</sup> (250m<sup>2</sup>). The machine has a central exhaust at the back where the drain hose can be connected. It is equipped with disposable pre-filter and four H13 filters. The HEPA filter is the same as for A1000. The filter frame is fitted with hinges and buckles to make filter changes simple and fast. It is also easy to move when equipped with lockable non-marking wheels. It is equipped with a warning light when it is time to change the filter.

Last year, Pullman Ermator specifically pushed its new cleaning cabinet. The harmful dust at created during work as construction, remediation, demolition, or concrete cutting gets a lot of focus. What is also important to remember, but unfortunately is too often forgotten, is also to protect against damaging dust when cleaning tools and machines after finishing work. The Pullman Ermator range includes two sizes of cleaning cabinet, CC800 and CC1600. Cleaners are designed to allow the user to easily clean tools and machines without exposure to harmful dust. With a large door along one short side, it is easy to set up the tools in the cabinet. The cabinets have large windows, inside lights, and smooth gloves to simplify cleaning. It is easy to connect bottom suction as well as a detail to the cabinet. A car starter can also be added if necessary.

[www.pullman-ermator.se](http://www.pullman-ermator.se)

### Dust Control

Dustcontrol has a wide product range that not only encompasses the construction industry, but it spans a number of other industries such as the aerospace, automotive, manufacturing,



printing, composite, and food industries to name a few. On the construction side, the range is extensive and includes more than 20 basic models of pre-separators, dust handlers, air cleaners, and wet vacs. At the DEMCON show last autumn, a number of products were shown, including the latest series called Tromb. Today, the Tromb range consists of three models: DC Tromb 400a, DC Tromb 400c, and DC Tromb 400L. Tromb maximizes the power of the air to its advantage. The airflow is at most 523 ft<sup>2</sup>/hour (400 m<sup>3</sup>/hour), and has capacity for floor grinding machines 500 mm.

DC Tromb 400 can be used for all types of foundry dust such as plaster, asbestos, wood, concrete (quartz) and filler dust. Tromb is understood to have an H13 filter that meets the requirements for asbestos removal. The operator decides when the filter is to be cleaned—automatically during operation or after completion of work.

Dustcontrol has also created a mobile-adapted website that makes it easier and faster to quickly find information about the company's products and accessories.

[www.dustcontrol.com](http://www.dustcontrol.com)



# As Even More



## Ronda

Danish manufacturer Brøndum with their range Ronda has expanded it with the new Ronda 2800H heavy vacuum cleaners. The model was launched at Bauma last year. The new vacuum cleaner comes with a Longopac collection system, with a 1.4 ft<sup>3</sup> (40 liter) container for concrete dust, a 2.3 ft<sup>3</sup> (65 liter) container for light dust, and a combination of Longopac bags in a container. An optional flap valve assembly over the collection system provides virtually dust free draining, when necessary. It will be possible to configure the machine for emptying during operation. If large amounts of fine concrete dust from a floor grinder are collected, it will be possible for an operator to empty the vacuum cleaner while another operator continues to work with a floor grinder.



The Ronda 2800H has been designed to handle large amounts of fine dust, and is equipped with the multi-pipe filter system used in other Ronda machines. At the same time, the filter load will be reduced by the cyclone effect. The machine is also equipped with Ronda filter cleaning system. The machine has three "Green Tech" motors, which can be connected separately and available for 230V and 380V. It has been designed for the construction industry and has a metal frame and is equipped with large wheels, which makes the machine suitable for tough treatment and transport between and at workplaces.



## Blastrac

The new range of BLASTRAC dust collectors is equipped with a high-efficiency particulate air filter, ensuring a 99.995% exhaustion for particles greater than 0.187µm for total safety when used on hazardous substances such as asbestos or lead paint. Blastrac has developed a complete set of dust separators equipped with HEPA filters, designed for clean-up, remediation, asbestos, and lead staining. In addition, Blastrac also has a Longopac system available that throws all dust particles straight into a sack system. This does not guarantee any dust or hazardous particles in the environment.

The new line of BLASTRAC dust detector is completely HEPA certified. In order to be even more efficient and secure, Blastrac has also developed split versions, consisting of three devices, filters and security filter assembly and collection, both equipped with HEPA filters and suction devices.

The engine is out of the contaminated area. The safety filter unit is used to make the connection between the contaminated and safe areas the whist filter unit is inside the contaminated zone. The industrial dust collector can be installed on the ground floor of a building while a BGS-250 and a BHG-1800 work on the floors above.

### The range of Blastrac dust detector HEPA certified consists of:

- BDC-138HLP-UD 4 hp (3kW)
- BDC-138H SPLIT 4 hp (3kW)
- BDC-3160H 7.3 hp (5.5kW)
- BDC-3160H SPLIT 7.3 hp (5.5kW)
- BDC-15KW SPLIT 20 hp (15 kW)

Blastrac has also developed cyclone systems that complement the original dust separator. They have been designed for work with a lot of dust. They have better dust capture and increase the life of dust collecting filters.





The BLASTRAC cyclone separator is available in two different sizes. They allow capturing between 80% and 90% of the dust, which increases the life of the filter. On the largest cyclone separator, it is possible to connect multiple machines.

[www.blastrac.com](http://www.blastrac.com)

**Oxysan**

Oxysan is a relatively new and revolutionary method of so-called ionization technology to ensure that the dust particles cling to the ground and are easy to sweep or dust up. Oxysan is manufactured by Mpirum AB and sold only in Sweden, but there are plans for exporting them in the near future.

[www.midhage.se](http://www.midhage.se)



**Ruwac**

The US manufacturer Ruwac knows how important safety and cleaning up the job site is, especially for those working with fine, irritating concrete dust and powders as well as hazardous silica dust. All Ruwac vacuum cleaners recommended for concrete and silica dust removal now comply with the latest OSHA standards for worker safety while featuring industry-leading filtration innovative technology that can be custom tailored to suit specific needs. These industrial vacuums are ideal for concrete grinders, scarifiers, crack saws, and blast machines, just to name a few. Ruwac takes pride in its ability to provide the concrete industry with dustless vacuums systems that can be depended on to last while keeping workers safe.

Ruwac vacuums meet meet the 25 CFM per inch of blade per OSHA's requirement for handheld grinders. The industry-leading MicroClean filter is compliant with OSHA's silica dust standards at 99.9% efficient at 0.5 microns, preventing filter clogs and cutting down on costly filter replacements. A manual filter cleaning mechanism easily keeps the filters clean in between processes, while foot-actuated dustpans or direct bagging collection systems allow for easy, dust-free emptying, and reducing user exposure to contaminants



[www.ruwac.com](http://www.ruwac.com)



# airtec VISTAFLOOR®

## THE SMART TECHNOLOGY FOR SURFACE PREPARATION



### MILLING / PLANING

- RM-400 - 400mm working width
- Built for high production on concrete and asphalt
- Hydrostatic-drive



### GRINDING/REMOVING

- RM-320 - 320mm working width
- Successful grinding/planing of concrete and asphalt
- Large variety of cutters
- Self-propelled



### POLISHING

- BS-800 - 800mm working width
- Concrete surfaces
- Terrazzo, marble
- Unique patented planetary system



### SAFETY GROOVING / SURFACE CORRECTION

- SM-320 - 320mm working width
- Where cars, people, airplanes and animals go
- The diamond-drum concrete shaver



All equipment with dust collection systems!

**airtec** FOR SURFACE PREPARATION  
[www.airtec.ch](http://www.airtec.ch) - [info@airtec.ch](mailto:info@airtec.ch)

## Wacker Neuson at Conexpo 2017 – Taking A Look Into the Future

Conexpo 2017 fell on an anniversary year for Wacker Neuson. In 1957, the company began the production and marketing of construction equipment in the U.S. as its first foreign affiliate company.

"When Wacker Neuson looks into the future in North America, the company stands on a sturdy foundation of sixty years of experience and a profound market knowledge, which offers us enormous opportunities for growth," says Cem Peksaglam, CEO of the Wacker Neuson Group. "As the most important trade fair in our industry in North America, Conexpo offered us an excellent opportunity to look into the future with our customers, dealers, and partners. We were able to exhibit innovative solutions that make our customers' work on the construction site easier today, and in the future."

The focus of the trade show for Wacker Neuson was on the new line of skid steer loaders for the North American market. The four mid-frame skid steer loaders and two compact track loaders are powerful and versatile in use. In 2015, the skid steer loaders were introduced in North America. Since then they have also been designed, developed, and manufactured there.

Visitors to the Wacker Neuson stand were impressed by the action-packed demo shows and interactive stations. For example, they had the opportunity to participate in the "VDS Challenge" and convince themselves of the advantages of the Vertical Digging System (VDS). The system for Wacker Neuson compact excavators compensates for height differences in uneven ground conditions at the push of a button, providing more productivity and comfort.

A highlight at the show was the products of the zero-emission series. The line is making Wacker Neuson a pioneer in emission-free construction machines. In addition, the company exhibited the new excavators of the 6t to 10t class, as well as compact zero-tail swing excavators. Visitors could also familiarize themselves with the comprehensive portfolio of wheel loaders, tele wheel loaders, telehandlers, and dumpers.

[www.wackerneuson.com](http://www.wackerneuson.com)



# MB Crusher's Smallest Model Gets an Upgrade, Wins Challenge vs. Basalt

The theme of autonomy has always been a priority for many building companies. Being able to be independent in terms of fleet and operators allows for increased competitiveness in a sector in continuous evolution, that of recycling and construction. This means not having to hire equipment or depend on special skills brought in from outside the company, thus optimising costs and increasing competitiveness. These are exactly the positive features underlined by the owner, Mr Schuble, of the German demolition company Schuble Hoch- und Tiefbau GmbH in a recent interview.

"After having purchased a BF60.1 crusher bucket in September 2016, something finally changed. I began to think freely about my business, free to program my work and earn more," says Schuble.

"I was already aware of the advantages of MB in terms of cost reduction. Advantages resulting from the possibility to recycle

materials on-site without having to dispose of them in a dump, with the opportunity of selling the same materials as new aggregates for the building industry. We mainly deal with materials from demolitions, which we then re-use for other kinds of work, such as filling excavations or for road beds. However, I would never have imagined that such a small bucket [the BF60.1] added to my 12-ton Komatsu PC118 excavator would also allow for such highly efficient crushing of basalt. I am very satisfied with the reliability and productivity of this piece of equipment, just as I am satisfied with the after-sales service," says Schuble.

### The evolution of the species: the new Series 4 BF60.1

Suitable for heavy equipment from 8 tons upwards, MB's smallest model is now presented in the new Series 4 (S4) version - the fourth generation of crusher buckets. This is an updated and strengthened version,

both in terms of structure and in a number of important technical details. A restyling of the structural layout allows for more agile movement and increased speed during crushing operations, facilitating its use on the excavator. Other improvements include reinforcing of parts subject to particular stress; new options for regulation, widening the range of the dimension of the crushed material; and a new centralized greasing system that simplifies and speeds up on-site maintenance operations.

"A continuous challenge for improvement," is how Diego Azzolin, head of MB Crusher design and production, characterizes the latest innovations. "All our products undergo continuous testing and experimentation in order to improve them and render them more efficient in the various types of work sites that our clients deal with every day."

[www.mbc crusher.com](http://www.mbc crusher.com)



# Merit Expands Global Reach with Three, New International Distributors

Merit Engineering and Equipment Company is pleased to announce that Diamond Tools Technology of Canada, Alfer Diamant SL of Spain and Portugal, and Artizan Diamond Tools and Equipment of New Zealand are now authorized resellers of Merit equipment and parts. Diamond Tools Technology supplies the pro-cutter industry with quality-driven, innovative products, with offices and shipping locations in Montreal, Toronto and Calgary. The company continues to improve its offerings for the diverse Canadian geology.

Alfer Diamant SL emerged in 2007 with the goal of providing new solutions to clients

for cutting and drilling reinforced concrete. As pioneers in the introduction of installed diamond discs, Alfer Diamant adapted their components to offer a product that covers all cutting needs. They participate in the training and promotion of their sector through the workshops carried out by the Cutting and Drilling Association, as well as the training of the employees in the courses approved by the Labor Foundation.

Artizan Diamond Tools and Equipment began in 2003, originally as a small hydraulic core drilling supplier. After a short time, they saw the need in the market for specialized construction equipment and expanded to

provide a complete range of diamond tooling and associated equipment for all construction sectors. The New Zealand construction industry has been quick to recognize and embrace the quality Merit brand.

"Merit was founded as a small, family-operated business that prides itself on supplying the concrete cutting industry with best-in-class equipment," says Alexis Ferguson DiMarco, Merit's Director of Business Development. "As we grow and reach into new global markets, Merit will stay true to these values by seeking distribution partners that share our vision and core values."

[www.meritsaw.com](http://www.meritsaw.com)



The logo features a stylized globe with a grid of latitude and longitude lines. A crane hook is positioned at the top of the globe, as if lifting it. The globe is centered behind the text 'DEMCON'.

# **DEMCON** 2018

**September 27-28, 2018**  
**InfraCity, Stockholm,**  
**Sweden**

**[www.demcon.se](http://www.demcon.se)**

# NEW DEMOLITION EXCAVATORS: *Where Size Matters*

After a surge in activity last year with Bauma as the primary catalyst, 2017 is proving to be understandably quieter, as manufacturers turn their attention to the North American market at Conexpo. Andrei Bushmarin reports



## DEMOLITION-SPECIFIED MODELS

### Hyundai addresses the elephant in the room

The city zoo in Blackpool, the UK, is currently undergoing renovation. Part of the zoo, including the main entrance building, is made up of hangars dating back to the site's former use as an airfield. Following a safety inspection, the hangar adjacent to the main entrance building and Playbarn was deemed unsafe and earmarked for demolition. Manchester-based specialist contractor MCW Plant won the contract. The first phase of the project involved primary demolition of the hangar. It was performed using the company's new "jumbo" 30t Hyundai HX300 L excavator fitted with a Daemo DMS250 shear. To clear the debris from the torn down hangar, the contractor utilised a new 12.5t Hyundai R125LCR-9A equipped with a Daemo DMC140 pulveriser.

[www.hyundai.eu](http://www.hyundai.eu)

### Kobelco focuses on Europe

Kobelco Construction Machinery is arguably number one demolition excavator brand in Japan. Considering the cutthroat competition from such industry giants as Komatsu, Hitachi and Caterpillar, this is no mean feat. In Europe, however, its success has been modest so far. Unhappy with this situation, the company has made a point of turning the tables on its rivals there. Towards this goal, Kobelco Europe, based in Almere, Netherlands, is launching this year two new models tailored to the European market. Weighing in at 47t and 60t respectively, the SK400DLC-10 and SK550DLC-10 come equipped with the booms featuring Kobelco's patented "NEXT" joint system. This system ensures quick and safe assembling/dismantling of the boom and easy transportation of the machine. Boom assembly time is reduced to under 30 minutes compared to 2 hours required by previous-generation models. Two boom options are available for the new demolishers—a high-reach model, and one for ground level applications such as foundation demolition.

[www.kobelcocm-global.com](http://www.kobelcocm-global.com)

### Kocurek – a worldwide supplier of bespoke demolition solutions

Kocurek is a mid-size family-owned company based in Suf-





# Does Matter



folk, England. Despite its modest size, Kocurek is known and respected throughout the global demolition industry for its bespoke solutions. Unlike OEMs that build standard machines on a serial basis, Kocurek prefers to design and manufacture excavators attuned to a specific task. Many of the company's designs are therefore based on its customers' needs. Kocurek has been modifying excavators since the mid-90s, and by now over 600 units are operating in various corners of the world. Currently Kocurek offers its customers two basic lines of demolition equipment. The "high reach" line coming with non-telescopic booms varies from 22t base machine with 51 ft (15.5m) working pin height to 90t base machine with a 100 ft (30m) working pin height. The "ultra-high reach" model incorporating telescopic booms ranges from 50t base carrier with 111 ft (34m) working pin height up to 150t base machine with 230 ft (70m) working pin height. The most recent innovations from Kocurek (in production at the time of writing) are two 150t excavators featuring the company's highest to date 70m boom and a 90t machine equipped with a 164 ft (50m) boom.

[www.kocurek.com](http://www.kocurek.com)

## Two new high reachers from Volvo CE

Volvo's latest E-Series high reach models EC380EHR and EC480EHR have maximum pin heights of 76 ft (23.06m) and 92 ft (28.14m), respectively. Maximum tool weights are 6,614 lb (3,000kg) for the EC380EHR, 7,716 lb (3500kg) for its larger brother. Both machines come with a heavy duty, extendable undercarriage. Unlike other manufacturers, Volvo uses cylindrical sliding tubes for the extension; a design that prevents occurrence of pressure points not unusual in a sliding bar type design, thereby providing durability and longevity. The

machines can be fitted with either high-reach equipment or a standard boom and arm configuration, with switching between the two types made easy thanks to Volvo's patented hydraulic joint. The bigger EC480Ehr is also available with the patented Multi-Demolition (MD) boom to considerably expand its range of applicability. When fitted in the straight position with digging equipment, the MD boom allows using tools of up to 5.0t at a pin height of 52 ft (15.8m). When fitted in the bent position with digging equipment, the MD boom is capable of operating with a 5t tool and a pin depth of 56 ft (17m), which effectively transforms the machine into an underground demolition master.

A built-in dust suppression system, featuring a 30 lpm hydraulic lifting pump, eliminates the need for a separate solution. Four nozzles—two on each side of the arm—provide a fine mist that traps dust. It can also be used for cleaning the machine with a high-pressure water gun mounted behind the cabinets. Other options include boom and bucket cylinder protection, SIPS (Side Impact Protection System), and a reversible fan drive (see this issue's cover photo).

[www.volvoce.com](http://www.volvoce.com)

## NON-DEMOLITION MODELS

### Case extends D Series

CASE Construction Equipment has added a brand-new minimum-swing radius model to its D Series. Designed to provide increased digging and lifting power in confined work areas, the CX245D SR features a compact counterweight and modified boom placement to minimize the machine's footprint. Weighing in at 26t, the CX245D SR is powered by a 160 HP Tier 4 Final/Stage IV engine, offering more digging and





lift capacity compared to the previous model. Each D Series model is built to provide significant operational gains, including decreased cycle times, improved responsiveness and greater fuel efficiency. An electronically controlled hydraulic pump and larger control and solenoid valves increase lifting capacities and improve responsiveness. CASE D Series excavators now offer more features than any previous CASE crawler excavator such as an optional travel alarm and the oil sample ports for quick sampling of engine and hydraulic oils.

[www.casece.com](http://www.casece.com)

### Komatsu beefs up mid-range

Komatsu Europe International N.V. announced the launch of the new PC700LC?11 hydraulic excavator. With an operating weight of 67.5 to 69.5t, the PC700LC-11 is powered by a EU Stage IV emission compliant engine, boasting up to 6% increase in fuel efficiency on its predecessor. The engine features the Komatsu in-house aftertreatment system with AdBlue®, variable geometry turbocharger and exhaust gas recirculation valve. The excavator has three working modes to match a wide variety of applications. The ISO-certified cab is mounted on viscous isolation dampers to ensure low vibration levels. A seven-inch high-resolution coloured LCD monitor displays operational information in 33 languages. Komatsu's Equipment Management Monitoring System (EMMS) continuously monitors all critical points, enabling preventative maintenance, and provides troubleshooting assistance to minimize diagnosis and repair time.

[www.komatsu.eu](http://www.komatsu.eu)



Note: A review of mini and compact excavators, including several models introduced at Conexpo, will appear in the next issue of PDa.

**WE DARED TO  
DREAM BIGGER.  
WE JUST DID IT.**



**FR 200**  
Character of a different size.



[www.trevibenne.it](http://www.trevibenne.it)

CELEBRATE WITH US  
**25 YEARS**  
OF LEGENDARY SERVICE



# Finally the grinding and polishing machine that does it all on its own!

- Automatic grinding of the whole working surface
- Automatic planetary lifting with remote control
- Automatic swinging function
- Automatic reverse
- Automatic advancement
- Automatic overlap
- Great driving power
- Precision edge grinding
- Extreme maneuverability



VIDEO



**Klindex is the choice of top flooring professionals.**

Floor grinders • Dust extractors • Diamond tools • Burnishing machines • Chemicals • Floor Solutions



# Brokk Introduces Powerful 500 Demolition Machine

Brokk, the world's leading manufacturer of remote-controlled demolition robots, introduces the new Brokk 500, which features 40 percent more demolition power than the Brokk 400 as well as the Brokk SmartPower™ electrical system, a more powerful breaker, extended reach and industry-leading serviceability.

The new Brokk 500 adds 40% more breaking power than the Brokk 400. The machine delivers 1,086 lbft (1,472J) with each blow of the 1,510-lb (685kg) Atlas Copco SB 702 hydraulic breaker. It also adds more length to Brokk's signature three-part arm system, now reaching 24.3 ft (7.4m) vertically, and 23 ft (7m) horizontally, making it ideal for work where extra reach is important.

## Still Compact and Smart

Still, the Brokk 500 retains most of the compact proportions of the Brokk 400. Weighing 11,464 lb (5,200kg), it is only slightly heavier, and the width of the machine is the same. It also is "backward compatible," so all the tools and attachments used for the Brokk 400 can also be used on the new Brokk 500. The Brokk 500 comes with Brokk's new intelligent electrical system, Brokk SmartPower, which is a key part in creating the machine's performance improvement. It maximizes the power output of the machine at any given time based on both environmental and operating factors. The Brokk SmartPower system is uniquely designed for the extremely tough operating environments of

a demolition robot. Its components are either designed by or modified by Brokk to withstand the demolition forces over time. In addition, it helps the operator start the machine on a poor power supply while at the same time it protects the Brokk machine from any harmful faulty power.

## Very Easy Maintenance

The Brokk 500 incorporates the industry-leading reliability and serviceability that Brokk has become known for over the years. New on this machine is that operators can complete all daily and weekly maintenance without having to lift the covers of the machine.

Replacing any damaged hydraulic hoses is now simpler than ever. Add other items, such as the strengthened new Brokk machine design, the reinforced casted details, and the new headlight protections, and the result is a machine truly hardened for the tough Brokk environment. The Brokk 500 will be available beginning May 2017.

[www.brokk.com](http://www.brokk.com)

The new Brokk 500 delivers 1,086 lbft (1,472J) with each blow of the 1,510-lb (685kg) Atlas Copco SB 702 hydraulic breaker. On top of that, it adds length to Brokk's signature three-part arm system, which now extends 24.3 ft (7.4m) vertically and 23 ft (7m) horizontally.



Brokk introduces the new Brokk 500, which features 40% more demolition power than the Brokk 400 as well as the Brokk SmartPower™ electrical system, a more powerful breaker, extended reach, and industry-leading serviceability.

The new Brokk 500 incorporates the industry-leading reliability and serviceability that Brokk has become known for over the years. New on this machine is that operators can complete all daily and weekly maintenance without having to lift the covers of the machine. Plus, replacing any damaged hydraulic hoses is now simpler than ever.

# ZENESIS®

WORLD'S MOST ADVANCED  
PATTERNED DIAMOND TECHNOLOGY



WALL SAW BLADE



FLOOR SAW BLADE

*New*  
**edition R**



CORE BIT

## IROCK Releases Closed-Circuit Impact Crusher with Small Footprint, High Productivity



IROCK Crushers introduces its TC-15CC tracked closed-circuit crushing plant, ideal for small to medium contractors. The TC-15CC can process a variety of soft to medium hardness materials, such as concrete, gravel, rock, and sand to produce uniform, cubical product. IROCK's hydraulically adjustable aprons are remote controlled and provide optimal management over material sizing. The remote-controlled apron release and the unit's large crusher opening allow the operator to remove material blockages from the machine's cab, which means less downtime and more productivity.

The track crusher features a fixed, Har-dox® hopper with fold-up wings to deliver a 15-yd<sup>3</sup> (11.5m<sup>3</sup>) capacity. It is paired with a 40-in (1,016mm) vibrating grizzly feeder, which has 3/4-in (19mm) AR 400 liners on the pan and sidewalls. Producers can set up the TC-15CC to produce as many as four products or just one for optimal productivity. The 60-ft<sup>2</sup> (5.6m<sup>2</sup>) heavy-duty, high-energy screen works with two side-transfer conveyor belts for producing the multiple products. Users can simply rotate the return conveyor out to make the fourth product or keep it in place to return the oversize to the crusher to be re-crushed.

The boosted efficiency equates to greater production in less time, reduced labor costs, less fuel consumption and lower operation expenses. This feature is ideal for applications such as asphalt recycling, where contractors commonly need a consistent half-inch product. The return conveyor is mounted on a hydraulic swivel, allowing producers to use the conveyor for stacking material as high as 16 feet (4.9m).

The TC-15CC also features a double deck pre-screen that incorporates heavy-duty grizzly bars on top and screen media on the bottom. The screen media removes fine material before it enters the impactor and routes the material through the unit's bypass chute. With this chute, fines that fall through the

grizzly feeder can either bypass the crusher and mix back in with the crushed material or be removed via the dirt conveyor by making a simple adjustment to the flop gate.

IROCK designed the closed-circuit plant with a four-bar rotor that provides maximum production. Producers can remove the blow bars, then flip and re-install them for a second lifecycle. The TC-15CC incorporates IROCK's exclusive ROCK BOX, an innovative alternative to discharge chutes found on similar units. The ROCK BOX uses a shelf system with abrasion-resistant wear bars that allow crushed material to build up. This material acts as a wear liner, which cuts down on costly labor and replacing wear parts.

As material exits the impactor, it moves over the unit's vibratory pan feeder. This reduces the risk of ripping a belt when running recycled materials that may contain rebar. The pan feeder directs material onto a 48-in (1,219mm) wide screen feed conveyor, allowing for maximum production from the crusher. The discharge conveyor can be hydraulically raised or lowered for easy maintenance.

The TC-15CC is highly portable, with 20-in (508mm) track pads for easy maneuverability around a site or onto a trailer for transportation to other locations. IROCK designed the TC-15CC's screen box as a modular unit so it can be quickly detached for transportation. The unit comes standard with a wireless remote control that operates the plant and tracking system, while a user-friendly operator station controls the CAT® power unit as well as all crusher startup and shutdown functions. Manual hydraulic control valves manage the set-up functions.

To reduce cleaning and control dust, the TC-15CC features a standard dust-suppression system while catwalks provide convenient access to crucial maintenance and cleaning points.

[www.irockcrushers.com](http://www.irockcrushers.com)

## New GDT 390 Razer from Genesis Attachments for the Biggest Jobs

Genesis Attachments announces its new GDT 390 Razer demolition tool, expanding the product family to three models to meet any project need. The GDT 390, the largest of the Razer trio, features a 46-in (1,168mm) jaw opening and 45-in (1,143mm) jaw depth for processing thick concrete and rebar. With a 10.5-foot (3.2m) reach, it fits 45t standard and high-reach excavators. Like the GDT 190 and 290, the GDT 390 features a lighter-weight design and a short, flat-top head with bolt-on bracket for easy installation and switching the tool between excavators.

The number of crushing teeth and their locations can be customized to meet project needs. The easy-to-install, bolt-on teeth can be interchanged and reversed front to back for longer life and lower cost of operation and ownership. The four-way indexable metal cutting blades in the back of the jaw feature an apex design that draws material deeper into the jaw for more efficient cutting, and to further improve productivity and reliability, the pass-through lower jaw prevents material build-up and jamming.

[www.genesisattachments.com](http://www.genesisattachments.com)



## Pulse Technology™ - The First Attachment Performance Monitoring System

Genesis Attachments announces Pulse Technology™, the first-of-its-kind, cloud-based attachment performance monitoring system. Using integrated sensors throughout both hydraulic circuits, Pulse Technology™ delivers live diagnostic measurements for critical functions including jaw pressure, jaw circuit oil temperature, bi-directional rotation pressure, rotation circuit oil temperature, and rotational speed and flow.

"True" attachment life operations are also monitored, with data for hours, cycles, rotations, and elapsed run time, eliminating

the need to rely on traditional carrier-based hour measurements and improving maintenance scheduling. The web and mobile app platform displays live and historical data. Performance threshold alerts, delivered via e-mail or text, can be set to prevent hydraulic failures. Data can also be exported for detailed performance charting and analysis. Multiple Genesis attachments can easily be monitored with Pulse Technology™, as the software displays an icon for every attachment, and its exact location, when the attachment is in use.

[www.genesisattachments.com](http://www.genesisattachments.com)



# GET MORE DONE

## **Industry leading performance.**

Our power cutter solutions cut more than just concrete, they also make quick work of natural rock, hardscape, stone, dry stack, masonry, brick — pretty much any hard surface.

- *Square corners with no overcuts*
- *Precise openings of all shapes and sizes*
- *Egress window*
- *Deep plunge cuts (up to 25"\*)*
- *Landscape and hardscape jobs*
- *Confined spaces*

**Available in gas, hydraulic  
and pneumatic power**

---

**CALL TO ORDER: 800.321.1240**  
**EMAIL: [orders@icsdiamondtools.com](mailto:orders@icsdiamondtools.com)**

---

\*25" with the hydraulic or pneumatic powered cutters.  
© 2017 ICS | Blount Inc. Pricing and specifications subject to change without notice.



**Diamond Tools and Equipment**



**[icsdiamondtools.com](http://icsdiamondtools.com)**

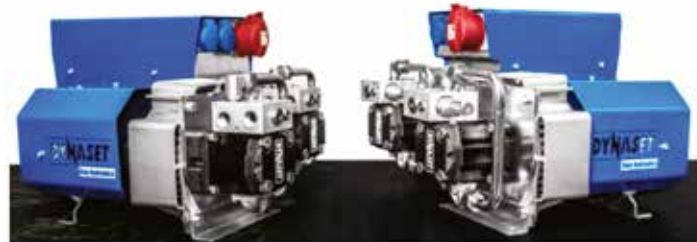
### New Quick Coupler for Bobcat E25 to E55 Excavators

Doosan Bobcat has extended its excavator quick coupler offering with the launch of a new hydraulic pin grabber coupler for attachments used on the seven Bobcat compact excavators from the E25 up to the E55 models. Key features and benefits of the new quick coupler include its triple lock design for greater safety, exceeding the ISO 13031 norm. There is a wide variable pin center, to pick up multiple pin-on attachments. A robust, yet compact design ensures maximum breakout force and the system is essentially maintenance-free, with few components for peace of mind. Powerful springs are activated in case of pressure loss to avoid any risk and reversibility is standard when the job requires it. Important aspects include the increased safety and compliance offered by a hydraulic pin grab coupler, which enables the operator to rapidly and safely change between non-hydraulic attachments from the comfort of the cab. The pins in the system are under constant pressure from the hydraulic cylinder ensuring the attachment is tightly gripped, even when there has been pin wear over longer term use. In the unlikely event of a hydraulic cylinder failure or hydraulic pressure loss, the attachment will remain securely connected thanks to two powerful springs. Front and rear locks ensure the attachment remains in position at all times.

The operator can change non-hydraulic attachments without leaving the seat. The operator simply activates two switches in the correct sequence, followed by moving the bucket joystick. The proven and tested design has no greasing requirements, and very few moving parts with no maintenance requirements (other than the daily inspection), guaranteeing a hassle-free coupler. The open and simple design is meant to work in mud, and is manufactured using extra-high-strength steel, increasing durability while optimizing weight and performance.



# New Silent Hydraulic Motors Integrated in Dynaset Products



Dynaset presents new silent hydraulic motors which are integrated in a vast range of company's products. The new hydraulic motors will improve the products in many ways. The most noticeable change is the drastically improved sound. For example the HG 12kVA Hydraulic Generator's sound pressure level at 3 ft (1m) dropped from 91 dB to 83 dB. This means the sound level is significantly lower.

Operators are also familiar with high-pitch sounds that are unpleasant for the human ear, and big amplitudes tend to hurt the ears. The new Dynaset silent hydraulic motors are designed to produce sound which structure and frequency are more subtle for the ears. Therefore, the motors sound very quiet. The better sound characteristics drastically improve the working environment and user ergonomics.

The silent hydraulic motors are designed to be more efficient and durable. The new Dynaset motors have less mechanical friction, resulting better efficiency and increasing durability. The operating temperature is lower as well. The new shaft

seal is made for higher pressure endurance. The new silent motors are easy to recognize from the all-black motors with Dynaset logo on them.

The DYNASET silent hydraulic motors are integrated in:

- HG Hydraulic Generator (Standard models 3,5 kVA – 20 kVA, except high-pressure models)
- HGV POWER BOX Variable Hydraulic Generator System (Standard models 3,5 kVA – 20 kVA)
- HGV Variable Hydraulic Generator System (Standard models 3,5 kVA – 20 kVA)
- HWG Hydraulic Welding Generator (Standard models of K series, except portable models)
- HKR Hydraulic Screw Compressors (All standard models)
- HMG Pro Hydraulic Magnet Generator (All standard models)
- HMAG Hydraulic Magnets (All standard models)

[www.dynaset.com](http://www.dynaset.com)

### Talbert Manufacturing Introduces 55-Ton Extendable Trailer

Talbert Manufacturing introduces its 55SA-TELE heavy-haul trailer. The deck length of this innovative unit is 54 ft (16.5m) when open, allowing users to haul a wide range of large equipment. Operators can then retract the trailer to 32.5 ft (9.9m), shortening the overall length to 53 ft (16.1m). Talbert designed the 55SA-TELE with a 90-in (2,286mm) swing radius that can be extended to 114 in (2,896mm) with the use of a gooseneck extension.

Users can set up the trailer as a four-axle close coupled, 2 + 2 spread axle or 3 + 1 spread axle configuration. The third and fourth axles can be flipped or removed, plus a 24-in (610mm) pinned and hinged gooseneck extension can also be flipped. The unit features a 29-ft (8.8m) wood deck in the front, and a 3-ft (1m) Apitong platform in the rear with beams stretching between. The trailer expands and locks in 4-ft (1.2m) increments. The 55SA-TELE also is equipped with Talbert's ENitro nitrogen assisted dampening system, a safe and stable platform that virtually eliminates bridging of the spreader, which can occur if an entire load rides on the rearmost axle. The system's nitrogen accumulator oscillates around a central self-tracking pivot point to provide proportional weight distribution in each axle grouping. It sets the axle load capacity and keeps it there as the system equalizes up and down articulation.



## Rockster at Conexpo 2017

Since 2011, Rockster has been part of the triennial expo focusing on the American construction industries. The great highlight of Conexpo 2017 was the presentation of the new R1000S impact crusher. The feedback was great because of the technical features. "New dimensions in the mobile crushing technology," was the first statement of many customers. This year CONEXPO attracted over 140,000 visitors and 2,500 exhibitors from all over the world but with not such a high attendance of South America than the years before. The event has been a great occasion to present Rockster's innovations to all its booth visitors.

**Mr. Kormann, CEO of Rockster, explains the highlights of the R1000S.**





# G3



**ARIX Generation 3**

Advanced multi-layered diamond segments  
with precise distribution of diamond particles

THREE GENERATIONS BEYOND

## TURN YOUR DREAMS INTO REALITY

Meet the third innovation of the original diamond array technology that changed the industry in 2005. ARIX G3, superior performance you can see and feel.



# Great Success for the Aquajet Hydrodemolition Days 2017

**Aquajet Systems, now owned by Brokk AB, has really put hydrodemolition on the global demolition map. The manufacturer has proved that hydrodemolition is a demolition method not just meant for specialized hydrodemolition contractors, but also firms working with concrete cutting and general demolition.**

Hydrodemolition is an alternative method that is useful when other methods don't fit the specifications. With Aquajet's latest developments the hydrodemolition method has also become more exact and accurate.

## 100 people from 22 nations

Every year Aquajet Systems invites its clients and agents around the globe to Hydrodemolition Days in Holsbybrunn in the south of Sweden. This year, the meeting took place April 5-6, attracting nearly 100 people from 22 different nations. The two days contained product presentations and demonstrations, and a tour of Aquajet manufacturing facilities. Attending were also quite a number of representatives from the new owner, Brokk AB, in Skellefteå and the US subsidiary Brokk Inc in Monroe, Wa. The US market is believed to show a strong growth for Aquajet with help from the Brokk organization.

Day 1 began with a welcoming address and presentation from Aquajet Systems managing director Roger Simonsson. Aquajet Chief Engineer Ronnie Hilmersson also spoke about the latest developments.

Later in the day the Canadian hydrodemolition contractor David Porciello from Cor-Blast spoke on hydrodemolition from a contractor's perspective. The day continued with live demonstrations of the new Aqua Cutter 710V v 2.0, EcoSilence Power Pack EcoSilence, and the Aqua Cutter 410A v 2.0 water filtration system with a UHP Power Pack. Andrew Birt from the US company StoneAge demonstrated their industrial cleaning equipment, and Swedish company TST Sweden AB presented their safety equipment. In the evening a dinner was held at a countryside restaurant called Wallby Säteri. Musicians and comedians Stefan and Kim entertained the audience. Next day a summary was held including additional demonstrations and meetings.

## The new EcoClear system

Water filtration has become a very big issue lately with stronger regulations how to treat water in construction environment before it is let back to the nature. The Aquajet EcoClear water treatment system is a state-of-the-art solution dedicated for filtering Hydrodemolition water on a completely new level.

EcoClear enables the operator to safely discharge water back into the environment – without the need of



**Aquajet System Managing Director Roger Simonsson and the company's CFO Marianne Hilmersson.**

an extra water reservoir, without the use of filters of any kind – and without pollution. EcoClear is designed to work perfectly with the range of AQUA CUTTER robots. It's capable of handling an impressive flow rate up to 706 ft<sup>3</sup> (20m<sup>3</sup>) per hour. With EcoClear the contractor can neutralize elevated alkaline pH levels down to pH 6-9 while the operator has full control of the turbidity level down to 20-25 mg particles/l.

In addition, the contractor can do all this without any kinds of filters or an extra water reservoir. Perfect for the hydrodemolition operation, amazing for the environment. EcoClear is powered by Slitbuster Ltd., and consists of a number of water treatment chambers.

To make this piece of water wonder work, EcoClear

# the condition



Picture above and to the left showing the new Aquajet System water filtration system that was demonstrated at the Aquajet Hydrodemolition Days and attracted the visitors attention a lot.



From the right Stefan Hilmersson, founder and former owner of Aquajet Systems with Brokk CEO Martin Krupicka.



From the left Brokk CEO Martin Krupicka and Dennis Hilmersson from Aquajet Systems.



To the left Brokk Inc, VP Sales and Marketing Peter Bigwood in talks with a distributor.

uses flocculation technology to remove the maximum amount of sludge from the water. The treatment unit is operator friendly, allowing the operator to take care of all particle sizes and weights. The whole process is easily monitored online and with the RECO control system. EcoClear is truly a unique system on the water treatment market. The participants at the Hydrodemolition Days really showed a great interest for the new system from Aquajet.

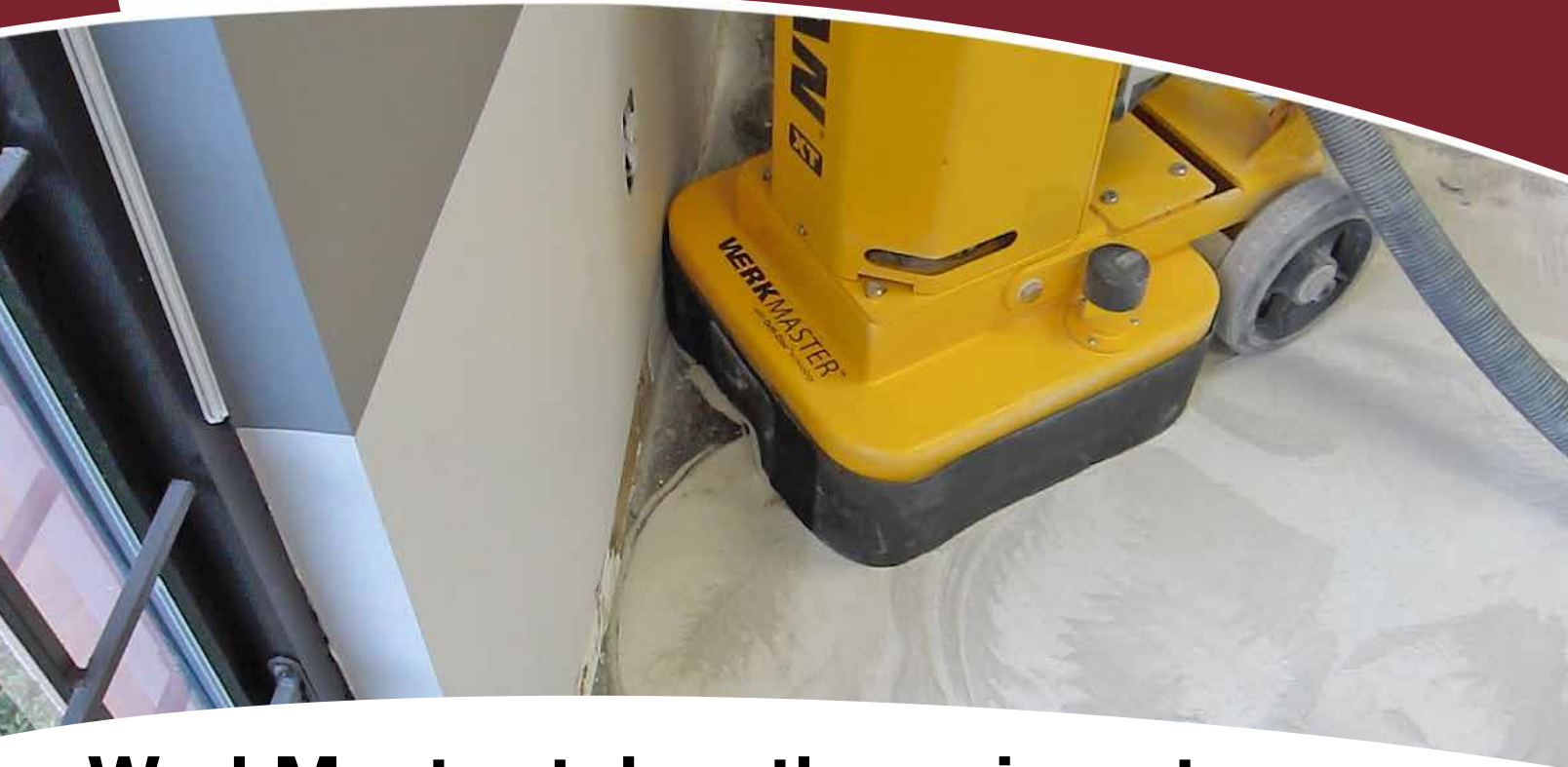
[www.aquajet.se](http://www.aquajet.se)



# WERKMASTER™

Ultra Floor Systems & Solutions

## Taking it to the Wall!



## WerkMaster takes the pain out of your #1 Pain Point - Edging

*WerkMaster are the ONLY machines that will grind & polish up to 1/8" (3mm) to the walls. This gives you an Edge over your competitors with:*

- ✓ Reduced job costs - by up to 40%
- ✓ Eliminating the need to have an additional edging machine
- ✓ Reduced worker fatigue by keeping them off their knees
- ✓ Superior finish due to a consistent Edge to Edge scratch pattern



Scarb  
by WerkMaster



Termite  
by WerkMaster



VIPER  
by WerkMaster



raptor  
by WerkMaster



TITAN  
XT  
by WerkMaster



TITAN  
Propane  
by WerkMaster



COLOSSUS  
XT  
by WerkMaster



COLOSSUS  
Propane  
by WerkMaster



[www.werkmaster.com](http://www.werkmaster.com)

# EGUN

## C-130G Floor Saw

Strong power of 130hp. Equipped with Caterpillar uneven floor efficiency. Cutting depth up to 700mm.



### Egun floor sawing robot R-140T, 3 types

- Cutting depth up to 500mm
- Cutting depth up to 800mm
- Cutting depth up to 1100mm



## G-90C

Smaller and stronger. New updated G-90C wires saw which is the representative Wire Saw of Korea. In the new updated style the powerful force remains unchanged, while the physical dimensions has become smaller and more convenient for operation.



Independent pulley. Can be attached/detached to all equipments.

**EGUN** EGUN CO., LTD  
 egun@egunsystem.co.kr  
 Phone: +82.31.766.7391  
 www.egunsystem.com  
 www.egunsystem.co.kr

*"Egun Style"  
 Made in Korea*



## Atlas Copco's New MB 1650 Breaker: Lower Weight, Same High Performance

An ongoing aim for Atlas Copco is to help customers reduce their operating costs, and the new MB 1650 hydraulic breaker is a typical example. Replacing the MB 1700, the MB 1650 is lighter and more compact yet gives the same high performance as its predecessor. The new design offers higher reliability, lower repair costs and easier accessibility for maintenance. Weighing in at 3,638 lb (1,650kg), the new MB 1650 hydraulic breaker is suitable for carriers in the 19t -32t weight class. A redesigned service window offers greater accessibility and thus makes the attachment more maintenance friendly. With no high-pressure accumulator the MB 1650's maintenance and repair costs are lower. Breaker performance is optimized by AutoControl, an automatic piston stroke length switching system, which adjusts the output balance between impact energy and rate during operation. Atlas Copco's EnergyRecovery feature automatically utilizes the piston recoil energy to increase the performance, without additional hydraulic input, and to lower vibrations. The integrated StartSelect valve enables the operator to adjust the hydraulic breaker start-up behavior according to the operating condition in a few simple steps.

The MB 1650 is equipped with ContiLube™ II, a self-bleeding automatic lubrication device for optimized grease

consumption and continuous lubrication. Noise and vibration levels on the MB 1650 are minimized by the VibroSilenced Plus system, utilizing non-metallic suspension arrangements to isolate the percussion mechanism from the breaker box and sealing all openings for lower noise and vibration levels. An optional, patented dust sealing system called DustProtector II will extend the service life of the components and reduce grease consumption. The built-in check valve reduces dust intake into the tool guiding area and the percussion chamber. The new MB 1650 hydraulic breaker is an efficient choice for a broad spectrum of applications in mining and quarrying, demolition and renovation, construction, and the metallurgical industry.

[www.atlascopco.com](http://www.atlascopco.com)



## Streamlined Genesis Handling Grapple Reduces Maintenance

Genesis Attachments announces its new Handling Grapple, GHG, designed with streamlined features that require less maintenance. The GHG 125 contains a single, oversized cylinder with dual drag links that minimizes the number of moving parts, simplifying the hydraulic system and reducing maintenance. Easy-to-locate grease fittings in the streamlined tine, frame and linkage design also decrease downtime.

Designed for waste handling and recycling, C&D material handling and sort-

ing, and primary demolition applications, the GHG is available with perforated or heavy-duty ribbed tines that close at a very flat angle to assist in compacting material. Maximum crushing force densifies material while the strong rotation system resists back-driving forces.

Large recessed side covers provide easy access to internal components while protecting the cover fasteners, and small openings in the lower housing prevent material from accumulating inside the grapple.

[www.genesisattachments.com](http://www.genesisattachments.com)



# Pentrunder's new HFi System Launched

Breaking news from Pentrunder was announced at the German concrete cutting show in March. The manufacturer is planning to launch a new generation of high cycle equipment in the end of the year.

Pentrunder introduced the modular HFi system at the recent Bebossa show in Willingen, Germany, in March. The HFi system is the next generation HF system to build on for the future. Its advantages include low weight of each machine, modularity, and built-in electrical safety features.

The new HFi system is planned for market introduction at the end of 2017. Also new is the Pentrunder RS2 wall saw, which has an integrated high power motor and weighs 51 lb (23kg). This was shown alongside the new MDU3 core drill with 10kW output power that takes a maximum drill bit of 1m. It weighs 29 lb (13kg) and an integrated intelligent automatic feed will add 3.3 lb (1.5kg) to the core drill. A small, lightweight Pentpak will drive the wall saw and core drill, as well as a chain saw and other handheld machines. More info about this in coming issues of PDa.

[www.pentrunder.com](http://www.pentrunder.com)



# Hands-On

It might seem to many mothers that all 10-year old boys try to wreck their houses, but for Texan Lloyd Nabors he really did – starting a lifelong love of demotion, assisted with his loyal gang of Volvo machines.



Lloyd Nabors – a lifetime in demolition.

It's fair to say that Lloyd Nabors likes to tear things down. A lot. He was a young boy when he was first inspired to start his own demolition company. His father did demolition work, and young Lloyd often helped out, starting around the age of eight. Helping dad was one thing, but what he really wanted was to work on his own. As Nabors recalls, "I said, 'Dad, I want to run a piece of equipment by myself.'" His father replied that when Nabors turned

10 years old, he'd be allowed to wreck his first house. "So, he turned me loose," Nabors says. "I was running a wheeled loader and I got to wreck my first building when I was 10 years old. And I just loved it."

Many years later, Nabors is the president of Lloyd D. Nabors Demolition, headquartered in Hutchins, Texas, just south of Dallas. Projects have so far taken him across Texas and into neighboring states, including Louisiana,

Arkansas and Oklahoma. Nabors is still very hands-on with his machines.

### Some friendly advice

Nabors says he was committed to the brand of machines he worked on as a boy. He first invested in Volvo construction equipment 12 years ago, after talking with a friend in the excavation business. "He said, 'You need to try



fleet of Volvo demolition excavators has helped develop Lloyd D. Nabors Demolition into a leading specialist.



# Demolition

these Volvos, they're good machines," Nabors says. "He said his savings on fuel were tremendous. So, I decided to give a shot, and we bought one."

Now, Nabors commands a fleet of close to 20 Volvo excavators, including a Volvo EC460 high-reach excavator. Dealer sales representative Jarred Walker of Romco Equipment recommended the high-reach machine to meet Nabors' wide-ranging job requirements. Walker says Nabors was a pioneer. "He was the first contractor in the state of Texas to buy the high reach," Walker says.

The machine's flexibility was a strong selling point. With a modular joint system, the extended-reach arm can be exchanged for a digging boom as required.

"They've got it down to about a 45-minute process to do that, with one person," Walker adds. "That's a big deal because the old way would take two days to take the long arm off the machine. The versatility is amazing. The machine has paid for itself many times over. It allows them to go do jobs that they weren't able to do before."

## Out of harm's way

In addition to the high-reach excavator's flexibility, Nabors says he appreciates its safety features. "Our long-reach excavator helps us when we have a structure that is six or seven stories tall," he says. "It keeps our operator a safe distance away. We're able to reach up and demolish a

building, and we can keep away from the structure when it's falling." The high-reach arm can take a shear or a hammer. This helps operators keep the job under control.

"We reach up there and cut the columns. We're able to pull them down and it's very professional," Nabors says. "We used to use a wrecking ball, and it wasn't really controllable. You'd just knock a building down, and wherever it fell, it fell. We're able to control our demo much better now."

V.P. Satterwhite agrees that safety and professionalism are core concerns. "Texas happens to be a state where you don't need a license to perform demolition," Satterwhite explains. "So, you might get a few more cowboys who may have a pick-up truck and a sledge hammer and they're gonna go tear down an apartment complex. Our job is to make buildings come down, and we want to make sure we're doing it in a safe manner. We want everybody to leave the same way they came that morning."

Citing Volvo CE's demolition package, which includes safety guards over the cab front. "It protects the equipment but, more importantly, it protects the person sitting inside the cab," Satterwhite says. "If a piece of rebar comes flying out, you don't know if it will go left or right or straight up. Those guards have been phenomenal for us."

The business of knocking down buildings includes



The company operates a fleet of close to 20 Volvo excavators.

many challenges that outsiders may not consider. Nabors uses drone cameras to help analyze each job site. Satterwhite says, complications take many forms.

"You don't know how a building may react all the time, especially if it's old or burnt or wind damaged from tornadoes," he says. "We operate with the understanding that anything can happen." Satterwhite describes the open site where Nabors recently imploded an old football stadium.

"I enjoy seeing a blank piece of ground when we're all done and it's clean and there's grass growing on it," he says. "That's something we take pride in. Now that's set up for someone to do something great. We create a place where somebody can build something new."

## ▶ ANTRAQUIP<sup>®</sup> CORP

**Experienced, Innovative & Reliable**

### HIGH PERFORMANCE, DELIVERED

CONCRETE GRINDER ATTACHMENTS



DIAMOND & CARBIDE DEMOLITION SAWS





Proudly Made in the USA

WWW.ANTRAQUIP.NET



INFO@ANTRAQUIP.NET

TEL: +1 301.665.1165

## THE ULTIMATE DEMOLITION CONTRACTOR'S ATTACHMENT

CONTROLLED DEMOLITION • REINFORCED CONCRETE CUTTING • MAKING THE AQ DEMOLITION SERIES THE ULTIMATE ATTACHMENT

## Innovative Four-Blade Genesis Rail Breaker Reduces Jaw Wear

Genesis Attachments announces its new Rail Breaker, GRB 30, featuring an innovative four-blade design that reduces jaw wear and maintenance. Featuring cutting blades on each side of the upper and lower jaws, the GRB 30 minimizes parent material wear, extending jaw life and reducing the need for build-up. A deeper jaw design provides increased bearing life and reduces pivot stress by keeping the cutting area in the center of the blades, away from the throat.

Designed to operate up to 5,000 psi (345 bar), the GRB's large-bore cylinder

produces more power for improved cutting. Built-in accumulators reduce hydraulic system shock loading and increase cylinder life. Dual direct-drive motors with a built-in case drain system provide superior rotation control and holding power. Built to perform, the Genesis Rail Breaker features a heavy-duty main-shaft pivot group designed to withstand continuous rail cutting. The large 9.75-in (248mm) jaw opening and 13.25-in (336mm) jaw depth enable the processing of a variety of rail sizes.

[www.genesisattachments.com](http://www.genesisattachments.com)



## SRX-150 Green Cut Early Entry Saw

MK Diamond Products introduces the new SRX-150 Green Cut Early Entry Saw. Compact and lightweight, the SRX-150 is engineered for early entry sawing of crack control joints within one to two hours of concrete finishing. It is perfect for use on driveways, parking lots and residential projects. "The importance of cutting control joints is you prevent random cracking caused by internal stresses that develop during the curing process," says Brian Delahaut, Vice President MK Diamond Products, Inc. "These con-

saw's blade capacity is 6.375 in (162mm) and provides a cut depth of 1.125 in (28.575mm). The SRX-150 has an upcut blade rotation, which facilitates in keeping debris out of the joint. The anti-spall skid plate aids in keeping the edge of the joint smooth. The blade shaft has self-aligning bearings for low maintenance. The blade guard features a 2-in (50.1mm) vacuum port for easy connection to dust control systems. The SRX-150 has an easily removed blade guard cover providing quick access for blade changes and inspection. There is a mounted throttle, raise lock release lever and engine stop switch on the handlebar for quick operator access. The folding handle bar and retractable pointer arm make the saw compact for storage and the lifting point provides easy transport. The 3-in (76.2mm) polyurethane wheels are non-marking. MK

traction joints, at predetermined locations, create weakened planes where the concrete can crack underneath the cut, but appear as a straight line on the top of the slab."

The SRX-150 saw comes with a Honda GX 160 Cyclone Air Filtration engine or a Kohler CH255 engine. The

## OilQuick Warns of False Products

Hydraulic quick coupling system manufacturer OilQuick is warning customers that unauthorized copies of its products are being marketed by Swedish tilt rotator and work tool manufacturer Steelwrist AB. In a statement, OilQuick ECO Henrik Sonerud claims that an April 26, 2017, press release from Steelwrist falsely suggests that the products are being manufactured and distributed "in total agreement with OilQuick." Sonerud says no such agreement exists. According to Sonerud, Steelwrist intends to sell the products under the OQ brand with the designations OQ-60, OQ-70 etc. "OQ is an extension of the designations for our products that has been in use for over 20 years," Sonerud says, "and is closely linked to OilQuick products and their good reputation on the market." Steelwrist's use of the OQ designation in product names and marketing, he adds, "is a clear case of brand infringement," and legal action is planned.

Another area of concern is Steelwrist's claim that the product copies are fully compatible with the OilQuick system. Sonerud counters that the claim does not take into account the fact that OilQuick systems are available in various different coupling configurations, depending on the market, application and customer's requirements. OilQuick and local distributors can therefore supply custom versions with certain adaptations to ensure smooth operation in special situations.

"If copies of quick couplers and tool adapters are used together with original OilQuick products, we see a great risk of premature wear, defective function and mechanical faults," Sonerud says. "Such situations could cause considerable damage and injury to people."

He goes on to say that if a genuine OilQuick system is used with non-original components, the company cannot assume full responsibility concerning function or any possible warranty claims.

Diamond offers a full line of Early Entry Green Concrete diamond blades. The GC line of blades includes five blades that are engineered for the type of aggregate used in the concrete. They range from ultra hard aggregate to medium/soft aggregate, and have a triangular shaped arbor.

[www.mkdiamond.com](http://www.mkdiamond.com)



"Under our terms and conditions, our warranty only applies if the OilQuick system consists solely of original OilQuick parts," Sonerud says. "This would not be the case here."

## Meet Bella, Klindex's New Floor Polisher

Bella is the innovative multifunction single-disc machine from Klindex America. Available with motors from 1,300 Watts to 2,900 Watts (plus a speed controller in the VS version), Bella is ideal for cleaning, treatment, grinding and polishing of any surface. Bella features all the interchangeable accessories to tackle any construction site challenge. It includes an ergonomically designed, adjustable handle with hand protection, sturdy frame, a reinforced handle rod shockproof and scratch-proof polyurethane casing, and a built-in dust vacuum hood. Bella also features the unique K4 planetary system, and long-operating time thanks to an 18-liter water tank. autonomy of water thanks to the 4.7-gallon (18-liter) water tank. Options include a power outlet for accessories, and LED lamp for working in low-light environment.

[www.klindex.com](http://www.klindex.com)



**One power source.  
Many tools.  
Get more done.**

***Pentrunder***<sup>®</sup>  
**CONCRETE CUTTING SYSTEMS**



3P8 HF Wire Saw



CBK HF Wall Saw



CW630 HF Chain Saw

Pentpak 427



6-10 HF Wall Saw



8-20 HF Wall Saw

PARTS & SYSTEMS STOCKED IN ARIZONA  
FOR IMMEDIATE SHIPPING.

**CALL TO ORDER  
800.321.1240**



RIGATÔ SHUKRAN GRAZZI HVALA EYXAPICT  
NGIYABONGA CHOUKRANE KOP KHUN GRAZIA  
TAK TAKK  
CИБO XIÈ  
KITOS  
감사합니다 GRAZIE DANKE TĀNAN  
DZIĘKUJĘ MERCI TACK KÖSZÖNÖM CHEE  
MAHALO



The  
Industry  
Choice



DURATIQ™, the latest floor grinding machine series from HTC, won the award "Most Innovative Product" in the category "Industry choice". The MIP award program is arranged in conjunction with the World of Concrete show in Las Vegas and the category "Industry Choice" is based on the votes from the industry users. This award validates once again that the DURATIQ™ series from HTC have created a whole new standard and meet the real-life expectations in the industry.

Thank you all who voted for DURATIQ™!



[www.duratiq.com](http://www.duratiq.com)

**DURATIQ™**